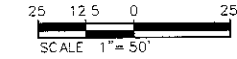




DREAM DESIGN INTERNATIONAL, INC.
PROFESSIONAL STRUCTURAL & CIVIL ENGINEERING CONSULTANTS
528 KANSAS CITY ST., SUITE 4, RAPID CITY, SD 57701
PH. 605-348-0538 FAX. 605-348-0545 EMAIL: engineers@dreamdesigninc.com

INTERSTATE 90



RECEIVED

APR 12 2007

Rapid City Growth Management Department

SECTION 29
SECTION 28

LOT H-2 OF A

DYESS AVENUE

20.00' UTILITY EASEMENT

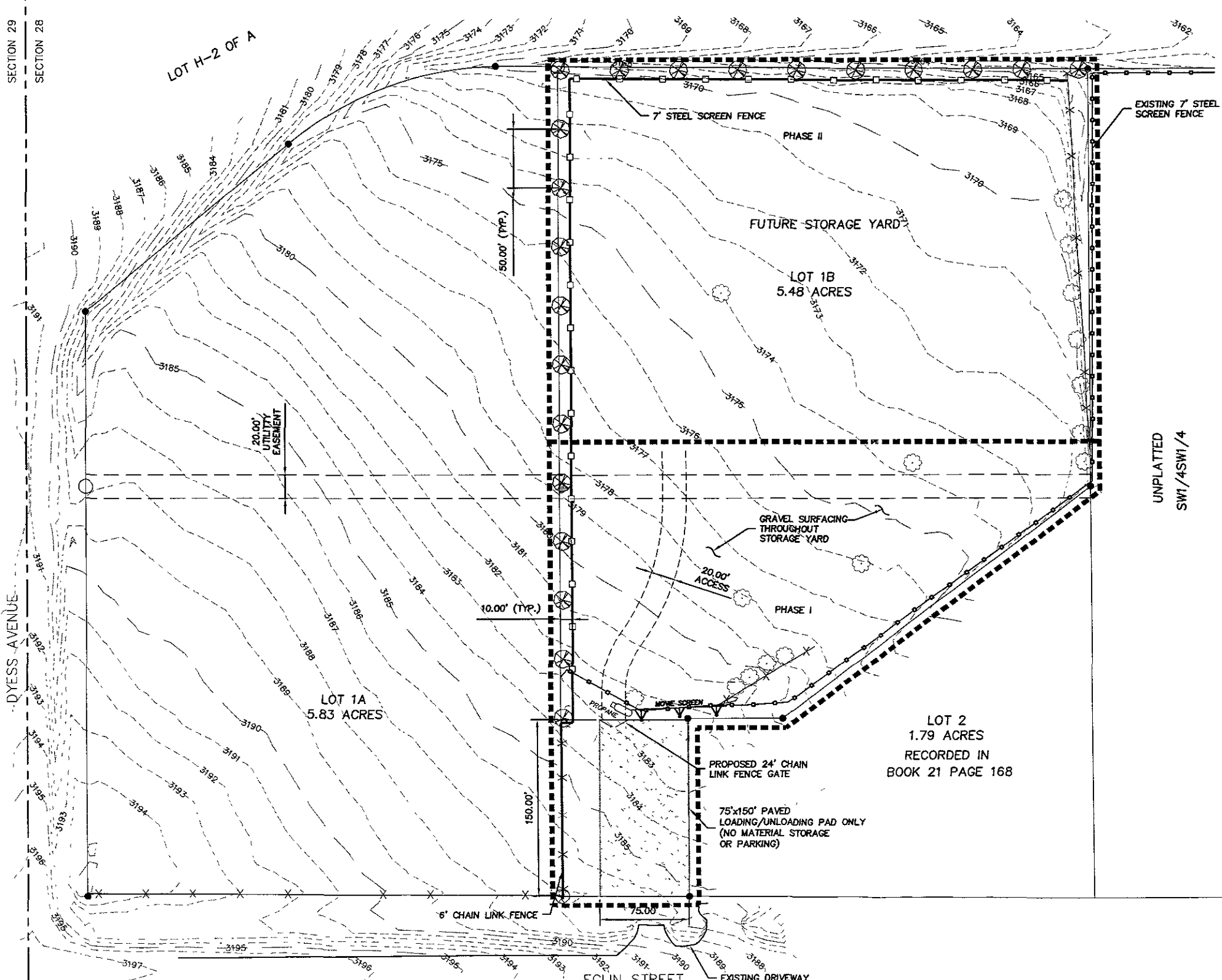
LOT 1A
5.83 ACRES

LOT 1B
5.48 ACRES

LOT 2
1.79 ACRES
RECORDED IN
BOOK 21 PAGE 168

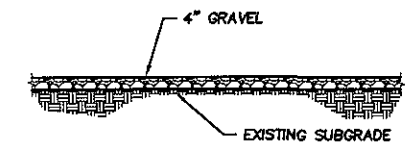
UNPLATTED
SW1/4SW1/4

EQWIN STREET
EXISTING DRIVEWAY



LEGEND

- LOADING/UNLOADING PAD
- 20' UTILITY EASEMENT
- 1' EXISTING CONTOUR
- PROPERTY CORNER
- EXISTING TREE
- PROPOSED TREE
- EXISTING 7' STEEL SCREEN FENCE
- 7' STEEL SCREEN FENCE
- 6' CHAIN LINK SCREEN FENCE
- PHASE LINE



GRAVEL SURFACING CROSS-SECTION
SCALE: N.T.S.

NOTES

1. NO MODIFICATIONS TO THE EXISTING GRADES ARE PROPOSED
2. ACCESS TO FUTURE STORAGE YARD WILL BE VIA THE GRAVEL ACCESS THROUGH THE PROPOSED STORAGE YARD

Scale	AS SHOWN
Designed By	SO
Drawn By	JS
Design Date	12-06
Print Date	12-06
Internal Job No	06-0439
Surveyed By	D.C. SCOTT
Survey Date	08-06
Revisions	

STARLITE SUBDIVISION
NEW STEEL STORAGE YARD

Sheet Title
EXHIBIT
A