

# NEW STEEL STORAGE YARD

## LOT 1B OF STARLITE SUBDIVISION,

## SECTION 33, T2N, R8E, BHM

## PENNINGTON COUNTY, RAPID CITY, SOUTH DAKOTA

### PROJECT # 06-0439

GROWTH MANAGEMENT DEPT.  
DEVELOPMENT SERVICES

Plans are reviewed for general conformance with applicable governmental regulations, stipulations, design criteria and engineering standards. The City of Rapid City does not certify the suitability, adequacy or completeness of the plans or design, which are the responsibility of the engineer of record. All necessary permits shall be obtained prior to construction of the proposed public improvements.

Engineering Reviewer \_\_\_\_\_ Date \_\_\_\_\_  
COMMENTS \_\_\_\_\_

DREAM DESIGN  
INTERNATIONAL, INC.  
PROFESSIONAL STRUCTURAL & CIVIL ENGINEERING CONSULTANTS  
608 KANSAS CITY ST., SUITE 4, RAPID CITY, SD 57701  
PH. 605-346-0630 FAX. 605-346-0646 EMAIL: engineers@dreamdesigninc.com



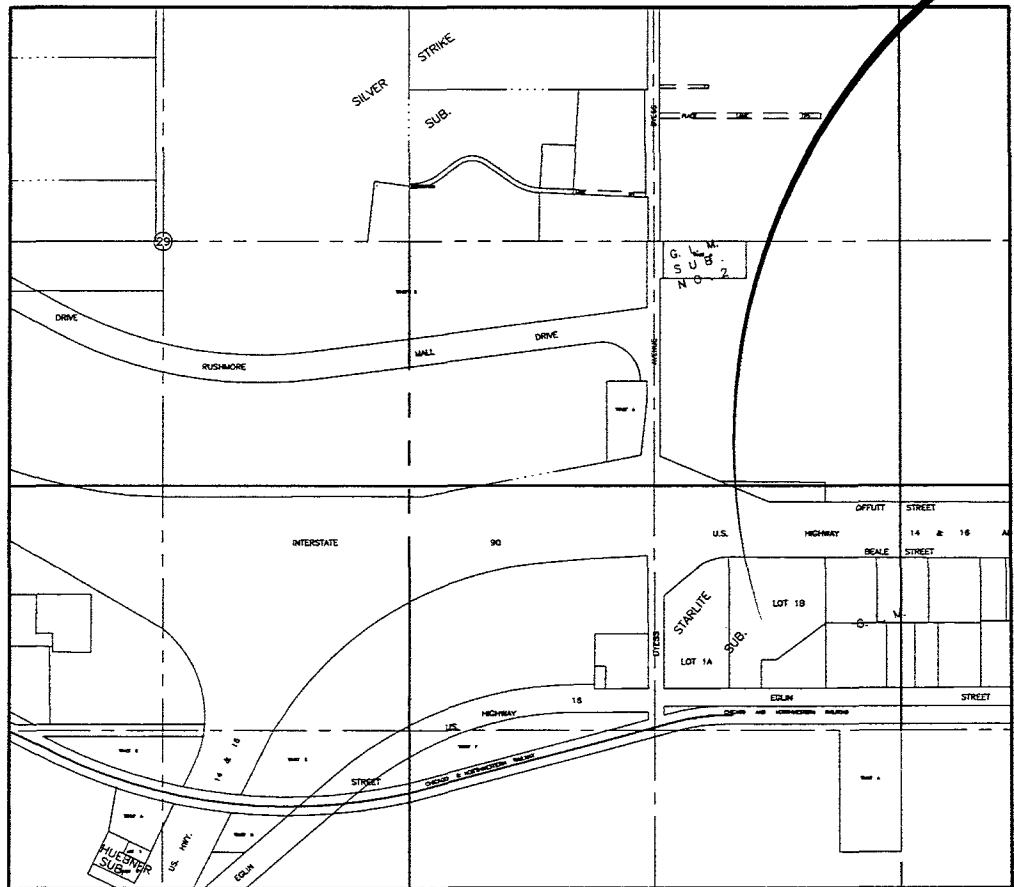
Plan Set Number:

# RECEIVED

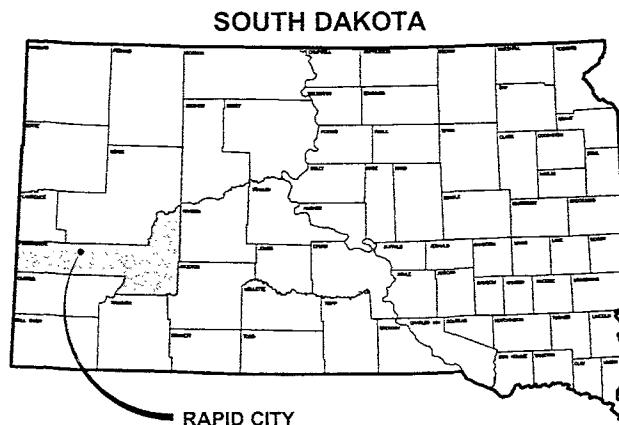
MAR 07 2007

Rapid City Growth  
Management Department

### PROJECT LOCATION



**PROJECT LOCATION MAP** NOT TO SCALE



### INDEX OF SHEETS

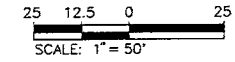
- 1 COVER SHEET
- 2 SITE LOCATION AND CROSS SECTION SHEET
- 3 FENCE DETAIL SHEET

ONE CALL  
BEFORE DIGGING  
1-800-781-7474

STARLITE SUBDIVISION  
NEW STEEL STORAGE YARD  
PROJECT # 06-0439



INTERSTATE 90

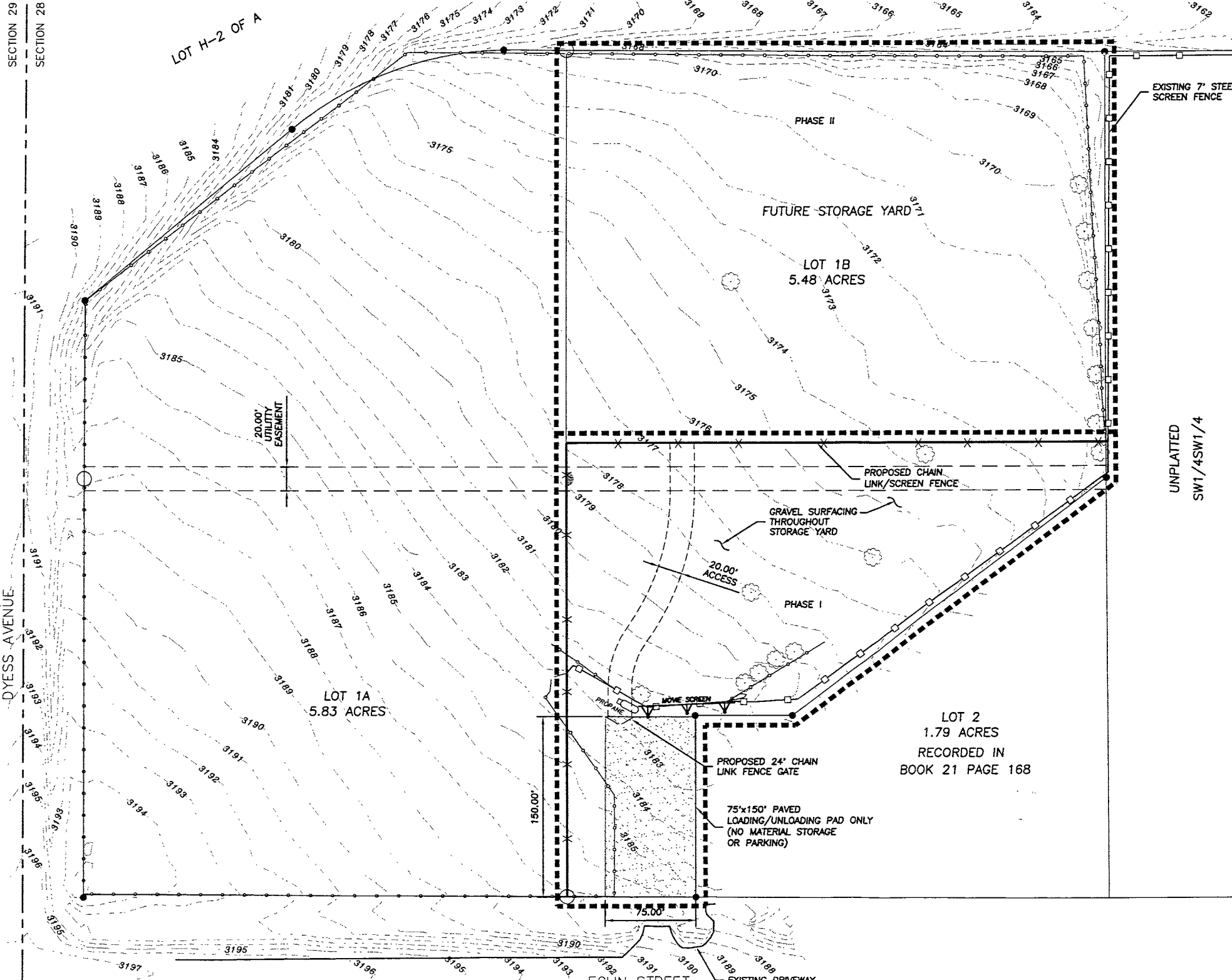


SECTION 29  
SECTION 28

LOT H-2 OF A

DYESS AVENUE

SECTION 29  
SECTION 28

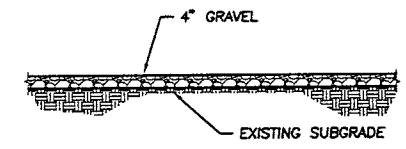


EXISTING 7' STEEL SCREEN FENCE

UNPLATTED  
SWT/4SW1/4

**LEGEND**

- LOADING/UNLOADING PAD
- 20' UTILITY EASEMENT
- 1' EXISTING CONTOUR
- PROPERTY CORNER
- EXISTING TREE
- 7' STEEL SCREEN FENCE
- 7' CHAIN LINK SCREEN FENCE
- PHASE LINE



GRAVEL SURFACING CROSS-SECTION  
SCALE: N.T.S.

**LANDSCAPING SUMMARY**

TOTAL SITE (SQ. FT.)	= 83,354.50
BUILDING COVERAGE	= 0.0
LANDSCAPE POINTS REQUIRED	= 83,354.50
6 EXISTING TREES @ 1,000 PTS EACH	= 6,000
LANDSCAPE POINTS PROVIDED	= 6,000
LANDSCAPE POINTS REQUIRED	= 83,354.50

**NOTES:**

1. NO MODIFICATIONS TO THE EXISTING GRADES ARE PROPOSED.
2. ACCESS TO FUTURE STORAGE YARD WILL BE VIA THE GRAVEL ACCESS THROUGH THE PROPOSED STORAGE YARD

Prepared By:

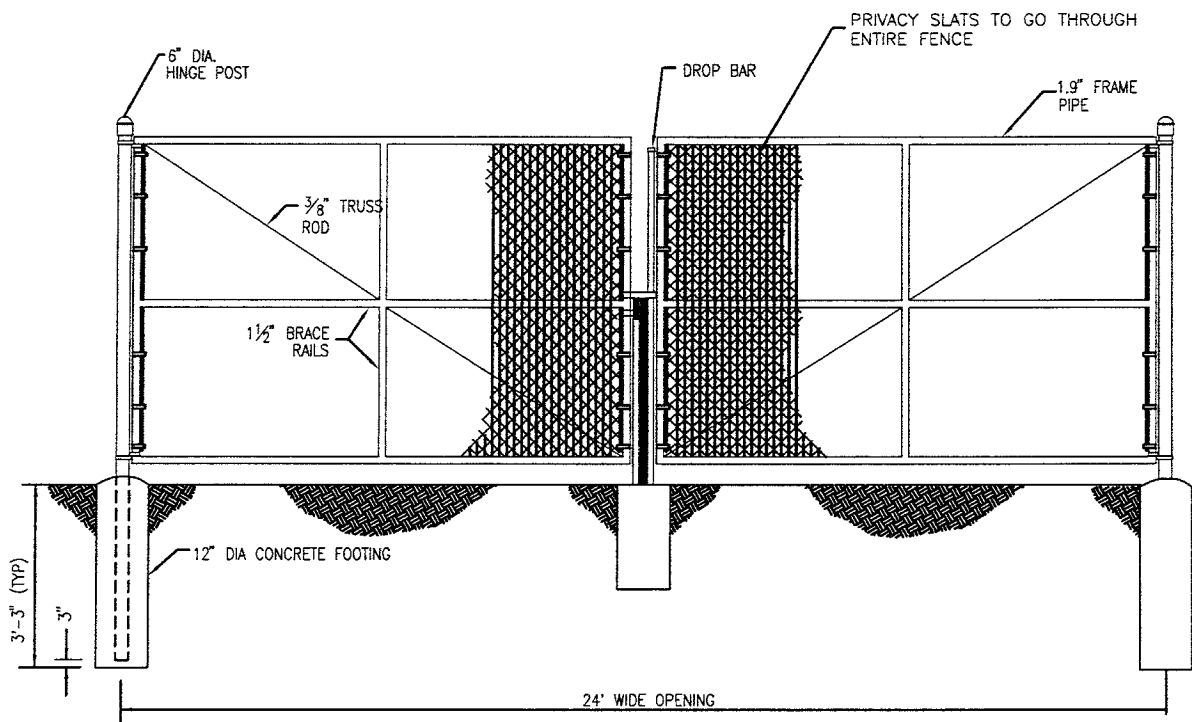
Scale:	AS SHOWN
Designed By:	SO
Drawn By:	JS
Design Date:	12-08
Print Date:	12-06
Internal Job No:	06-0439
Surveyed By:	D.C. SCOTT
Survey Date:	08-06
Revisions:	

**STARLITE SUBDIVISION  
NEW STEEL STORAGE YARD**

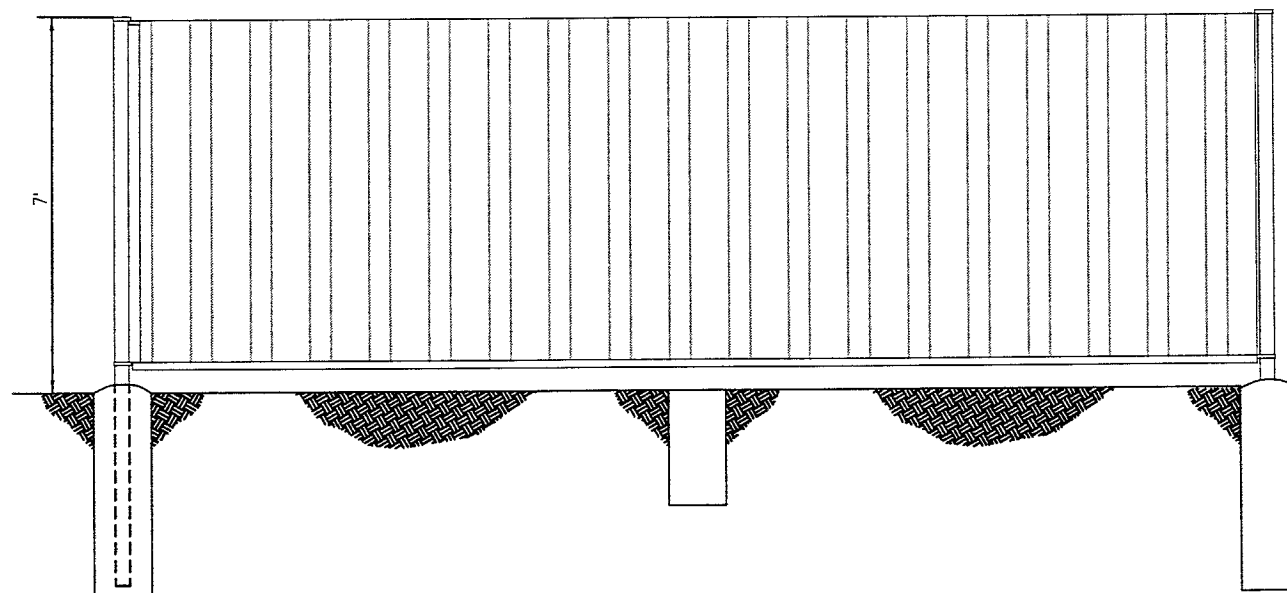
Sheet Title:

EXHIBIT  
A

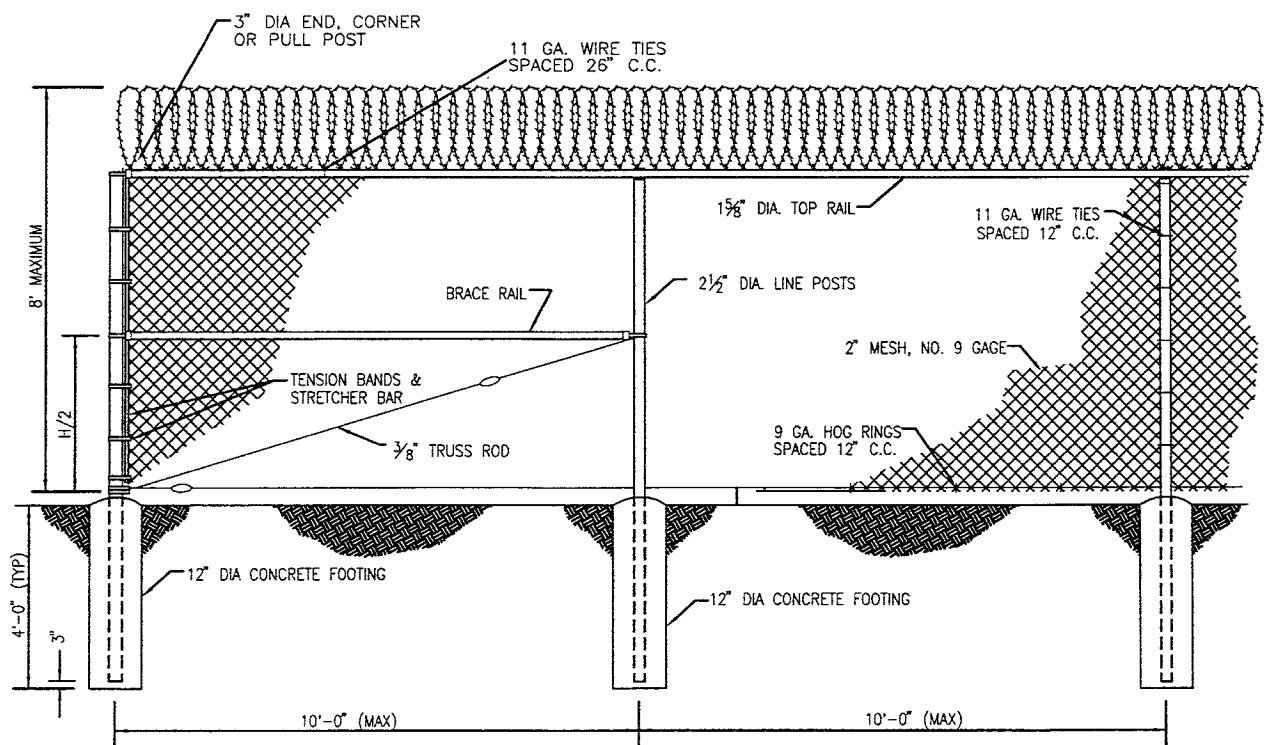
Sheet:



CHAIN LINK FENCE GATE  
N.T.S.



EXISTING STEEL SCREEN FENCE SECTION  
N.T.S.



CHAIN LINK FENCE  
N.T.S.



DREAM DESIGN  
INTERNATIONAL, INC.  
PROFESSIONAL STRUCTURAL & CIVIL ENGINEERING CONSULTANTS  
528 KANSAS CITY ST., SUITE 4, RAPID CITY, SD 57701  
PH. 605-348-0538 FAX. 605-348-0545 EMAIL: engineers@dreamdesign.com

Prepared By:

Scale: AS SHOWN

Designed By: SO Drawn By: JS

Design Date: 12-05 Print Date: 12-06

Internal Job No: 06-0439

Surveyed By: D.C. SCOTT Survey Date: 08-05

Revisions:

STARLITE SUBDIVISION  
NEW STEEL STORAGE YARD

Sheet Title:

CHAIN LINK FENCE  
DETAIL SHEET

Sheet:

3 of 3