

**NP**  
To Serve To Exceed Expectations

TSP, Inc.  
600 Kansas City Street,  
Rapid City, SD 57701

Phone: (605) 343-6102  
Fax: (605) 343-7299  
www.tspinc.com

Architectural  
Engineering  
Construction

RECEIVED

MAR 0 9 2007

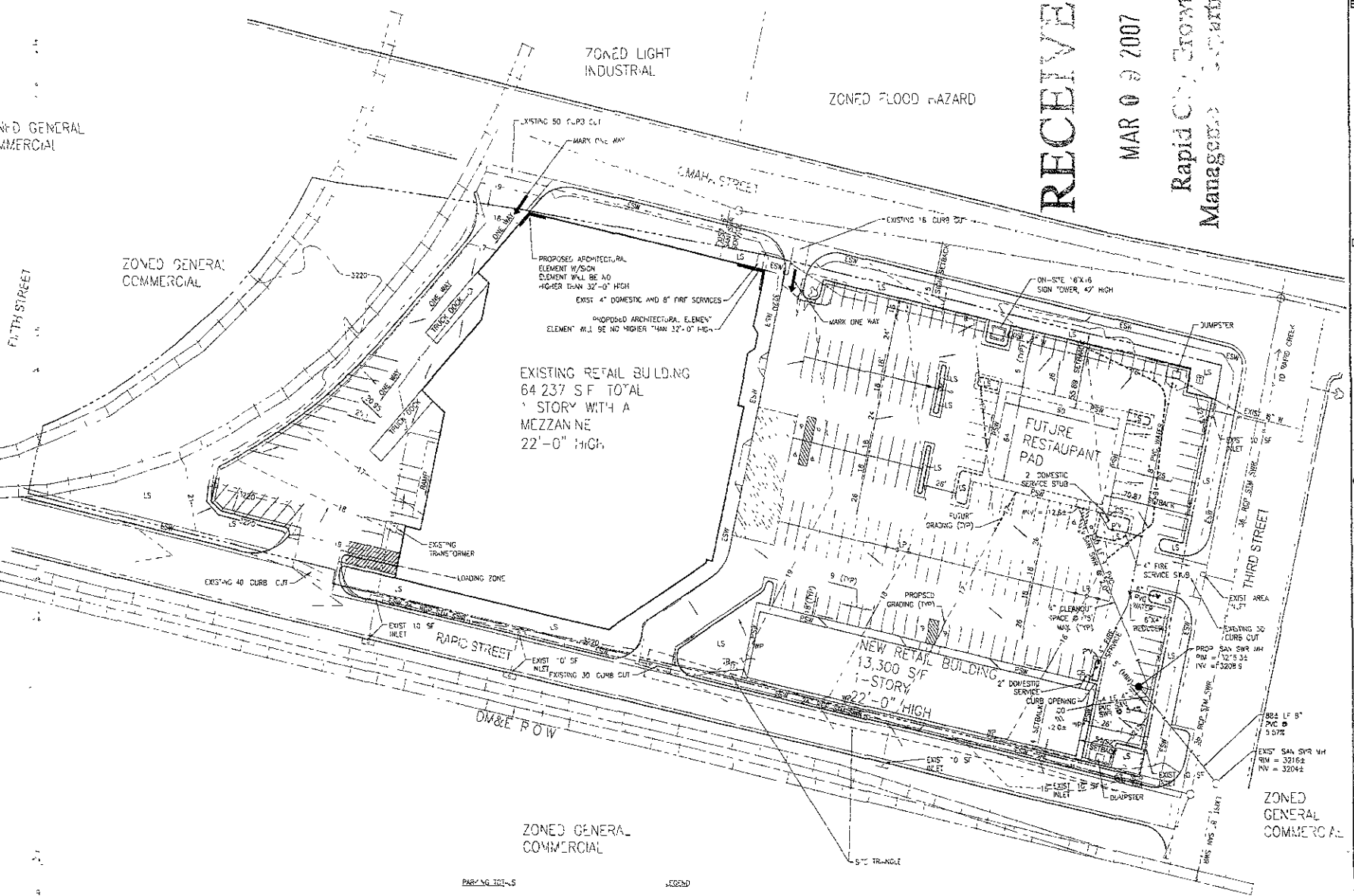
Rapid City Growth  
Management Department

ZONED GENERAL  
COMMERCIAL

ZONED GENERAL  
COMMERCIAL

ZONED LIGHT  
INDUSTRIAL

ZONED FLOOD HAZARD



EXISTING RETAIL BUILDING  
64 237 SF TOTAL  
1-STORY WITH A  
MEZZANINE  
22'-0" HIGH

NEW RETAIL BUILDING  
13,300 SF  
1-STORY  
22'-0" HIGH

FUTURE RESTAURANT  
PAD

PARKING TOTALS

|                 |            |
|-----------------|------------|
| FRONT           | 205 SPACES |
| BACK            | 22 SPACES  |
| HANDICAPPED     | 6 SPACES   |
| HANDICAPPED VAN | 2 SPACES   |
| TOTAL           | 235 SPACES |

- LEGEND
- S LANDSCAPED APFA
  - CS CURB STOP
  - FW FIRE HYDRANT
  - PV POE INDIC-TOP VALVE
  - ESW CONCRETE SIDEWALK
  - PSW PROPOSED CONCRETE SIDEWALK
  - LP NEW LIGHT POLE
  - WP WALL PACK LIGHT ON BUILDING
  - TR ELECTRIC TRANSFORMER
  - GRASS FLOW ARROW

ZONED GENERAL  
COMMERCIAL

ZONED GENERAL  
COMMERCIAL

Tuscany Square  
Shopping Center  
Rapid City, South Dakota

PROPOSED SITE LAYOUT

|          |             |
|----------|-------------|
| DATE     | DESCRIPTION |
| 12/20/06 | PRELIMINARY |
| 1/27/07  | PRELIMINARY |
| 2/28/07  | PRELIMINARY |
| 3/2/07   | PRELIMINARY |