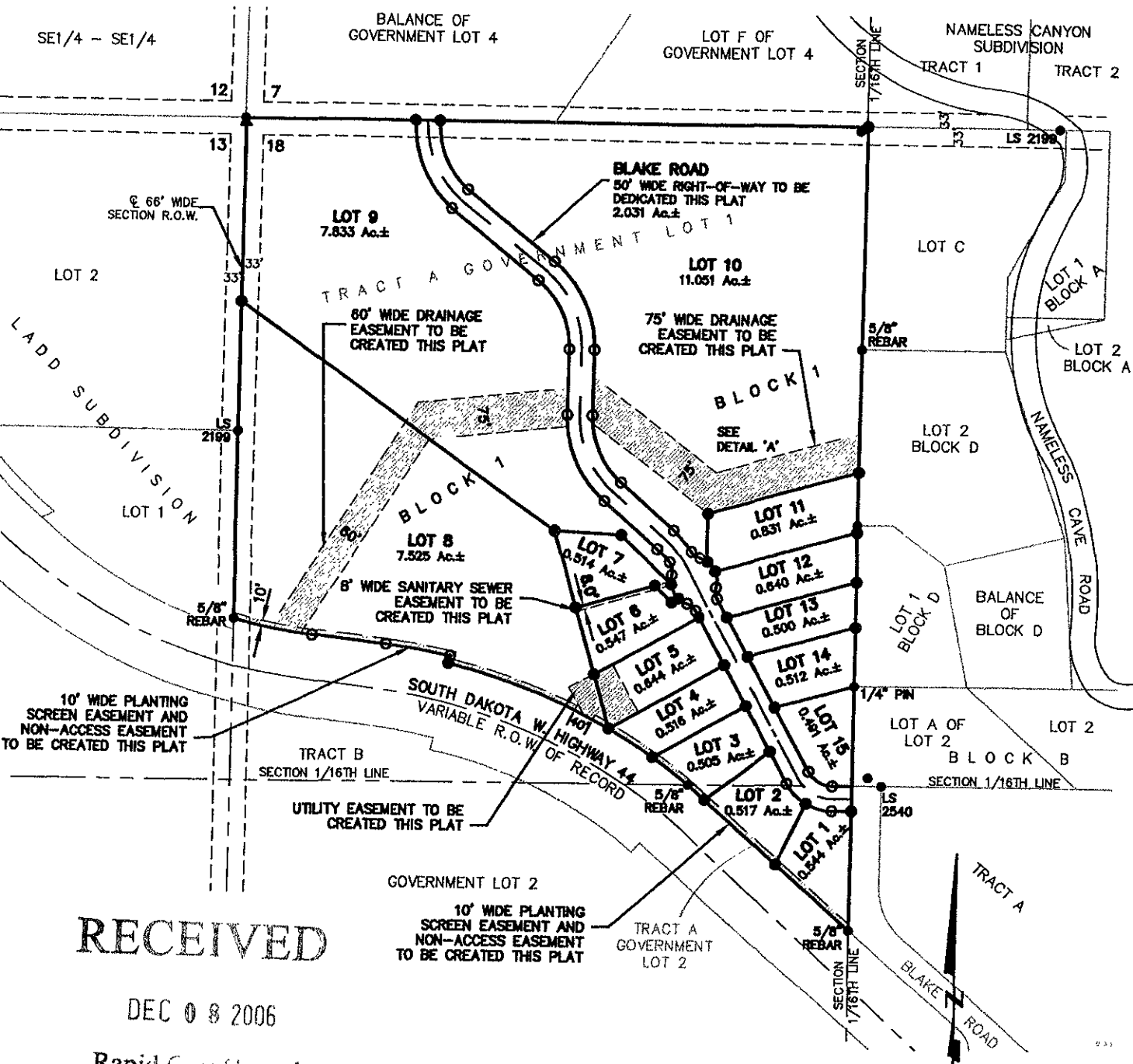


# PLAT OF LOTS 1-15 OF BLOCK 1, BLAKE ESTATES SUBDIVISION

LOCATED IN THE W1/2 OF THE NW1/4  
SECTION 18, T1N, R7E, BHM  
PENNINGTON COUNTY, SOUTH DAKOTA



## RECEIVED

DEC 08 2006

Rapid City Growth  
Management Department



CITY HALL 1903

## Renner Associates, LLC.

616 Sixth St. \* Rapid City, SD 57701 \* 605/721-7310

FAX: 605/721-7313 \* E-MAIL: Gary@RennerAssoc.com

DECEMBER 7, 2006



SCALE 1" = 300'