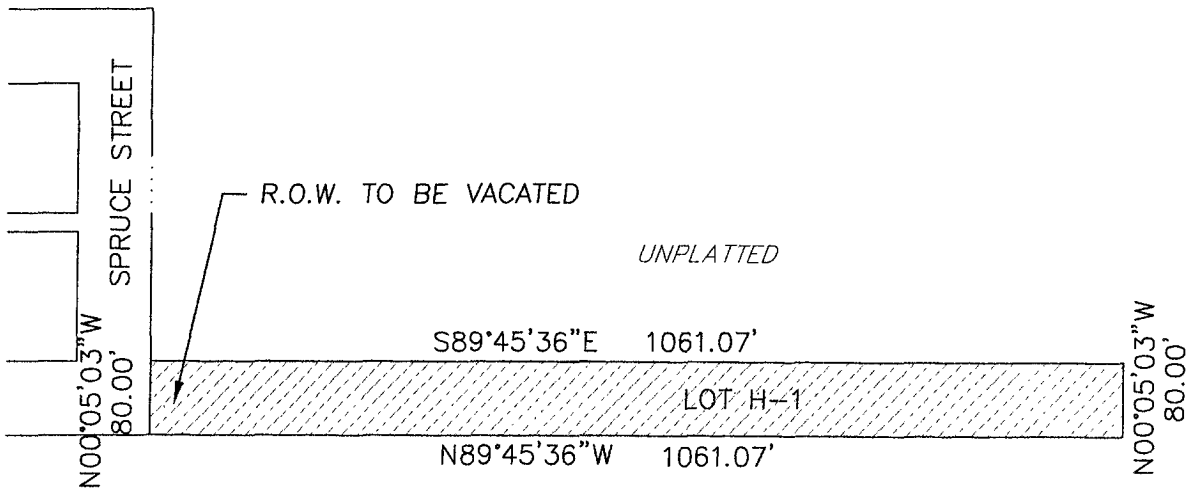


EXHIBIT A

PORTION OF RIGHT-OF-WAY TO BE VACATED
LOCATED IN THE S½N½SE¼ OF SECTION 30, T2N, R8E, BHM
RAPID CITY, PENNINGTON COUNTY, SOUTH DAKOTA



UNPLATTED

RECEIVED

FEB 28 2007

Rapid City Growth
Management Department



SCALE: 1" = 200'

PLAT OF LOT H-1
BOOK: HWY PLAT 10 PAGE: 163

C:\Drawings\Exhibits\EA\07VR003.DWG

Rushmore Crossing	
NO: 02-0028	REV 1:
DATE: August 28, 2006	REV 2:
DRAWN BY: IC	REV 3:



D.D.I.
DREAM DESIGN INTERNATIONAL, INC.
 PROFESSIONAL STRUCTURAL & CIVIL ENGINEERING CONSULTANTS
 528 KANSAS CITY ST., SUITE 4, RAPID CITY, SD 57701
 PH. 605-348-0538 FAX. 605-348-0545 EMAIL: engineers@dreamdesigninc.com