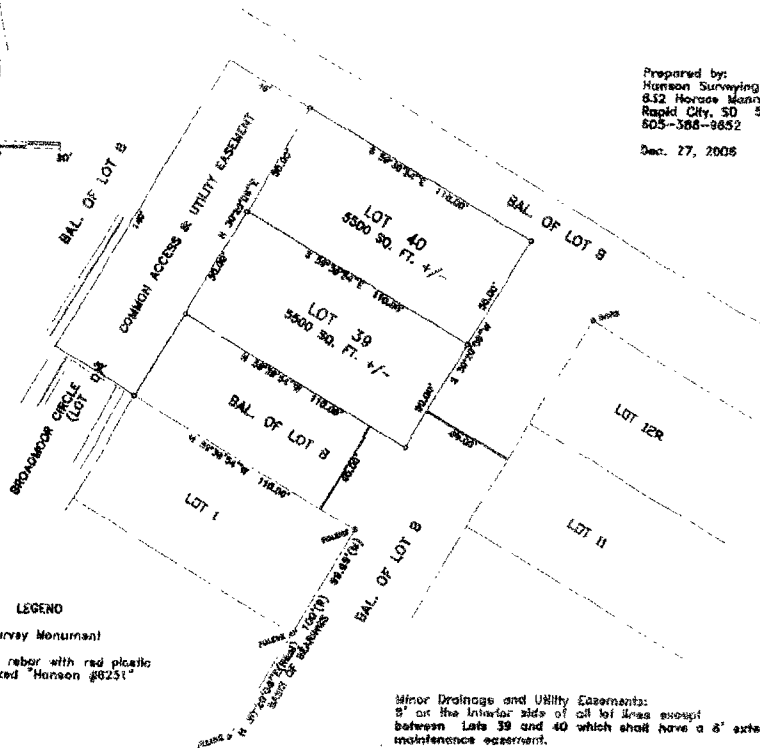
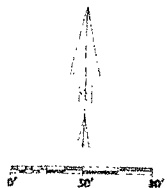


LOTS 39 AND 40 OF BROADMOOR SUBDIVISION PHASE 1
FORMERLY A PORTION OF LOT B OF BROADMOOR SUBDIVISION PHASE 1
LOCATED IN
RAPID CITY, PENNINGTON COUNTY, SOUTH DAKOTA



Prepared by:
Hanson Surveying & Mapping
852 Horace Mann Drive
Rapid City, SD 57701
605-388-8852

Dec. 27, 2006

LEGEND

- * Found Survey Monument
- o Set 5/8" rebar with red plastic cap marked "Hanson #6251"

Minor Drainage and Utility Easements:
8" on the interior side of all lot lines except
between Lots 39 and 40 which shall have a 6" exterior
maintenance easement.