

LOTS 10 THRU 27 OF BLOCK 4; LOTS 1 THRU 12 OF BLOCK 5 AND DEDICATED STREET, BEING A PORTION OF THE UNPLATTED PORTION OF THE SW1/4NW1/4NE1/4 LOCATED IN SECTION 24, T1N, R7E, B.H.M., PENNINGTON COUNTY, CITY OF RAPID CITY, SOUTH DAKOTA

NOTES:

- Denotes set 5/8" rebar with survey cap marked "ARLETH 3977".
○ Denotes Found Survey Monument w/cap as noted.
▨ Denotes Non-Access Easement per this Plat
▧ Denotes Drainage Easement per this Plat

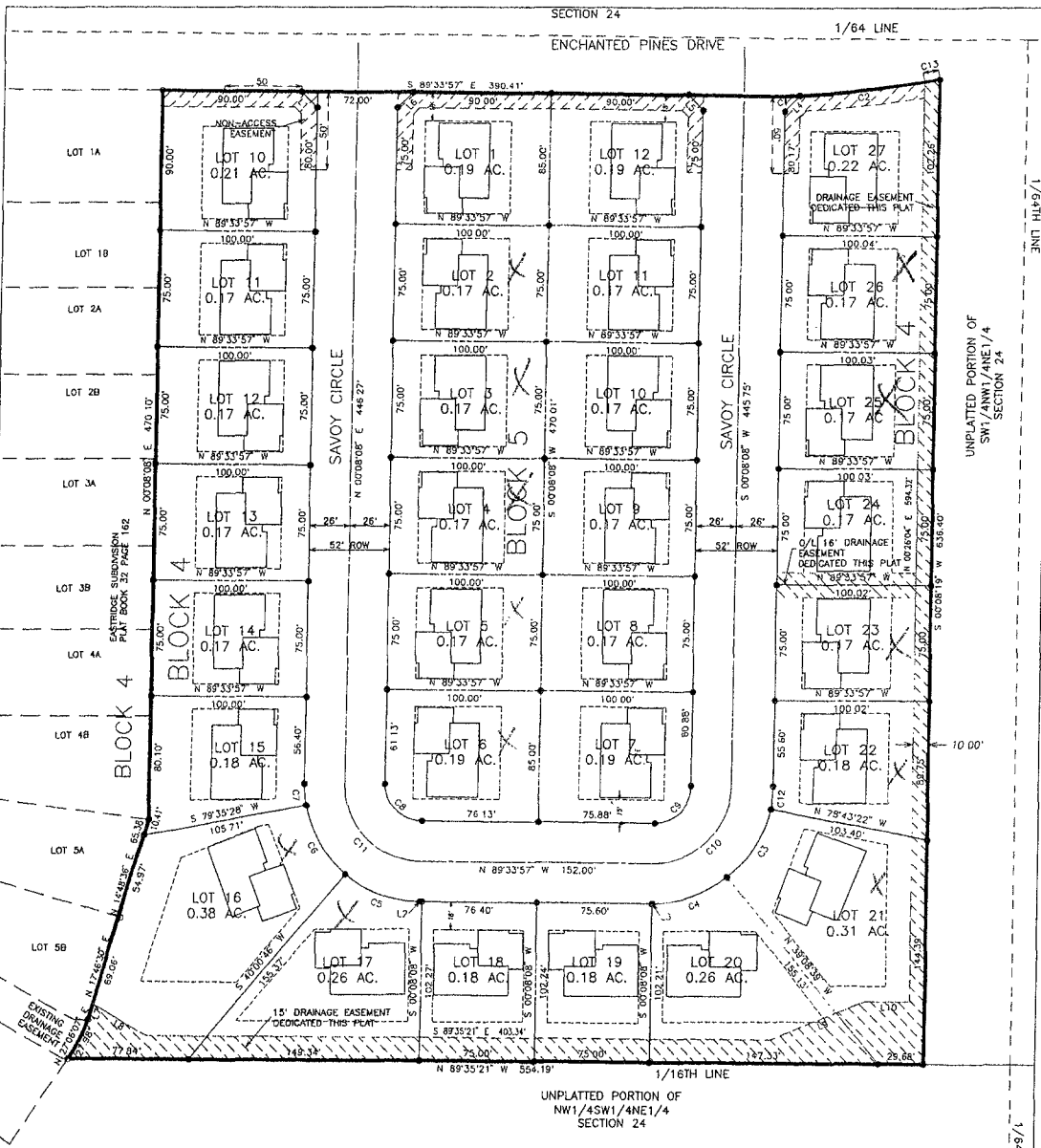
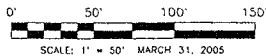


Table with 3 columns: LINE, BEARING, DISTANCE. Lists boundary measurements for various lines (L1-L11).

Table with 4 columns: CURVE, RADIUS, ARC LENGTH, CHORD LEN, CHORD BEARING. Lists curve data for lines C1-C13.

X - existing houses

NOTES:

- 1 MINOR DRAINAGE AND UTILITY EASEMENTS ARE HEREBY ESTABLISHED 8' WIDE ON THE INTERIOR SIDE OF ALL LOT LINES AND RIGHT-OF-WAY...
2. TOTAL PLATTED AREA, 7.28 ACRES, LOTS 5-8 4 ACRES; DEDICATED PUBLIC RIGHT-OF-WAY: 1.44 ACRES
3. ANY MAJOR DRAINAGE EASEMENT SHOWN HEREON SHALL BE KEPT FREE OF ALL OBSTRUCTIONS INCLUDING BUT NOT LIMITED TO BUILDINGS, WALLS, FENCES, HEDGES, TREES, AND SHRUBS...
4. NON-ACCESS EASEMENTS ARE HEREBY ESTABLISHED ALONG THE FIRST FIFTY FEET OF CORNER LOTS OR AS INDICATED HEREON

- 5 ALL BUILDERS SHALL MAINTAIN EXISTING DRAINAGE FACILITIES IN ACCORDANCE TO APPROVED CONSTRUCTION PLANS. (RAPID CITY ENG. DIV. REQUESTED NOTE)
6 ACREAGE SHOWN ON THIS PLAT IS SUBJECT TO EASEMENTS

RECEIVED

FEB 23 2007

Rapid City Growth Management Department