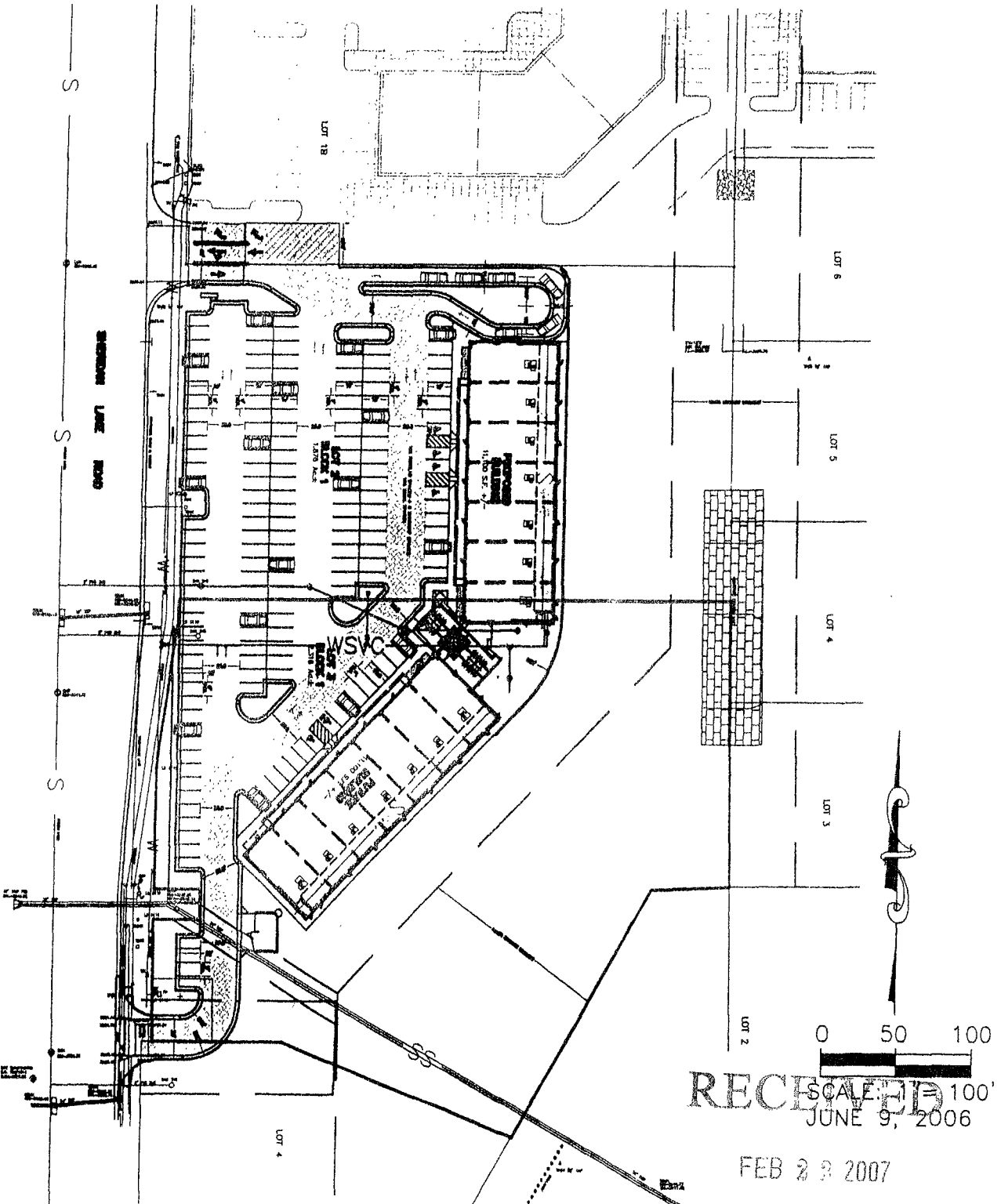


SITE PLAN

LOT 2 AND LOT 3 OF BLOCK 1,
STONEY CREEK SOUTH SUBDIVISION,
LOCATED IN THE NW¼ OF THE SW¼ AND THE SW¼ OF THE SW¼,
SECTION 22, T1N, R7E, B.H.M.
RAPID CITY, PENNINGTON COUNTY, SOUTH DAKOTA



RECEIVED SCALE 1"=100'
JUNE 9, 2006

FEB 23 2007

Rapid City Growth
Management Department