

# Title Page

## RCYC Rapid Mall

### Property Legal Description

Lot 1 in Block 10 of McMahon Industrial Park No. 2, City of Rapid City, Pennington County, South Dakota, as shown on the plat filed in Plat Book 10, Page 142

### Premises Legal Description

Commencing at the southeast corner of Lot 10 in Block 1 of McMahon Industrial Park No. 2, City of Rapid City, Pennington County, South Dakota, as shown on the plat filed in Plat Book 10, Page 142, said point being marked with a #5 rebar;

thence N89°59'20"W 16.23 on the south boundary of the aforementioned Lot 1 to the true point of beginning, said point being marked with a rebar with cap marked "RW FISK 6565";

thence N89°59'20"W 60.00 on the south boundary of the aforementioned Lot 1 to a rebar with cap marked "RW FISK 6565";

thence N0°00'40"E 60.00 to a rebar with cap marked "RW FISK 6565";

thence S89°59'20"E 60.00 to a rebar with cap marked "RW FISK 6565";

thence S0°00'40"W 60.00 to the point of beginning,

said area contains 3,600 Square Feet, more or less

### Access and Utility Route Description

Commencing at the southeast corner of Lot 1 in Block 10 of McMahon Industrial Park No. 2, City of Rapid City, Pennington County, South Dakota, as shown on the plat filed in Plat Book 10, Page 142, said point being marked with a #5 rebar;

thence N89°59'20"W 16.23 on the south boundary of the aforementioned Lot 1 to a rebar with plastic cap marked "RW FISK 6565";

thence N89°59'20"W 50.00 on the south boundary of the aforementioned Lot 1 to a rebar with cap marked "RW FISK 6565";

thence N0°00'40"E 13.89 feet to the true point of beginning, said point representing the centerline of a strip of land 20 feet in width

whose sides shall be foreshortened and extended to terminate on the premises boundary as previously defined and right-of-way hereinafter described:

thence N89°59'20"W 137.28 to a point of curvature;

thence curving to the right on a curve with a radius of 35.00 feet a delta of 39 degrees, 42 minutes, 15 seconds, a length of 24.25 feet, a chord bearing of N70°08'13"W and a chord distance of 23.77 feet to a point of reverse curvature;

thence curving to the left on a curve with a radius of 35.00 feet a delta of 39 degrees, 42 minutes, 41 seconds, a length of 24.26 feet, a chord bearing of N70°08'25"W and a chord distance of 23.78 feet to a point of tangency;

thence N89°59'46"W 159.54 to the terminus at the west boundary of the aforementioned Lot 1 and the east right-of-way line of Haines Avenue

### TOWER COORDINATES

N44°06'48.2"

W103°13'12.7"

WGS84

3,380.1 NGVD29

### SCHEDULE B ITEMS

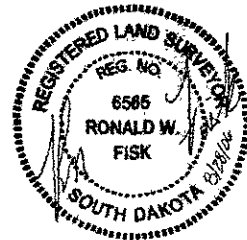
First American Title Company of South Dakota - File Number 00076758

11 Right of Way Permit granted to Black Hills Power and Light Company to construct, operate and maintain an electrical power system and an electric power line, together with the power to extend use to any telephone company, upon, over and across Lot 1, Block 10, McMahon Industrial Park # 2, as set forth in instrument recorded February 12, 1986, in Misc Book 27, Page 2345

Easement is not geometrically described. Easement location is shown per existing overhead lines. Some portions of overhead lines do not appear to be included in this easement.

12 Right of Way granted to Black Hills Corporation, to construct, operate and maintain an electrical power system and an electric power line, together with the power to extend use to any communications company, upon, over and across Lot 1, Block 10, McMahon Industrial Park No. 2, as set forth in instrument recorded March 16, 2000, in Book 83, Page 1081

Easement is not geometrically described. Easement location is shown per existing overhead lines.



Fisk Land Surveying  
& Consulting  
Engineers, Inc.

Date  
8/9/06

Surveyed by  
ML, DR

Drawn by  
RWF, BL

Checked by  
WF

Revisions

Project No.  
06-08-02

1022 Main Street  
P.O. Box 814  
Rapid City, South Dakota  
57709  
(605) 345-1838  
(605) 345-1113 (fx)

RCYC Rapid Mall

Lot 1, Block 10, McMahon Industrial Park No. 2

Located in the SW1/4 SE1/4  
Section 24, T28N, R72E of the BHM.

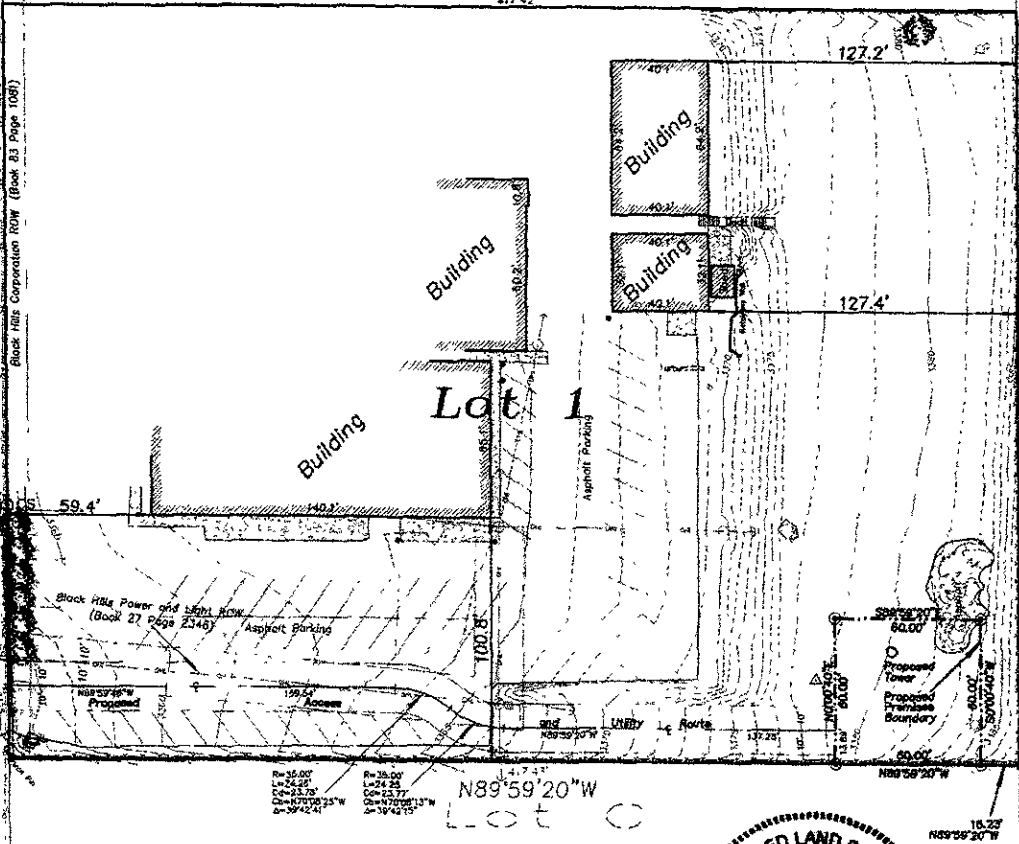
Rapid City, Pennington County, South Dakota

Haines Avenue  
(100' ROW)

1/4 Section Line (located from plat)

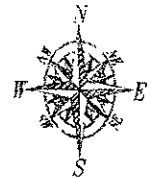
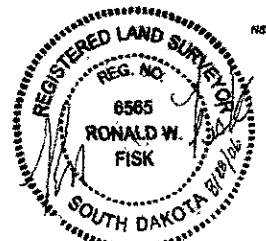
N0°04'28"W  
312.0

Black Hills Corporation ROW (Book 83 Page 108)



P=16.00 L=24.25  
 C=23.78 O=25.77  
 S=17°06'25"W Z=19°42'41"

N89°59'20"W



0 25 50

1" = 50'  
August 28, 2006

**LEGEND**

- N00°00'00"W = Measured this survey
- N00°00'00"W = Recorded on previous plat
- = Sanitary Sewer Manhole (Unless noted)
- = Fire Hydrant
- = Water Valve
- = Curb Stop
- = Utility Pole
- = Light Pole
- = Street Light
- = Guy Wire
- = Electric Meter
- = Telecommunications Pedestal
- = Mail Box
- = Bollard
- = Chain Link Fence Line
- = Sanitary Sewer Line
- = Found Survey Monument as noted
- = Set Rebar with cap marked "RW Fisk 6565"
- = Control Point
- = Bush/Tree (Deciduous)

**SURVEYOR'S NOTES**

Utilities shown are from visual inspection, sketches provided by individual service providers and Utility Locates performed by South Dakota One Call, Ticket Number 061930408. The actual location of utilities and service lines may vary from the information shown hereon.

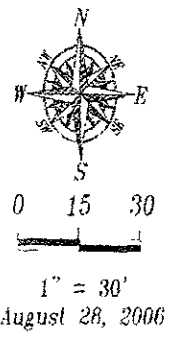
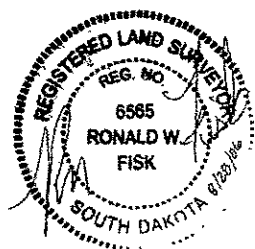
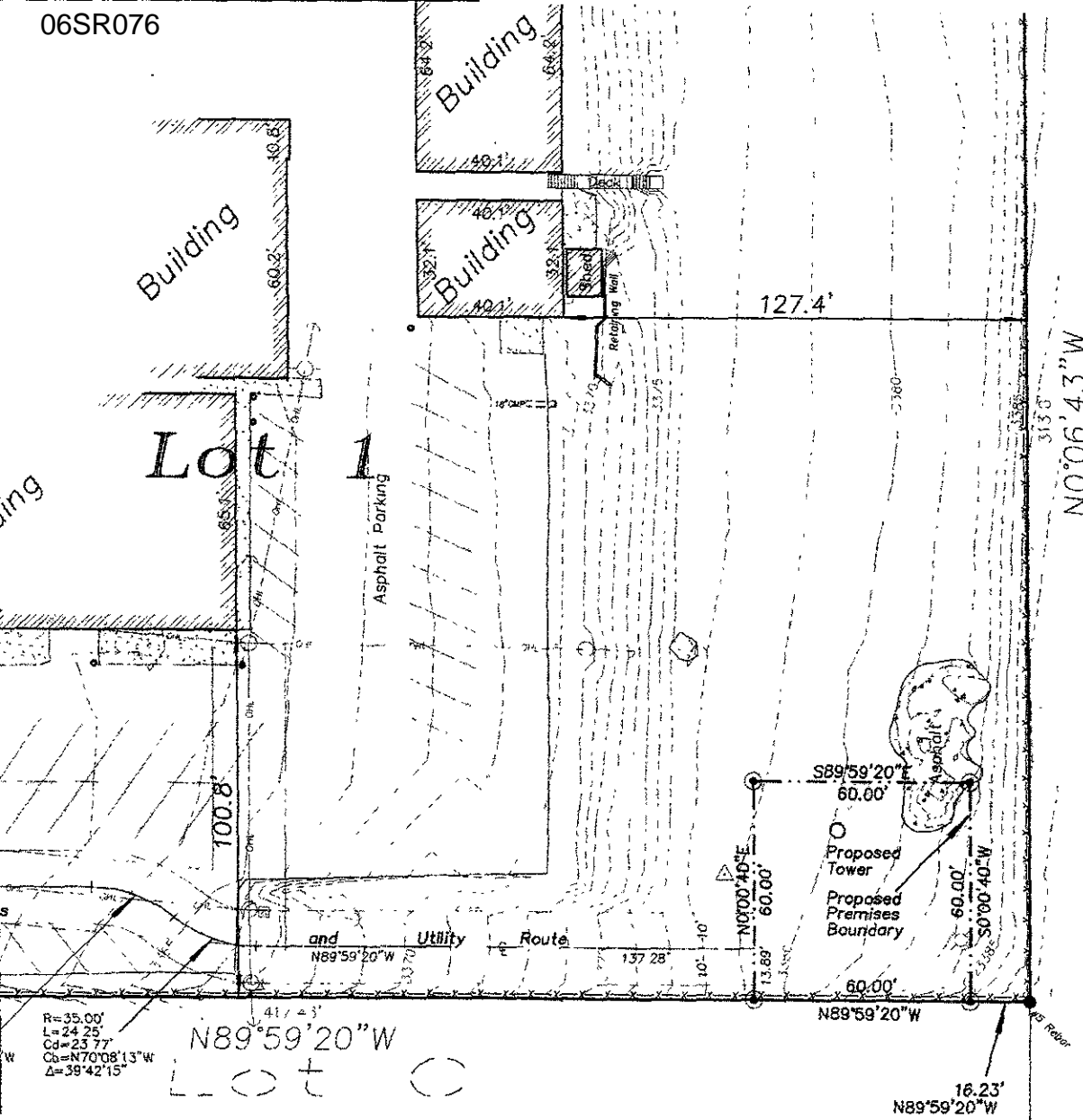
Bench Mark: STA 2039(NGVD29)

**RCYC Rapid Mall**  
 Lot 1, Block 10, McManis Industrial Park No. 2  
 located in the SW1/4 SE1/4  
 Section 24, T2N, R7E of the BHM,  
 Rapid City, Pennington County, South Dakota

1022 Main Street  
 P.O. Box 914  
 Rapid City, South Dakota  
 57709  
 (605) 348-1536  
 (605) 341-1112 (fax)

**Fisk Land Surveying  
 & Consulting  
 Engineers, Inc.**

Date	8/9/06
Surveyed by	ML,DR
Drawn by	RWF,BL
Checked by	WF
Revisions	
Project No	06-08-02



**LEGEND**

- N00°00'00"W = Measured this survey
- N00°00'00"W = Recorded on previous plat
- (C) = Sanitary Sewer Manhole (Unless noted)
- = Fire Hydrant
- = Water Valve
- = Curb Stop
- = Utility Pole
- = Light Pole
- = Street Light
- = Guy Wire
- = Electric Meter
- = Telecommunications Pedestal
- = Mail Box
- = Ballard
- = Chain Link Fence Line
- = Sanitary Sewer Line
- = Found Survey Monument as noted
- = Set Rebar with cap marked "RW Fisk 6565"
- = Control Point
- = Bush/Tree (Deciduous)

**SURVEYOR'S NOTES**

Utilities shown are from visual inspection, sketches provided by individual service providers and Utility Locates performed by South Dakota One Call, Ticket Number 061930408. The actual location of utilities and service lines may vary from the information shown herein.

Bench Mark: STA2039(NGVD29)

RCYC Rapid Mall  
 located in the SW1/4 SE1/4  
 Section 24, T2N, R7E of the BHM,  
 Rapid City, Pennington County, South Dakota

1022 Main Street  
 P.O. Box 8154  
 Rapid City, South Dakota  
 57706  
 (605) 342-1535  
 (605) 342-1113 (fax)

Fisk Land Surveying  
 & Consulting  
 Engineers, Inc.

Date	8/9/06
Surveyed by:	ML,DR
Drawn by:	RWF,BL
Checked by:	WF
Revisions	
Project No	06-08-02