

**PRELIMINARY PLAT OF
 LOT 4R OF BLOCK 5 OF THE REPLAT OF HARNEY PEAK VIEW ADDITION,
 (FORMERLY LOT 4 OF BLOCK 5 AND LOT B OF LOT 6 OF BLOCK 2 OF THE
 REPLAT OF HARNEY PEAK VIEW ADDITION)
 LOCATED IN THE E1/2 NE1/4 OF SECTION 9,
 TOWNSHIP 1 NORTH, RANGE 8 EAST OF THE BLACK HILLS MERIDIAN,
 PENNINGTON COUNTY, SOUTH DAKOTA.
 FEBRUARY, 2007**

NOTES

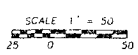
1. UTILITY AND MINOR DRAINAGE EASEMENTS RESERVED 8 FEET WIDE ON THE INTERIOR SIDE OF ALL LOT LINES EXCEPTING UNDERGROUND UTILITIES OR POLES WITH A 2.5 FOOT RADIUS AROUND EACH PROPERTY CORNER OR WITNESS CORNER MONUMENT
2. RECORDING OF THIS PLAT VACATES LOT B OF LOT 6 OF BLOCK 2 OF THE REPLAT OF HARNEY PEAK VIEW ADDITION AS SHOWN ON PLAT RECORDED IN PLAT BOOK 10, PAGE 211 IN THE OFFICE OF THE PENNINGTON COUNTY REGISTER OF DEEDS
3. PRELIMINARY PLAT CONTOURS INTERPOLATED FROM PENNINGTON COUNTY / RAPID CITY GIS


CURVE TABLE

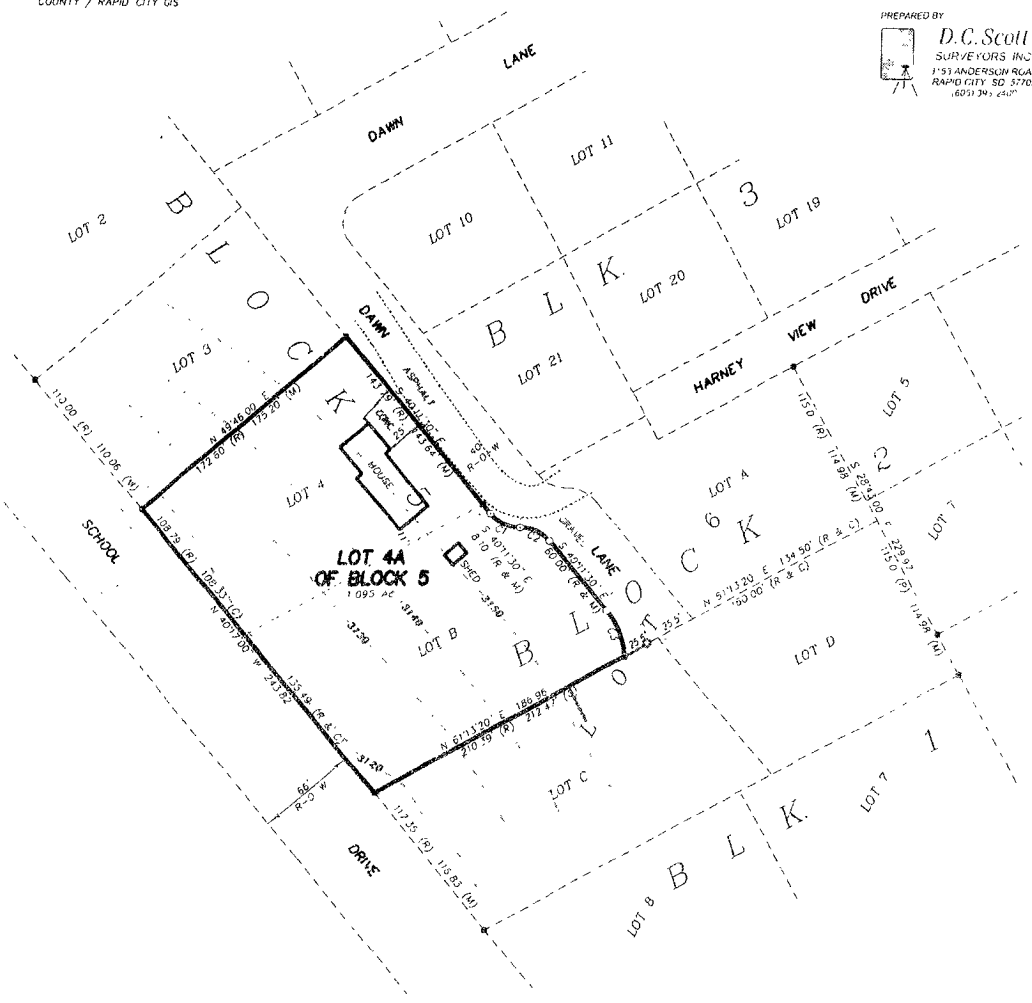
- C1 Δ=50.53'00"
R=25.00'
L=22.20'
- C2 Δ=50.53'00"
R=25.00'
L=22.20'
- C3 Δ=36.24'27"
R=51.23'
L=32.55'

LEGEND

- SET 5/8" IRON ROD WITH CAP MARKED 'DEAN SCOTT, L.S. 4887'
- FOUND PROPERTY BOUNDARY MONUMENT AS DESCRIBED
- IRON ROD
- (R) RECORDED DIMENSION
- (M) MEASURED DIMENSION
- (C) COMPUTED DIMENSION



PREPARED BY

D.C. Scott
 SURVEYORS INC.
 153 ANDERSON ROAD
 RAPID CITY, SD 57703
 (605) 341-6200



PRELIMINARY
 Plat of Lot 4R of Block 5 of the Replat of Harney Peak View Addition