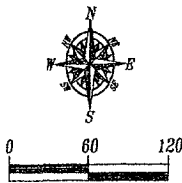


# PLAT OF LOT H-9

Showing a tract of land to be dedicated for highway purposes  
in the SW1/4 NE 1/4 Section 4, T1N, R8E, B.H.M.

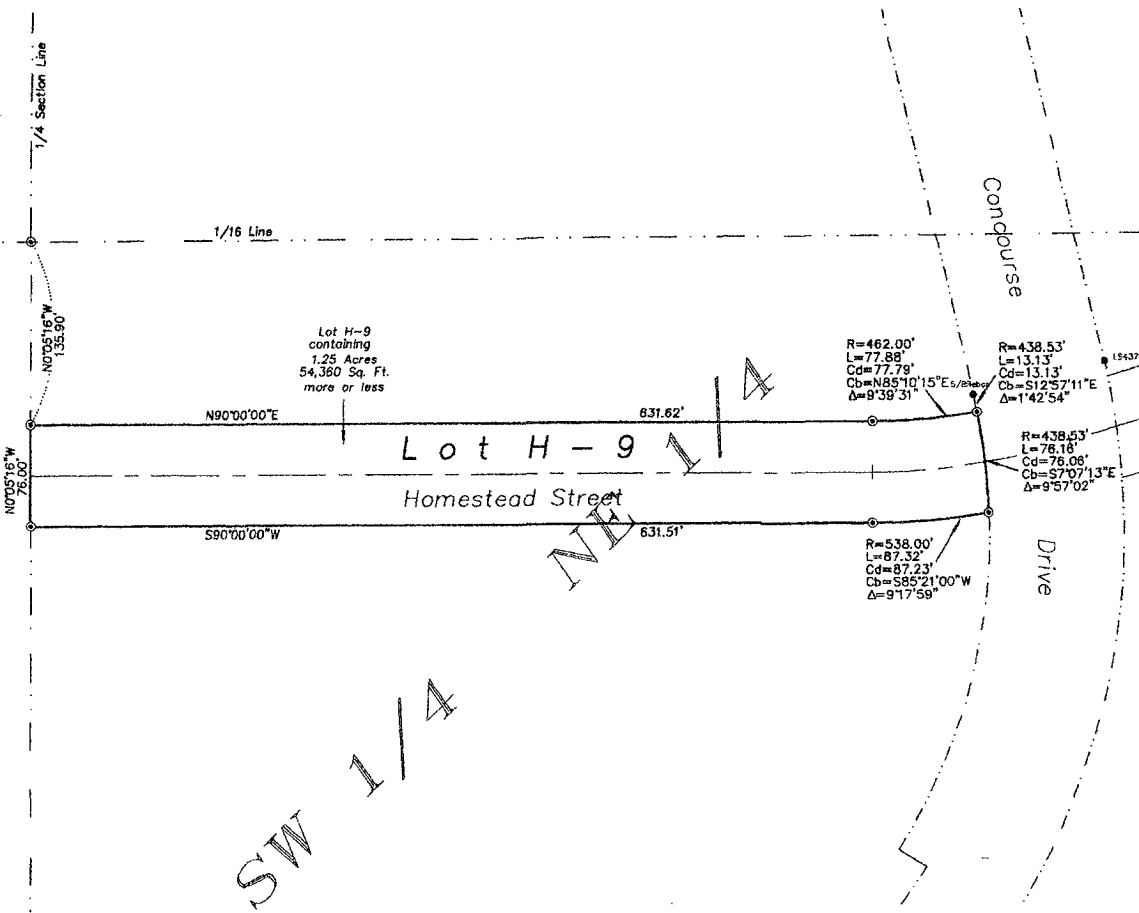
Rapid City, Pennington County, South Dakota

Scale: 1" = 60'



January 25, 2007

- = Found Survey Monument as noted
- ⊙ = Set Rebar with cap marked "RW Fisk 6565"



## SURVEYOR'S CERTIFICATE

I, Ronald W. Fisk, Registered Land Surveyor in the State of South Dakota, do hereby state that  
at the direction of the City of Rapid City this tract of land as shown on this plat has been  
surveyed at my direction and under my control, and such tract of land shall be hereafter known  
by the lot number designated herein. The location and dimensions of the tract are shown on this plat.

In witness whereof,  
I have set my hand and seal this 26 day of January, 2007

  
Ronald W. Fisk  
Registered Land Surveyor

Fisk Land Surveying and  
Consulting Engineers, Inc.  
P.O. Box 8154  
Rapid City, SD 57709  
(605) 348-1538

