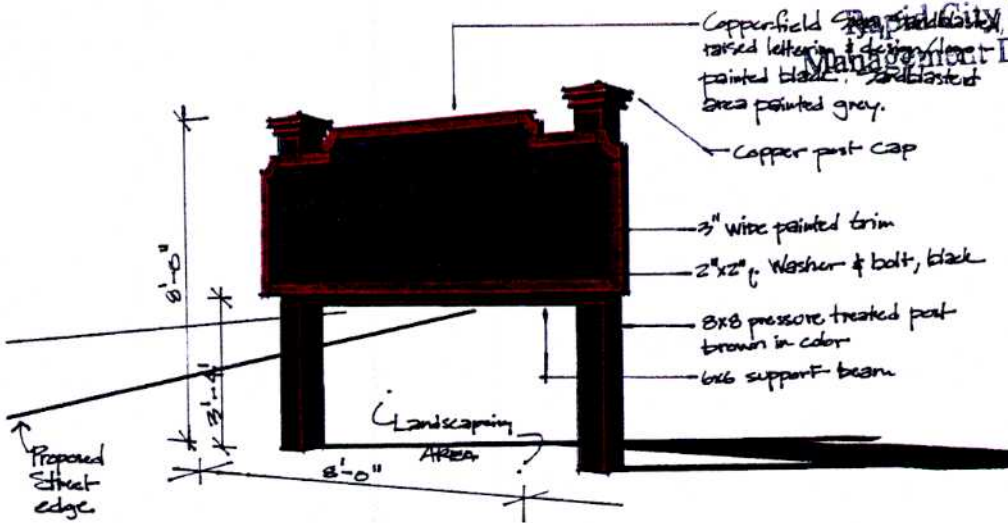


Copperfield Vistas Development Signage and Locations

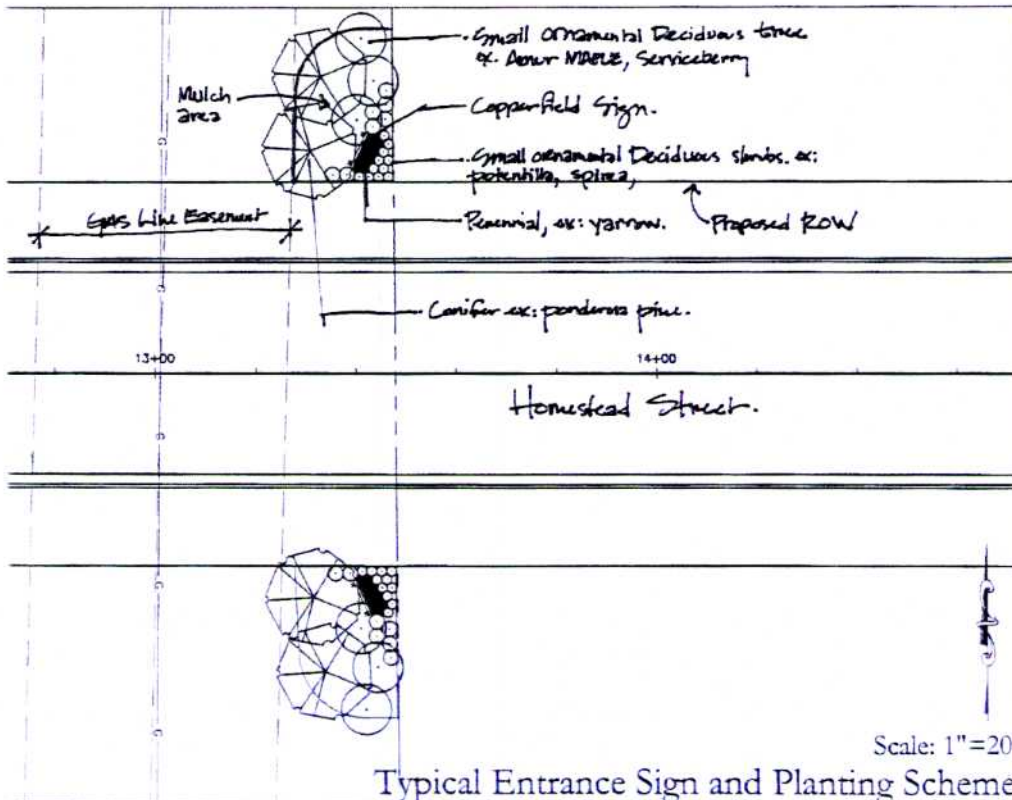
JAN 26 2007

Rapid City Growth
Management Department



NOTE: All colors to be earth tones & final color determination shall be made by developer. Contractor shall provide full scale mock-up prior to construction.

Copperfield Vistas
ENTRANCE Sign.
PRD Submittal 1/26/07



Typical Entrance Sign and Planting Scheme

Copperfield Vistas Subdivision - DDI No. 06-0432

528 Kansas City Street Suite #4, Rapid City, SD 57701

Telephone: (605) 348-0538, Fax: (605) 348-0545, Email: engineers@dreamdesigninc.com