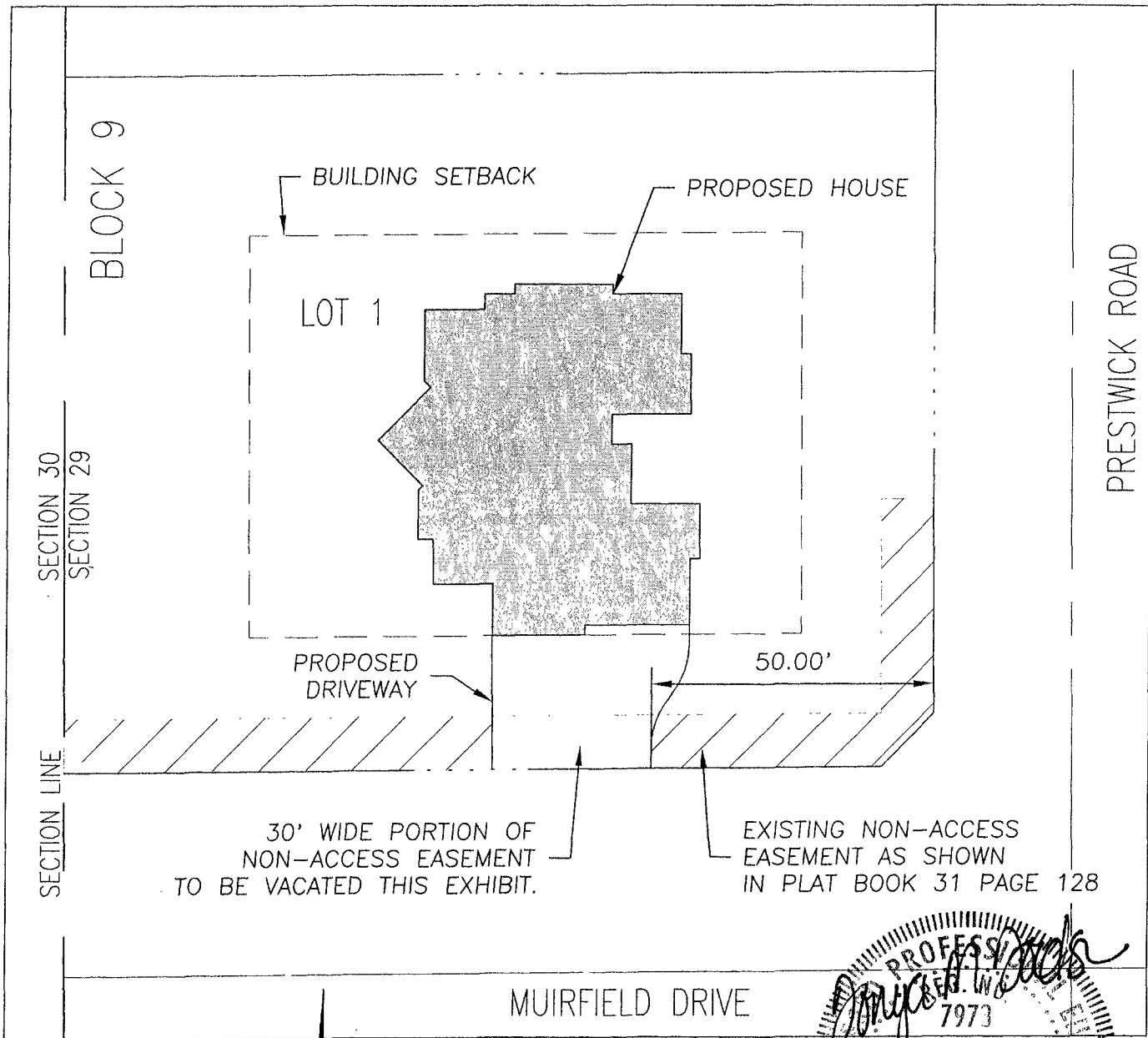


EXHIBIT A

30' WIDE PORTION OF NON-ACCESS EASEMENT TO BE VACATED  
LOCATED IN LOT 1 OF BLOCK 9, RED ROCK ESTATES

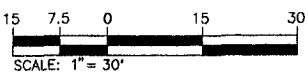
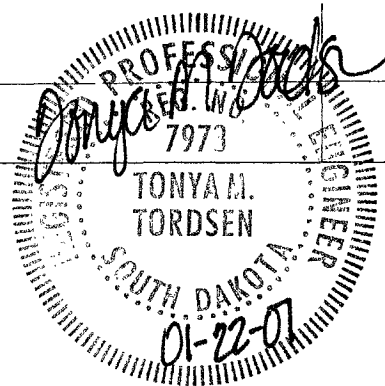
LOCATED IN THE SW<sup>1</sup>/<sub>4</sub>NW<sup>1</sup>/<sub>4</sub> OF SECTION 29, T1N, R7E, BHM  
RAPID CITY, PENNINGTON COUNTY, SOUTH DAKOTA



RECEIVED

JAN 26 2007

Rapid City Growth  
Management Department



NON-ACCESS EASEMENT VACATION

PROJECT NO: 07-0453	REV 1:
DATE: 1-22-07	REV 2:
DESIGNED BY: JG	REV 3:



**D.D.I.**  
**DREAM DESIGN INTERNATIONAL, INC.**  
 PROFESSIONAL STRUCTURAL & CIVIL ENGINEERING CONSULTANTS

528 KANSAS CITY ST., SUITE 4, RAPID CITY, SD 57701  
 PH. 605-348-0538 FAX. 605-348-0545 EMAIL: engineers@dreamdesigninc.com