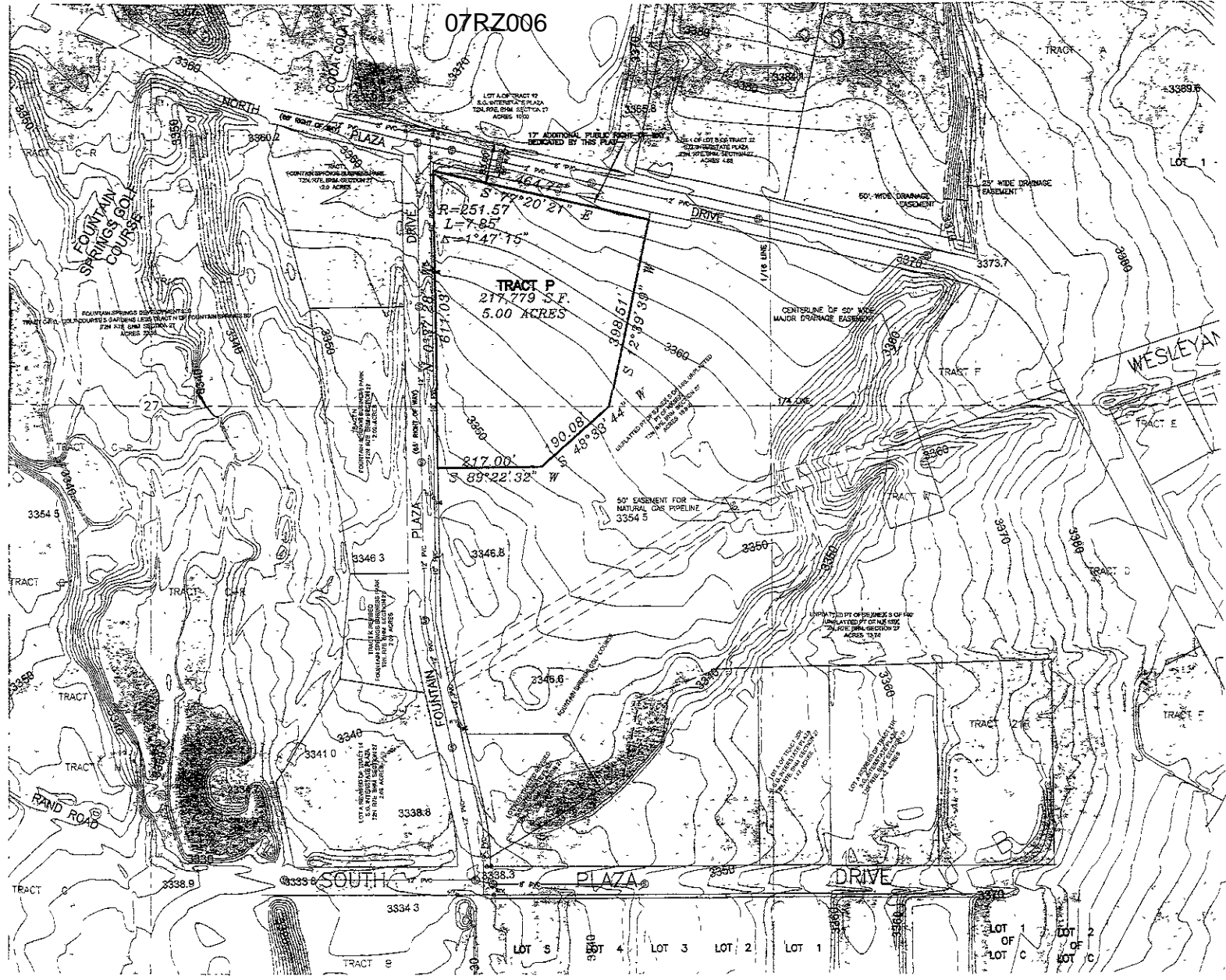
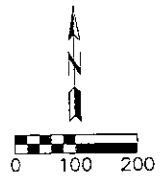


07RZ006



RECEIVED

JAN 1 8 2007

Rapid City Growth Management Department

PROPOSED LOT LAYOUT AT N. PLAZA DRIVE & FOUNTAIN PLAZA DRIVE



1830 West Fulton St
Rapid City, SD 57
Phone: (605) 341-17
Fax: (605) 341-17
www.cetecengineering.com