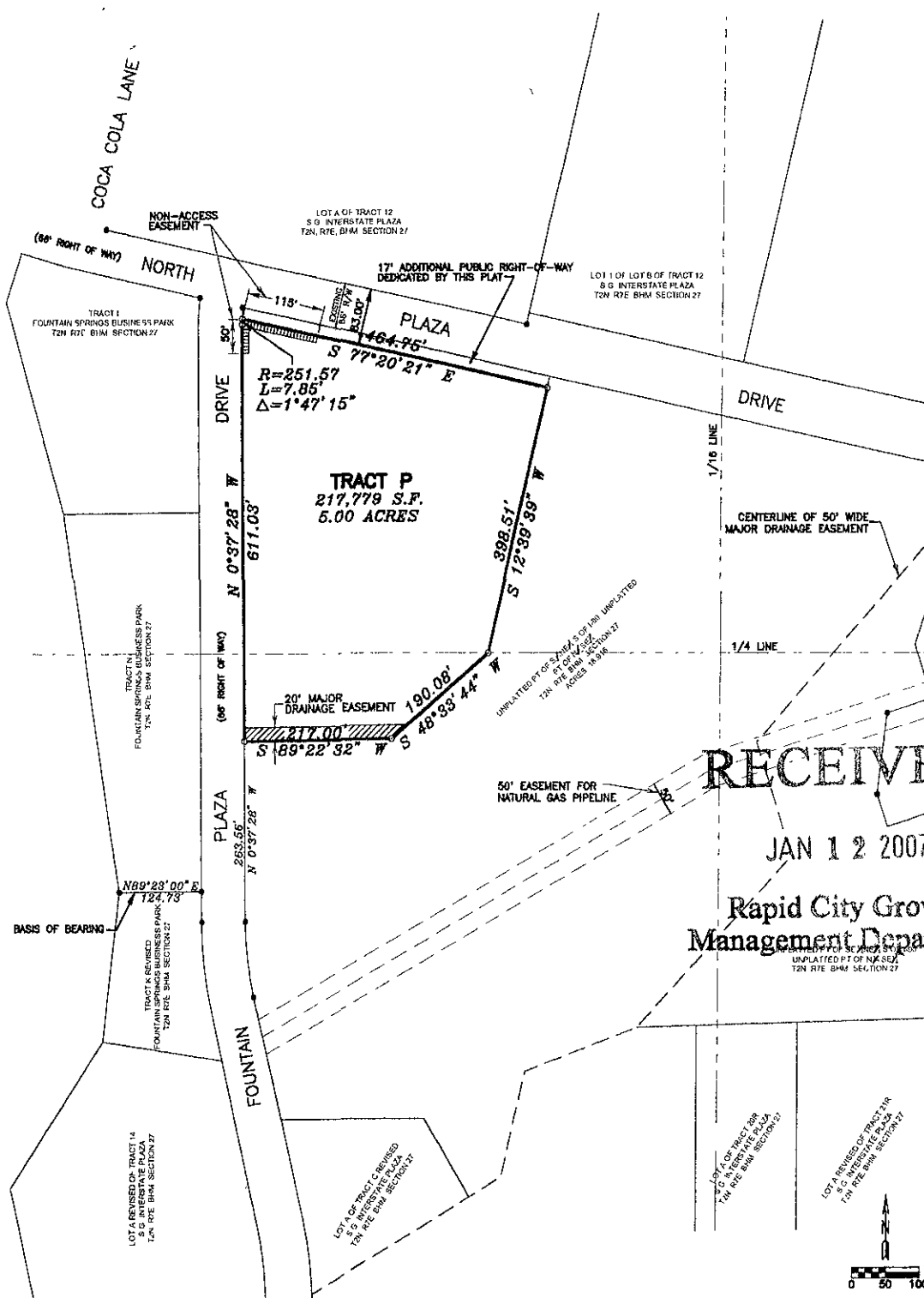


PLAT OF TRACT P OF FOUNTAIN SPRINGS BUSINESS PARK AND DEDICATED PUBLIC RIGHT-OF-WAY FORMERLY PART OF THE UNPLATTED PART OF S 1/2 NE 1/4 S OF I-90; UNPLATTED PART OF N 1/2 SE 1/4 LOCATED IN THE S 1/2 NE 1/4 AND THE N 1/2 SE 1/4 OF SECTION 27, T2N, R7E, B1M, RAPID CITY, PENNINGTON COUNTY, SOUTH DAKOTA



RECEIVED
 JAN 12 2007
 Rapid City Growth
 Management Department

NOTES

All major drainage easements shown hereon shall be kept free of all obstructions including but not limited to buildings, walls, fences, hedges, trees and shrubs. These easements grant to all public authorities the right to construct, operate, maintain, inspect and repair such improvements and structures as it deems expedient to facilitate drainage from any sources.

Building Setback requirements are as stated in the zoning and/or platting regulations.

Utility and Minor Drainage Easements - 5' on the interior side of all front, side and rear lot lines.

Total right-of-way dedicated by this plat: 0.18 acres.

Pursuant to SDCL 8-3-3.1 and 8-3-3.2, The Developer of the property described within this Plat shall be responsible for protecting any waters of the State, including groundwater, located adjacent to or within such plotted area from pollution from sewage from such subdivision and shall in prosecution of such protection conform to and follow all regulations of the state of South Dakota Department of Environment and Natural Resources relating to the same.

- LEGEND**
- SET 5/8" REBAR W/ CAP MARKED CTEC LS 4725
 - SET 5/8" REBAR W/ CAP MARKED CTEC LS 4725 ROW P.C.'s, AND P.T.'s
 - FOUND SURVEY MONUMENT
 - ▬ NON-ACCESS EASEMENT
 - ▨ MAJOR DRAINAGE EASEMENT

