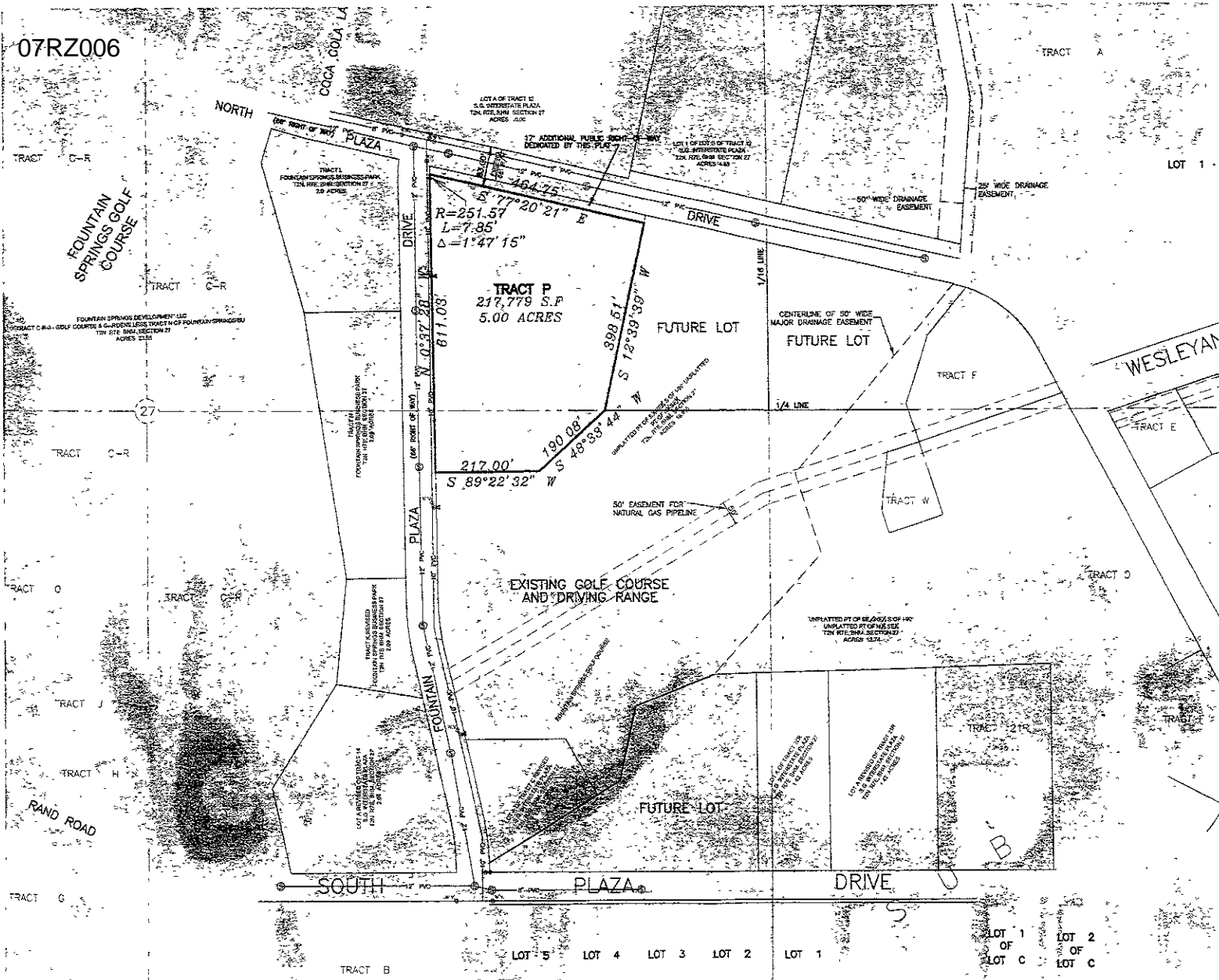
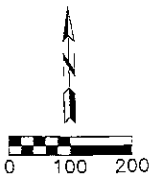


07RZ006



RECEIVED

JAN 12 2007

Rapid City Growth Management Department

PRELIMINARY MASTER PLAN FOR UNPLATTED PART OF S 1/2 NE 1/4 S OF 1- UNPLATTED PART OF N 1/2 SE 1/4 T2N, R7E, B1M SECTION 27 ACRES 18.916 (Remaining)

cetec

ENGINEERING SERVICES, INC.

1830 West Fulton St
Rapid City, SD 57701
Phone (605) 341-7376
Fax (605) 341-7376
www.cetecengr.com