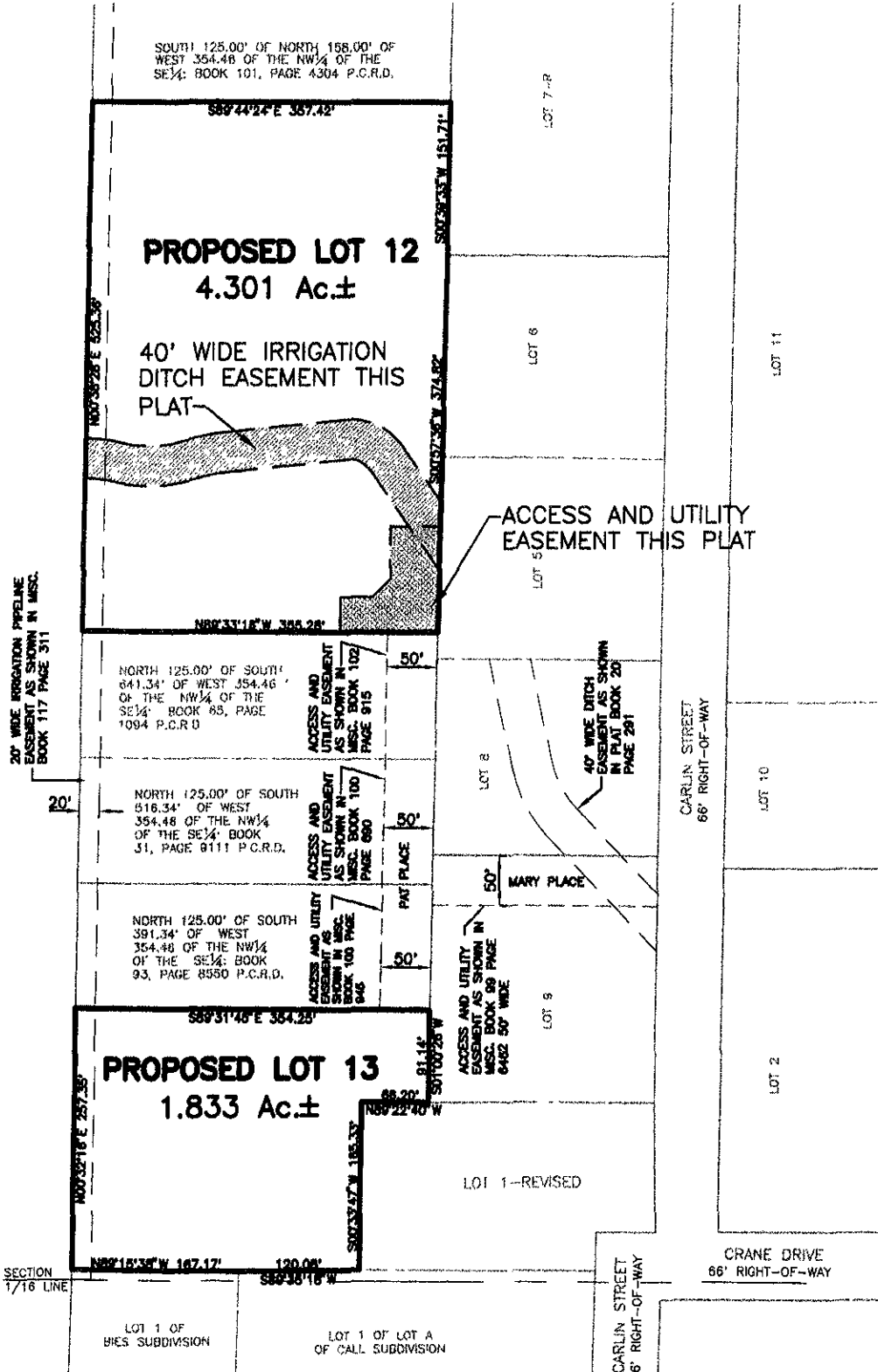


PLAT OF LOTS 12 AND 13, CARLIN SUBDIVISION

(formerly a portion of the NW¹/₄ of the SE¹/₄)
LOCATED IN THE W¹/₂ OF THE NW¹/₄ OF THE SE¹/₄
SECTION 11, T1N, R8E, B.H.M.
PENNINGTON COUNTY, SOUTH DAKOTA



2007



JANUARY 12, 2007
N.T.S.