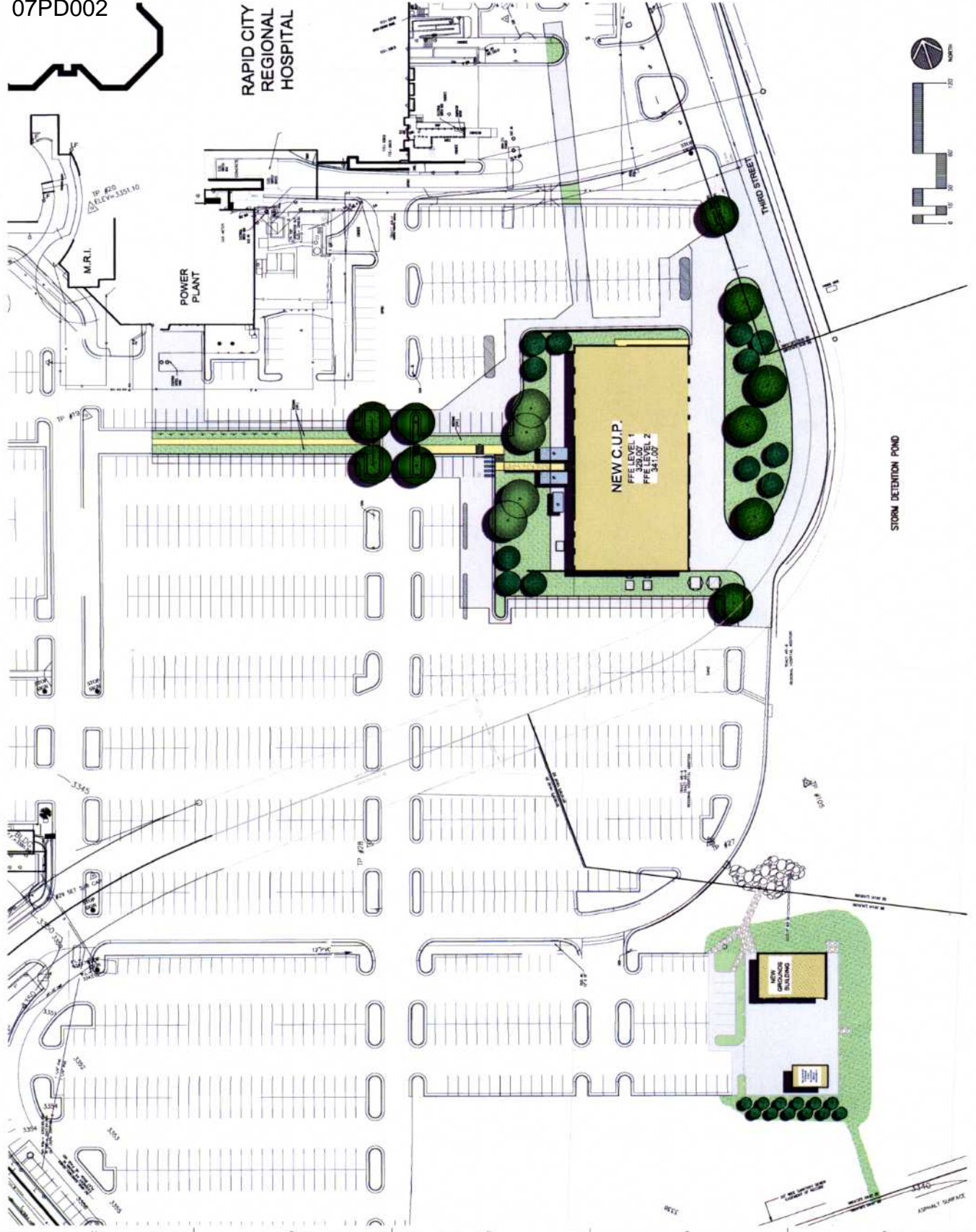


07PD002



RAPID CITY REGIONAL HOSPITAL

RAPID CITY REGIONAL HOSPITAL
RAPID CITY, SOUTH DAKOTA

CENTRAL UTILITY PLANT



1	11-18-07	CD REVIEW SET
2	11-18-07	CD REVIEW SET
3	11-18-07	CD REVIEW SET
4	11-18-07	CD REVIEW SET
5	11-18-07	CD REVIEW SET
6	11-18-07	CD REVIEW SET
7	11-18-07	CD REVIEW SET
8	11-18-07	CD REVIEW SET
9	11-18-07	CD REVIEW SET
10	11-18-07	CD REVIEW SET
11	11-18-07	CD REVIEW SET
12	11-18-07	CD REVIEW SET
13	11-18-07	CD REVIEW SET
14	11-18-07	CD REVIEW SET
15	11-18-07	CD REVIEW SET
16	11-18-07	CD REVIEW SET
17	11-18-07	CD REVIEW SET
18	11-18-07	CD REVIEW SET
19	11-18-07	CD REVIEW SET
20	11-18-07	CD REVIEW SET
21	11-18-07	CD REVIEW SET
22	11-18-07	CD REVIEW SET
23	11-18-07	CD REVIEW SET
24	11-18-07	CD REVIEW SET
25	11-18-07	CD REVIEW SET
26	11-18-07	CD REVIEW SET
27	11-18-07	CD REVIEW SET
28	11-18-07	CD REVIEW SET
29	11-18-07	CD REVIEW SET
30	11-18-07	CD REVIEW SET
31	11-18-07	CD REVIEW SET
32	11-18-07	CD REVIEW SET
33	11-18-07	CD REVIEW SET
34	11-18-07	CD REVIEW SET
35	11-18-07	CD REVIEW SET
36	11-18-07	CD REVIEW SET
37	11-18-07	CD REVIEW SET
38	11-18-07	CD REVIEW SET
39	11-18-07	CD REVIEW SET
40	11-18-07	CD REVIEW SET
41	11-18-07	CD REVIEW SET
42	11-18-07	CD REVIEW SET
43	11-18-07	CD REVIEW SET
44	11-18-07	CD REVIEW SET
45	11-18-07	CD REVIEW SET
46	11-18-07	CD REVIEW SET
47	11-18-07	CD REVIEW SET
48	11-18-07	CD REVIEW SET
49	11-18-07	CD REVIEW SET
50	11-18-07	CD REVIEW SET
51	11-18-07	CD REVIEW SET
52	11-18-07	CD REVIEW SET
53	11-18-07	CD REVIEW SET
54	11-18-07	CD REVIEW SET
55	11-18-07	CD REVIEW SET
56	11-18-07	CD REVIEW SET
57	11-18-07	CD REVIEW SET
58	11-18-07	CD REVIEW SET
59	11-18-07	CD REVIEW SET
60	11-18-07	CD REVIEW SET
61	11-18-07	CD REVIEW SET
62	11-18-07	CD REVIEW SET
63	11-18-07	CD REVIEW SET
64	11-18-07	CD REVIEW SET
65	11-18-07	CD REVIEW SET
66	11-18-07	CD REVIEW SET
67	11-18-07	CD REVIEW SET
68	11-18-07	CD REVIEW SET
69	11-18-07	CD REVIEW SET
70	11-18-07	CD REVIEW SET
71	11-18-07	CD REVIEW SET
72	11-18-07	CD REVIEW SET
73	11-18-07	CD REVIEW SET
74	11-18-07	CD REVIEW SET
75	11-18-07	CD REVIEW SET
76	11-18-07	CD REVIEW SET
77	11-18-07	CD REVIEW SET
78	11-18-07	CD REVIEW SET
79	11-18-07	CD REVIEW SET
80	11-18-07	CD REVIEW SET
81	11-18-07	CD REVIEW SET
82	11-18-07	CD REVIEW SET
83	11-18-07	CD REVIEW SET
84	11-18-07	CD REVIEW SET
85	11-18-07	CD REVIEW SET
86	11-18-07	CD REVIEW SET
87	11-18-07	CD REVIEW SET
88	11-18-07	CD REVIEW SET
89	11-18-07	CD REVIEW SET
90	11-18-07	CD REVIEW SET
91	11-18-07	CD REVIEW SET
92	11-18-07	CD REVIEW SET
93	11-18-07	CD REVIEW SET
94	11-18-07	CD REVIEW SET
95	11-18-07	CD REVIEW SET
96	11-18-07	CD REVIEW SET
97	11-18-07	CD REVIEW SET
98	11-18-07	CD REVIEW SET
99	11-18-07	CD REVIEW SET
100	11-18-07	CD REVIEW SET

NOT FOR CONSTRUCTION

OVERALL SITE PLAN



07PD002



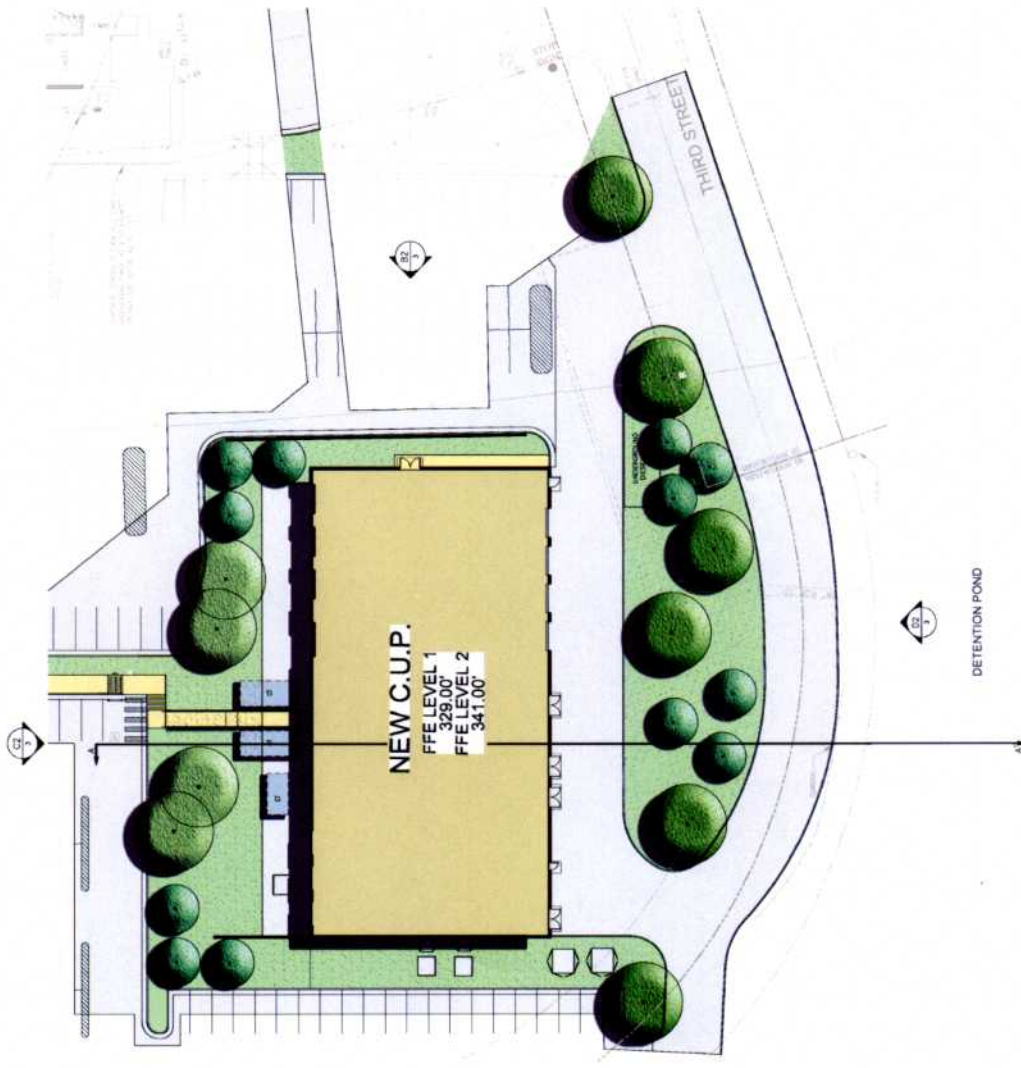
RAPID CITY REGIONAL HOSPITAL
RAPID CITY, SOUTH DAKOTA

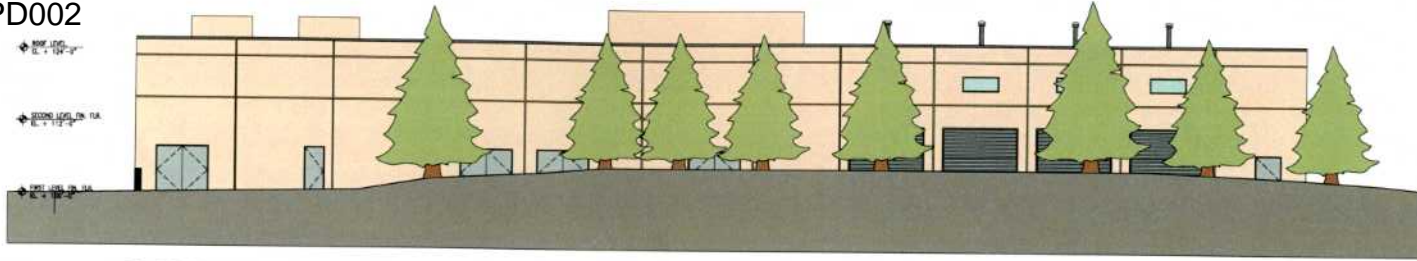
CENTRAL UTILITY PLANT

1	11-28-17	REVISION 07
2	11-12-18	DESIGN DEVELOPMENT
3	02-18-18	SECURITY STUDY
4	04-11-17	ISSUES/NOTES
PROJECT NUMBER: 18-101-002		
PROJECT NAME: CENTRAL UTILITY PLANT		
PROJECT LOCATION: 1000 N. SALISBURY STREET, RAPID CITY, SD 57701		
ARCHITECT: HDR		
STRUCTURAL: HDR		
MECHANICAL: HDR		
ELECTRICAL: HDR		
PLUMBING: HDR		
OWNER: RAPID CITY		

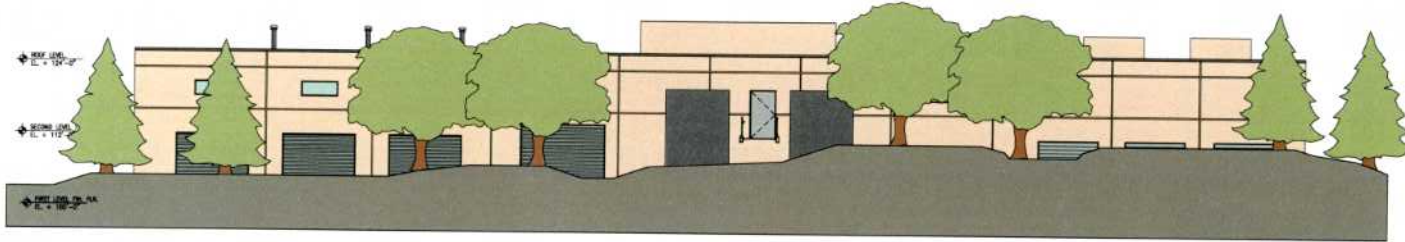
NOT FOR CONSTRUCTION

CENTRAL UTILITY PLANT
PLAN / SECTION

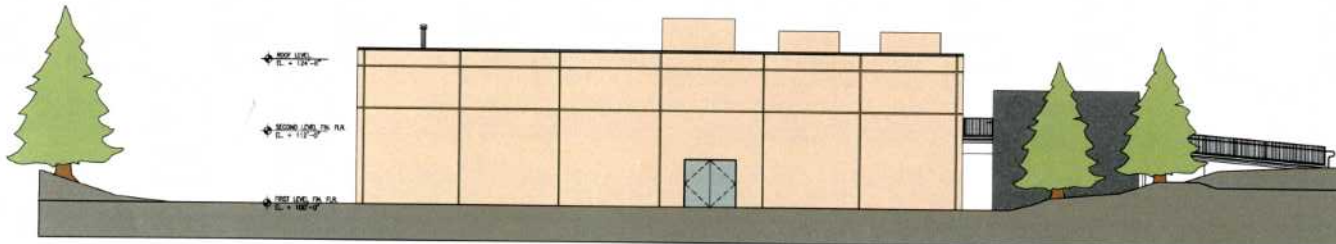




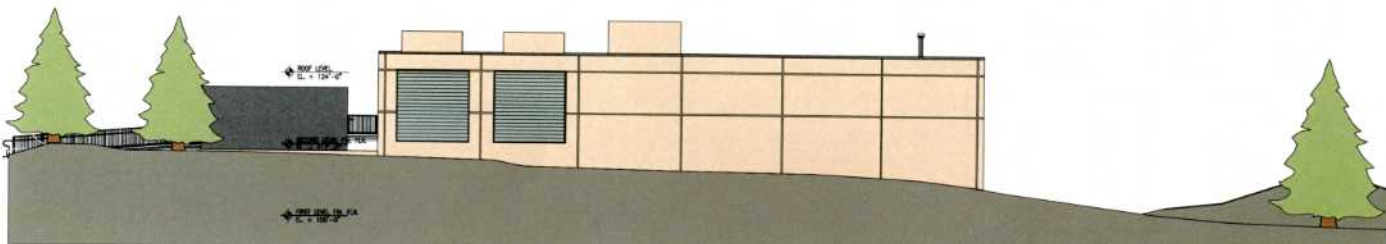
D2 EAST ELEVATION
1/8" = 1'-0"



C2 WEST ELEVATION
1/8" = 1'-0"



B2 NORTH ELEVATION
1/8" = 1'-0"



A2 SOUTH ELEVATION
1/8" = 1'-0"



CENTRAL
UTILITY PLANT

DATE	DATE	DESCRIPTION
3	01-08-07	CD REVIEW SET
2	11-13-06	ISSUE DEVELOPMENT
1	08-18-06	SCHEMATIC DESIGN

PROJECT NUMBER	07PD-0102-0101-002
PROJECT MANAGER	Steve Hoffman
PROJECT ARCHITECT	Deanna Mueller
SITE	Tray Station
STRUCTURING	Chris Johnson
MEDICAL	Chris Palmer
ELECTRICAL	David Hale
MECHANICAL	Janis Stange
PLUMBING	Christie Spitzer

NOT FOR CONSTRUCTION

ELEVATIONS



SCALE 1/8" = 1'-0"