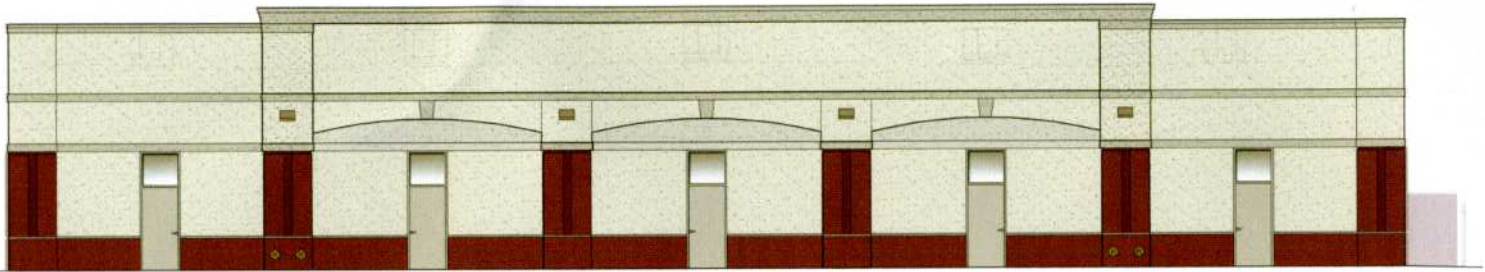


**FRONT ELEVATION (EAST) WALL**

SCALE: 1/8" = 1'-0"



**REAR ELEVATION (WEST WALL)**

SCALE: 1/8" = 1'-0"



**SOUTH SIDE WALL ELEVATION**

SCALE: 1/8" = 1'-0"



**NORTH SIDE WALL ELEVATION**

SCALE: 1/8" = 1'-0"

