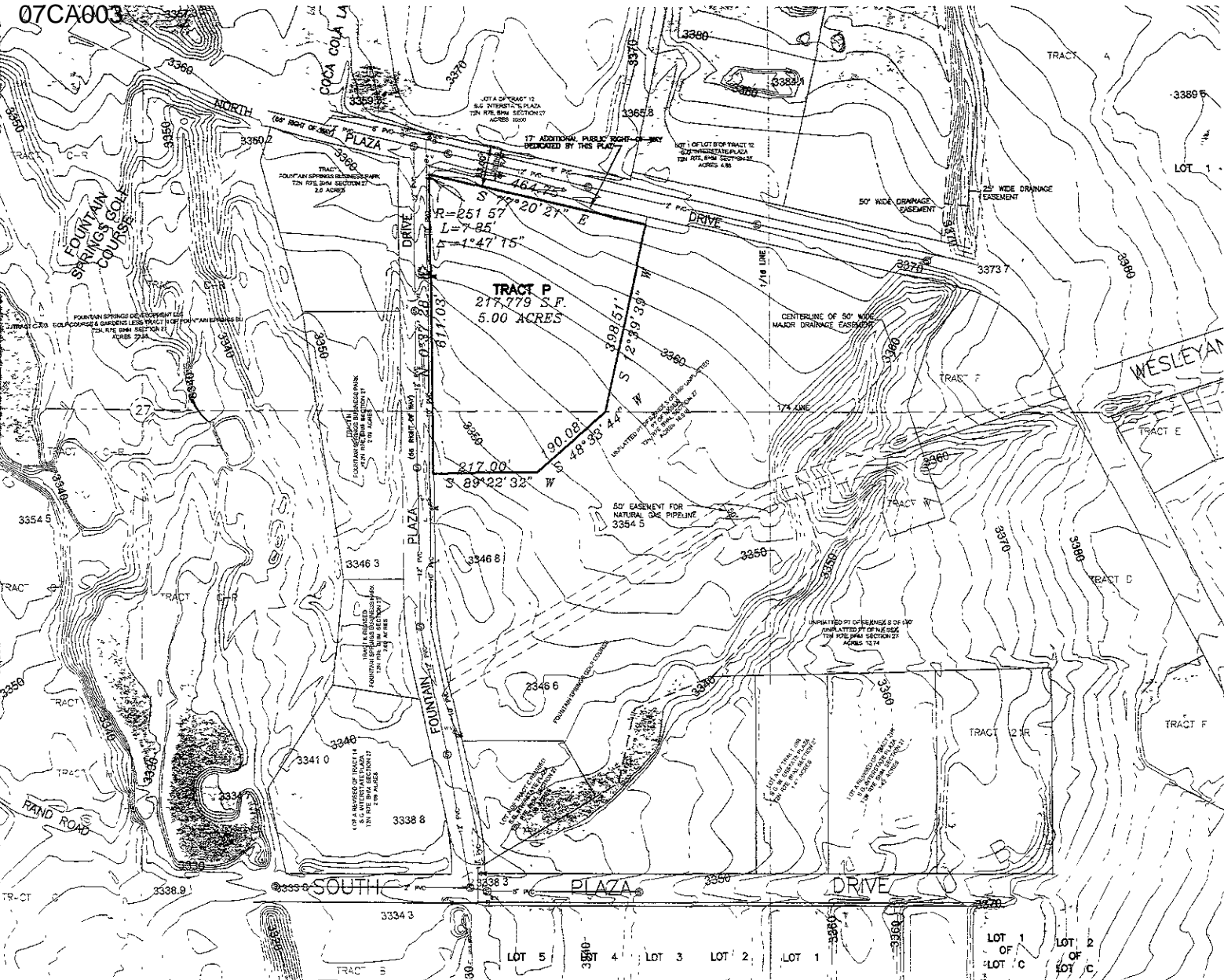


07CA003



RECEIVED

JAN 12 2007

Rapid City Growth Management Department

PROPOSED LOT LAYOUT AT N. PLAZA DRIVE & FOUNTAIN PLAZA DRIVE

cetec
ENGINEERING SERVICES, INC.

1830 West Fulton Street
Rapid City, SD 57701
Phone (605) 341-7800
Fax (605) 341-7800
www.cetecengineering.com