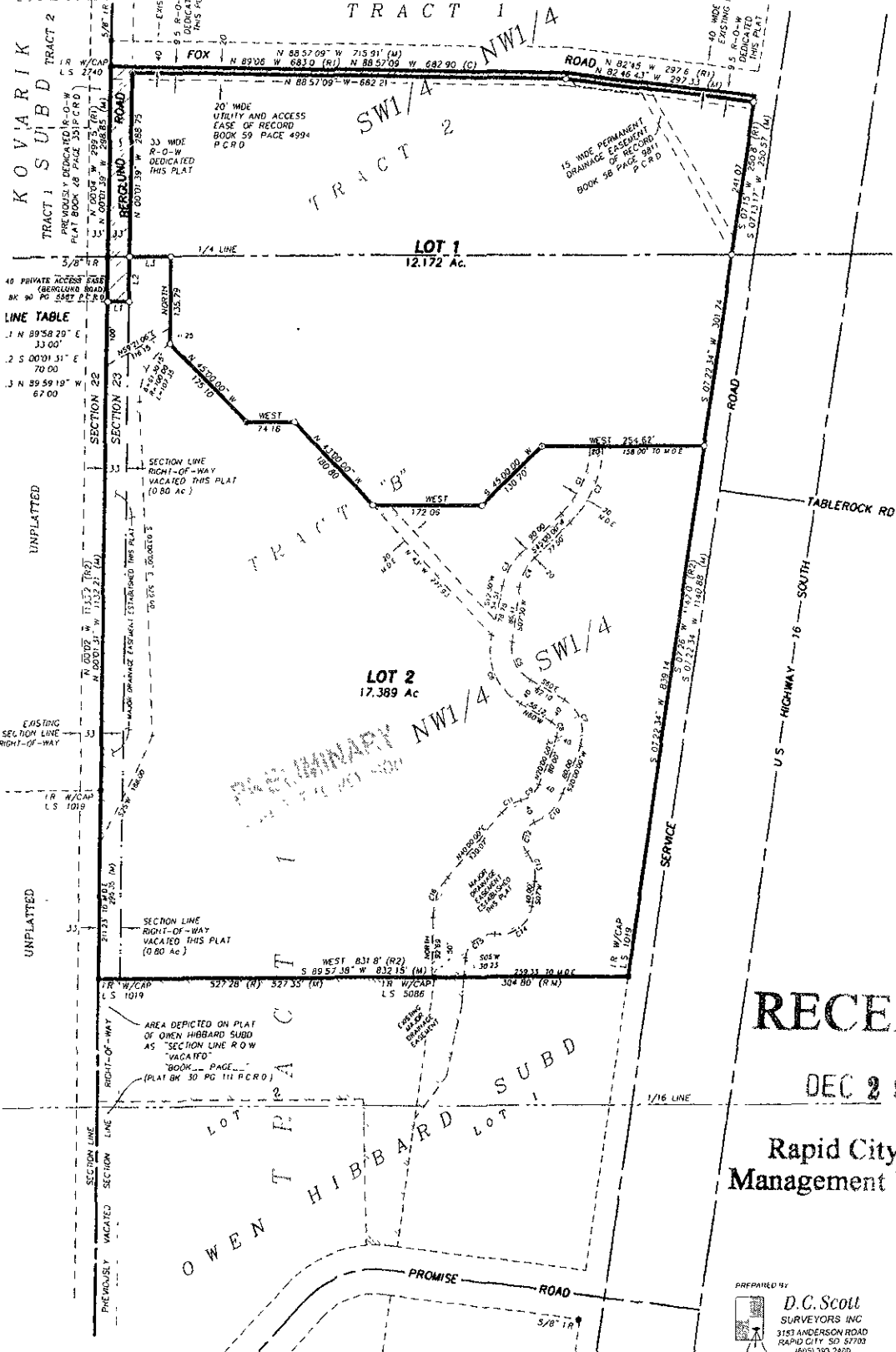
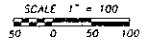


**PRELIMINARY PLAT OF
 LOT 1 AND LOT 2 OF IGT SUBDIVISION,
 AND 33 FEET OF BERGLUND ROAD DEDICATED RIGHT-OF-WAY,
 AND 9.5 FEET OF FOX ROAD DEDICATED RIGHT-OF-WAY,
 (FORMERLY TRACT "B" OF TRACT 1 OF THE W1/2 SW1/4 OF SECTION 23
 AND TRACT 2 OF THE SW1/4 NW1/4 OF SECTION 23),
 LOCATED IN THE NW1/4 SW1/4 AND SW1/4 NW1/4 OF SECTION 23,
 TOWNSHIP 1 NORTH, RANGE 7 EAST OF THE BLACK HILLS MERIDIAN,
 RAPID CITY, PENNINGTON COUNTY, SOUTH DAKOTA.**

DECEMBER, 2006



LINE TABLE

1	N 89°58'20" E	33.00'
2	S 00°01'31" E	70.00'
3	N 89°59'19" W	67.00'

RECEIVED

DEC 29 2006

Rapid City Growth Management Department

PREPARED BY
D.C. Scott
 SURVEYORS, INC.
 3151 ANDERSON ROAD
 RAPID CITY, SD 57703
 (605) 393 2400