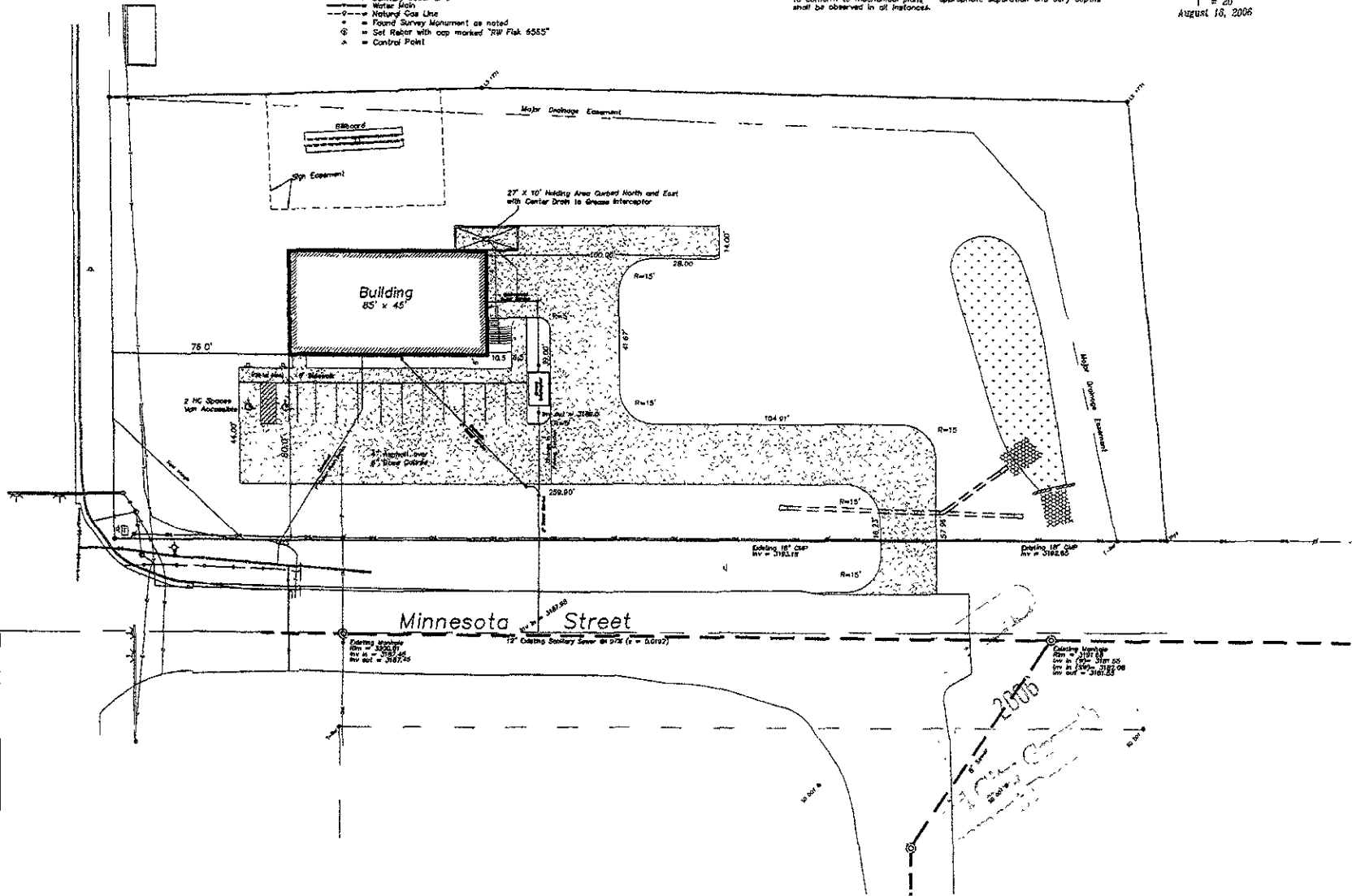
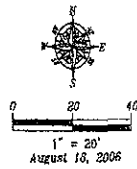


US Highway 79

- LEGEND**
- ⊙ = Sanitary Sewer Manhole (Unless noted)
  - ⊕ = Sanitary Sewer Service Line Checkout
  - ⊖ = Fire Hydrant
  - ⊙ = Water Valve
  - ⊙ = Curb Stop
  - ⊙ = Utility Pole
  - ⊙ = Electric Vault
  - ⊙ = Traffic Light
  - ⊙ = Telecommunications Vault
  - ⊙ = Sign
  - = Underground Electric
  - = Overhead Utility Line
  - = Underground Telecommunications Line
  - = Fiber Optic Line
  - = Sanitary Sewer Line
  - = Water Main
  - = Natural Gas Line
  - ⊙ = Found Survey Monument as noted
  - ⊙ = Set Rebar with cap marked "RW Flak 6555"
  - ⊙ = Control Point

**ENGINEER'S NOTES**

Site work shown herein shall be in accordance with the City of Rapid City Standard Specifications for Public Works Construction - 2004 Edition (as revised).  
 All signage within the ROW shall be in accordance with the MUTCD  
 Contractor shall be responsible for obtaining all required permits.  
 Actual locating locations and inverts of water and sewer services may be altered to conform to mechanical plans - appropriate separation and bury depths shall be observed in all instances.



**SITE PLAN**  
 Piedmont Processing  
 Lot A of Tract 2 of Kormylo Subdivision  
 SW1/4 NW1/4 Sec. 17, T1N, R8E, B.H.M.  
 Rapid City, Pennington County, South Dakota

1022 1/2th Street  
 P.O. Box 8164  
 Rapid City, South Dakota  
 57709  
 (605) 348-1338  
 (605) 341-1112 (fx)

**Fisk Land Surveying  
 & Consulting  
 Engineers, Inc.**



Surveyed by RLH  
 Date 8/15/06  
 Drawn by RNF  
 Date 8/18/06  
 Checked by WF  
 Revisions

Project No.  
 06-08-06  
 Sheet  
 3  
 of  
 5