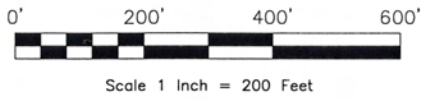


PLAT OF F & N SUBDIVISION

TRACT A

FORMERLY THE UNPLATTED PORTION OF THE N $\frac{1}{2}$ OF THE SW $\frac{1}{4}$, SECTION 3, T.1N., R.8E.,
B.H.M., RAPID CITY, PENNINGTON COUNTY, SOUTH DAKOTA

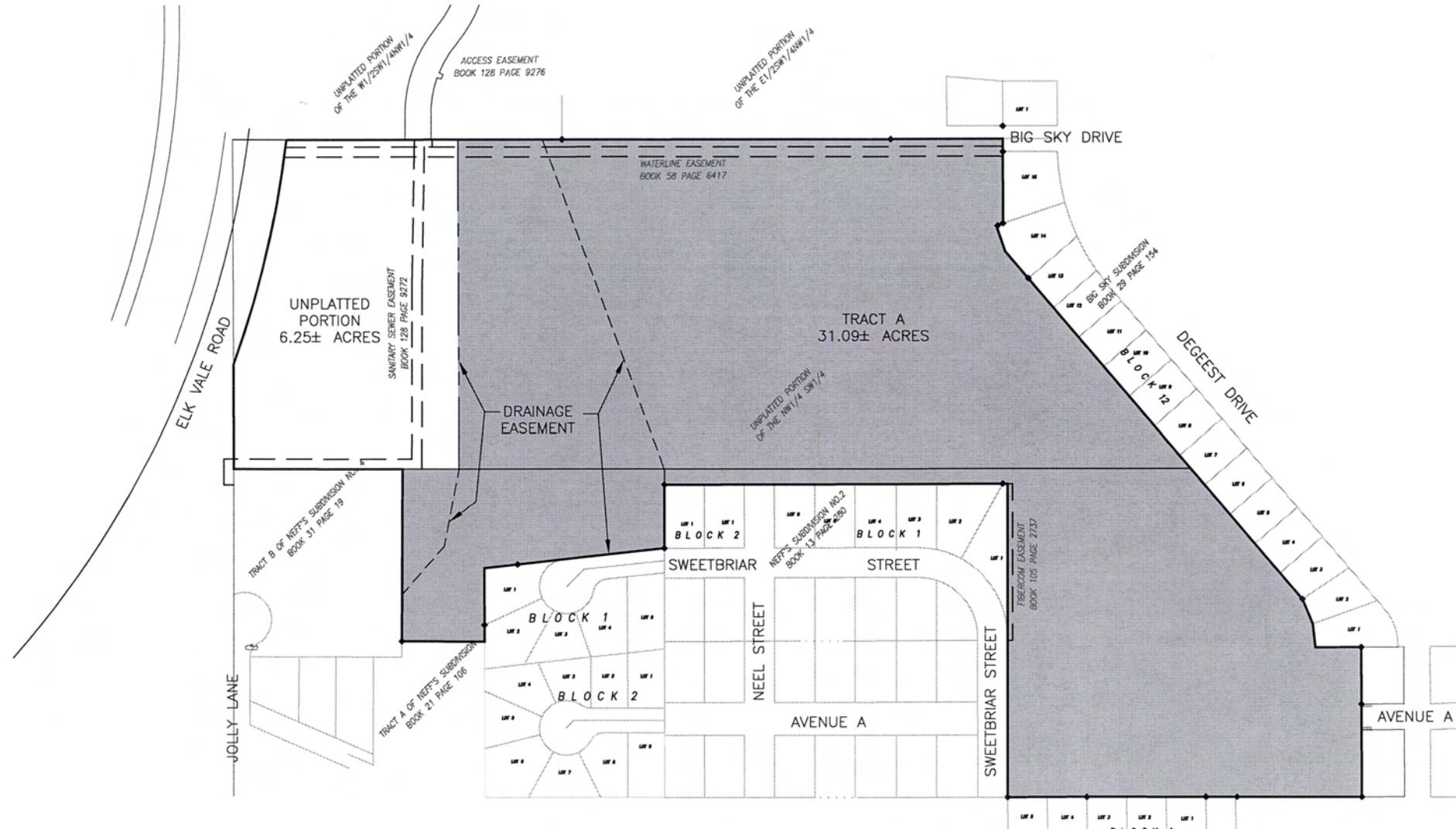


LEGEND

- Denotes set 5/8" rebar with survey cap marked "ARLETH 3977"
- ⊙ Denotes Found Survey Monument

NOTES:

1. TOTAL PLATTED AREA: 31.09± ACRES



PRELIMINARY



PREPARED BY:
**ARLETH &
ASSOCIATES**

25 KIRK ROAD
DEADWOOD, SD 57732
605-578-1637

JOB NO.
06-0440

DATE: JANUARY 26, 2007
SCALE: 1" = 200'
DRAWN: TT

APPROVED: JMA
DWC: Prelim Plat

PREPARED FOR:
DREAM DESIGN INTERNATIONAL, INC.
528 KANSAS CITY STREET, SUITE 4
RAPID CITY, SOUTH DAKOTA 57701
(605) 348-0538