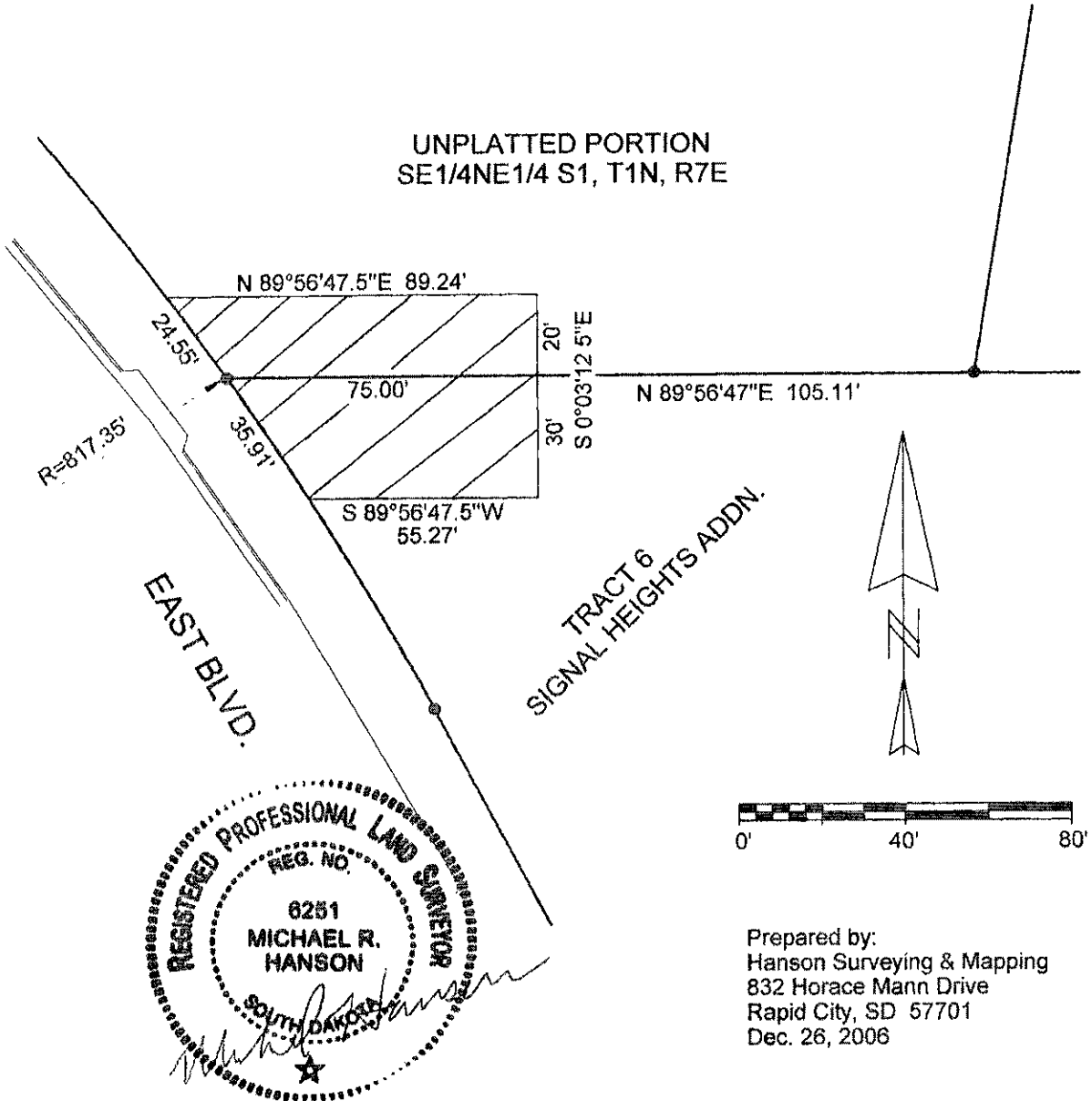


EXHIBIT A

COMMON ACCESS EASEMENT

UNPLATTED PORTION OF SE1/4NE1/4 OF SECTION 1, T1N, R7E,
AND TRACT 6 OF SIGNAL HEIGHTS ADDITION
RAPID CITY, PENNINGTON COUNTY, SOUTH DAKOTA



Prepared by:
Hanson Surveying & Mapping
832 Horace Mann Drive
Rapid City, SD 57701
Dec. 26, 2006