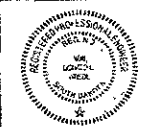




TSP Inc. Inc.  
600 Kansas City Street  
Rapid City, SD 57701  
Phone (605) 245-8100  
Fax (605) 245-7194  
www.teamtsp.com

Architect  
Landscape  
Landscape

CONSULTOR



PROJECT TITLE



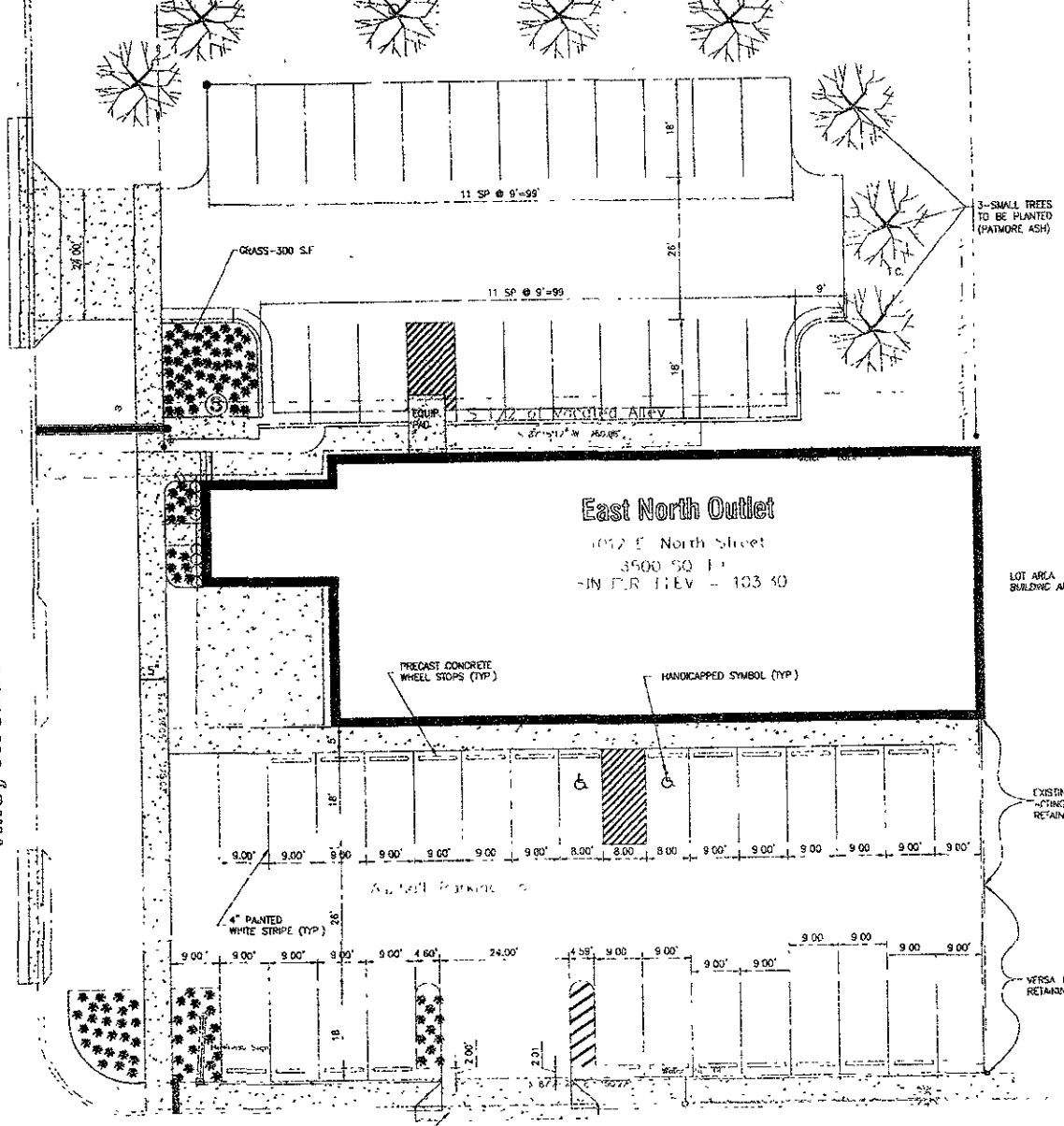
East North Plaza  
Rapid City, South Dakota

DATE DESCRIPTION

PROJECT NUMBER  
DRAWN BY  
CHECKED BY

EXISTING SITE LAYOUT

Riley Avenue



3 SMALL TREES TO BE PLANTED (PATERMORE ASH)

LOT AREA BUILDING AREA

EXISTING FOUNDATION WALL - FORMING AS PART OF LOT RETAINING WALL

VERSALOCK RETAINING WALL

East North Outlet  
1012 E North Street  
3500 SQ FT  
- IN CUR TREV - 103 X0

PRECAST CONCRETE WHEEL STOPS (TYP)

HANDICAPPED SYMBOL (TYP)

4" PAINTED WHITE STRIPE (TYP)

East North Street

RECEIVED

DEC 20 2006

Rapid City Growth Management Department