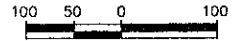
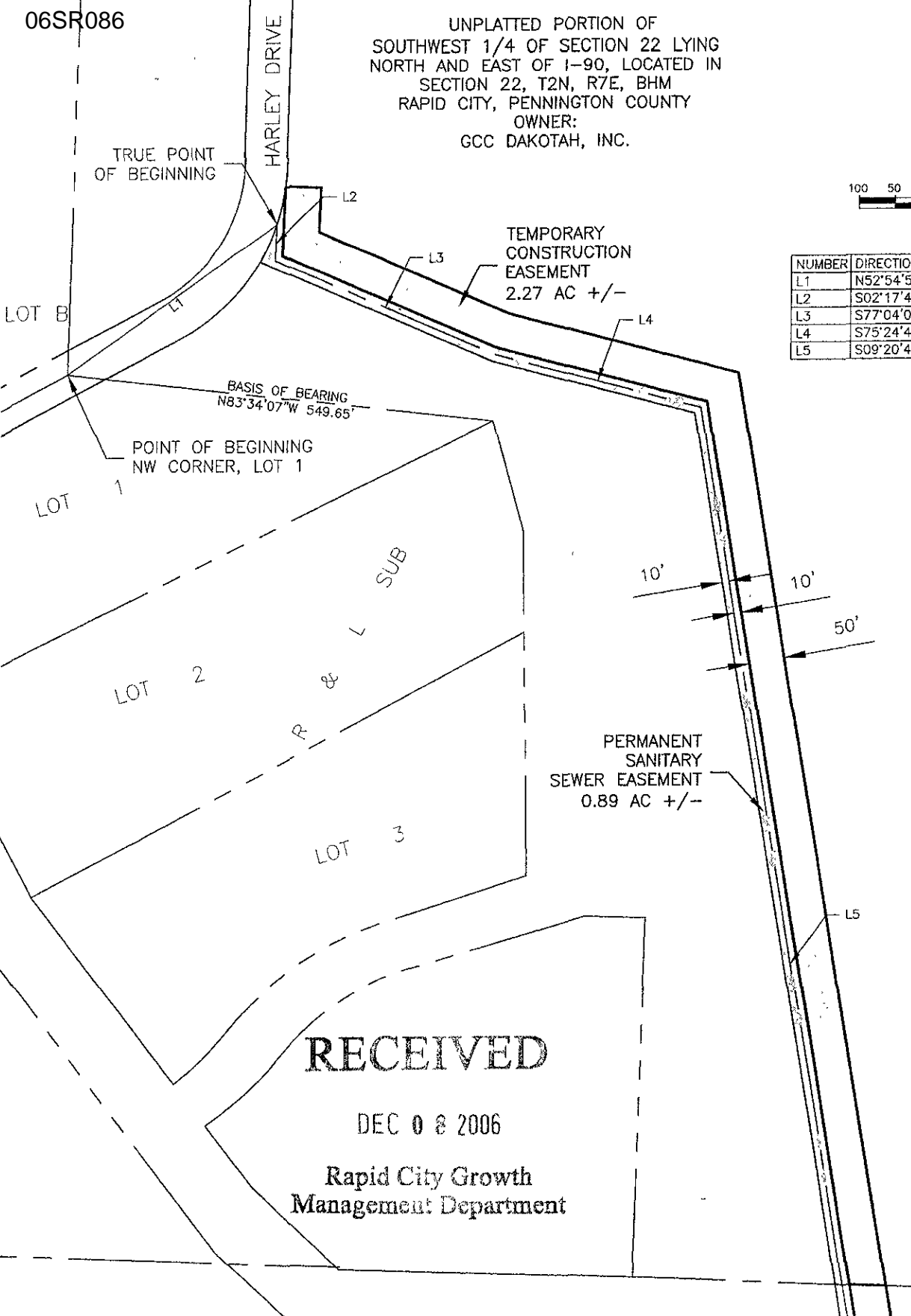


06SR086

UNPLATTED PORTION OF
SOUTHWEST 1/4 OF SECTION 22 LYING
NORTH AND EAST OF I-90, LOCATED IN
SECTION 22, T2N, R7E, BHM
RAPID CITY, PENNINGTON COUNTY
OWNER:
GCC DAKOTA, INC.



NUMBER	DIRECTION	DISTANCE
L1	N52°54'53"E	374.57'
L2	S02°17'41"W	50.85'
L3	S77°04'01"E	338.28'
L4	S75°24'42"E	299.39'
L5	S09°20'45"E	1239.21'



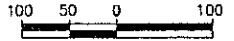
RECEIVED

DEC 08 2006

Rapid City Growth
Management Department

SECTION 22
SECTION 27

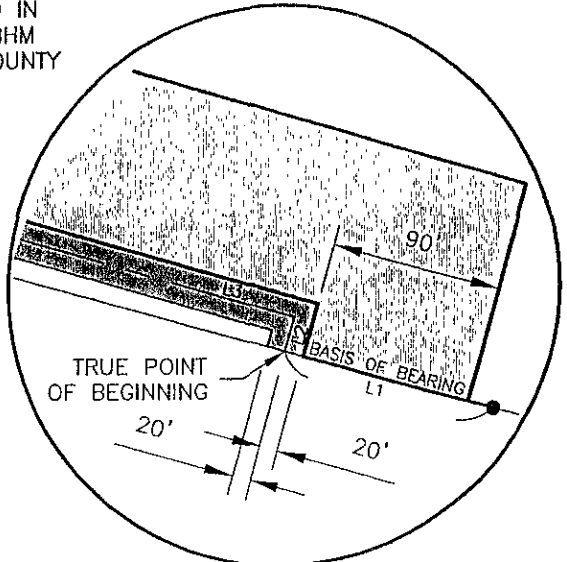
NUMBER	DIRECTION	DISTANCE
L1	S74°39'04"E	113.55'
L2	N15°05'51"E	18.72'
L3	S74°03'20"E	553.76'
L4	S17°59'33"E	355.45'
L5	S09°20'45"E	504.69'



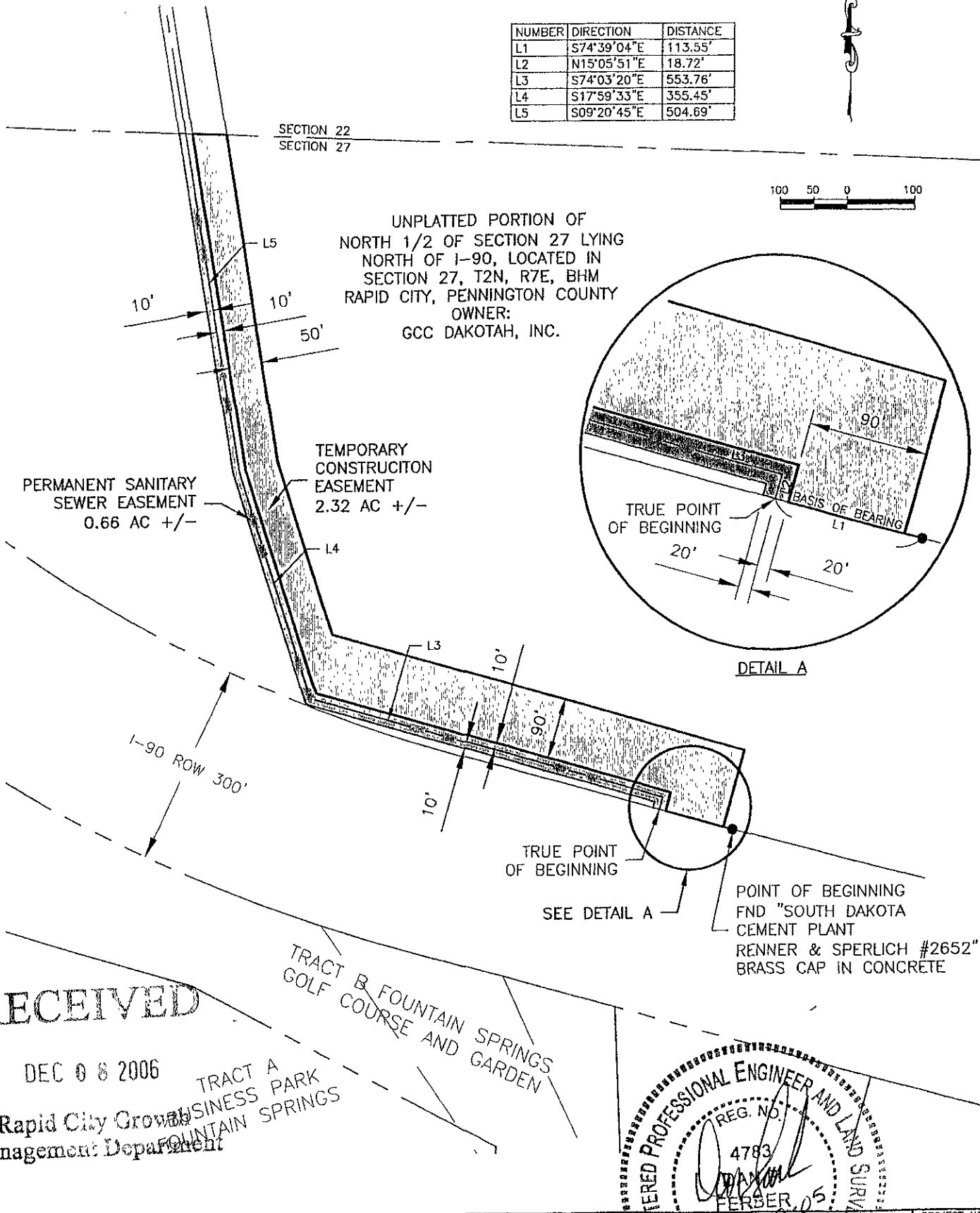
UNPLATTED PORTION OF
NORTH 1/2 OF SECTION 27 LYING
NORTH OF I-90, LOCATED IN
SECTION 27, T2N, R7E, BHM
RAPID CITY, PENNINGTON COUNTY
OWNER:
GCC DAKOTA, INC.

PERMANENT SANITARY
SEWER EASEMENT
0.66 AC +/-

TEMPORARY CONSTRUCTION
EASEMENT
2.32 AC +/-



DETAIL A



RECEIVED

DEC 08 2006

Rapid City Growth
Management Department

TRACT A
BUSINESS PARK
FOUNTAIN SPRINGS

TRACT B FOUNTAIN SPRINGS
GOLF COURSE AND GARDEN

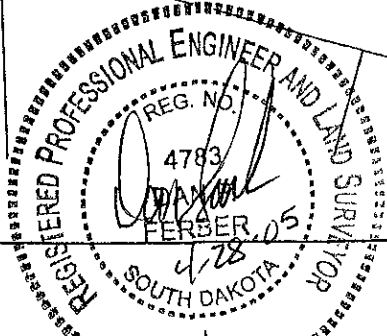
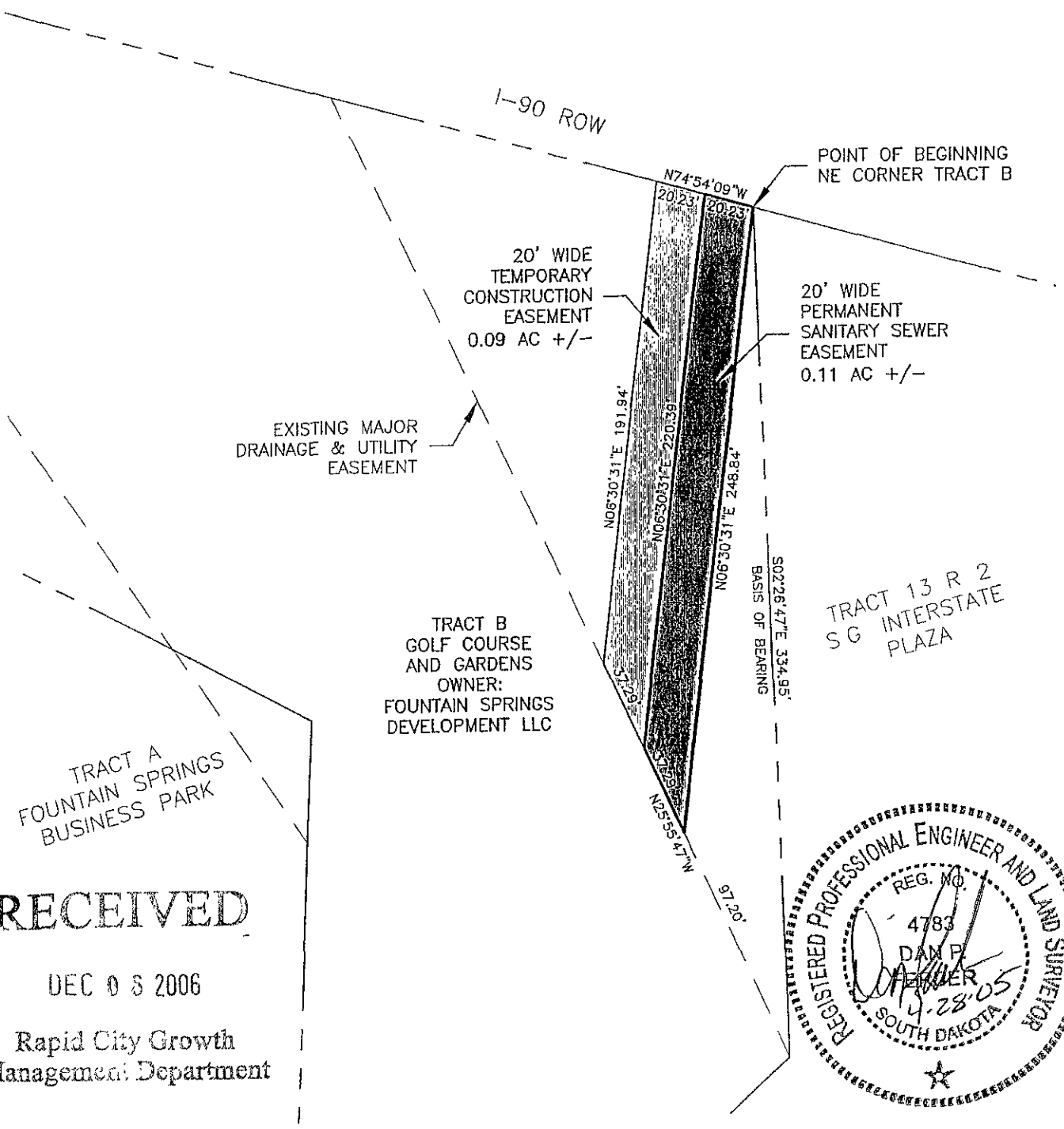
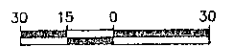


EXHIBIT A

PROJECT NO.
J02-130
FIGURE NO.
1 OF 1



RECEIVED

DEC 08 2006

Rapid City Growth Management Department

