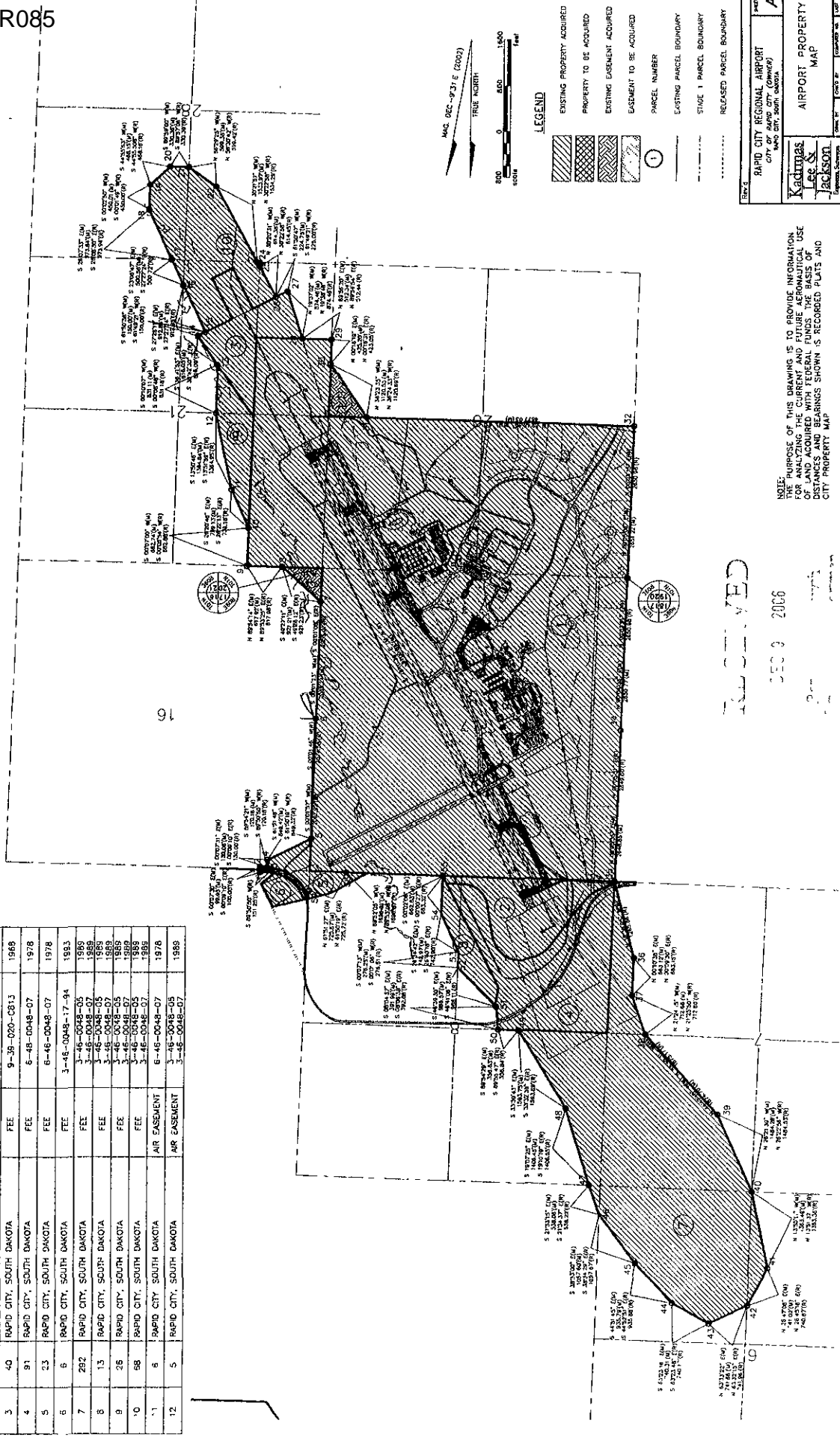


PARCEL NUMBER	AREA (ACRES)	CURRENT PROPERTY OWNER	TYPE OF ACQUISITION	ACQUIRED UNDER PROJECT NO.	YEAR ACQUIRED
1	11.04	RAPID CITY, SOUTH DAKOTA	FEE	9-35-020-801	1948
2	51	RAPID CITY, SOUTH DAKOTA	FEE	9-38-020-0712	1967
3	40	RAPID CITY, SOUTH DAKOTA	FEE	9-38-020-0813	1968
4	91	RAPID CITY, SOUTH DAKOTA	FEE	6-48-0048-07	1978
5	23	RAPID CITY, SOUTH DAKOTA	FEE	6-46-0048-07	1978
6	6	RAPID CITY, SOUTH DAKOTA	FEE	3-45-0048-77-94	1983
7	292	RAPID CITY, SOUTH DAKOTA	FEE	3-46-0048-05	1989
8	13	RAPID CITY, SOUTH DAKOTA	FEE	3-46-0048-07	1989
9	26	RAPID CITY, SOUTH DAKOTA	FEE	3-45-0048-07	1989
10	58	RAPID CITY, SOUTH DAKOTA	FEE	3-46-0048-05	1989
11	6	RAPID CITY, SOUTH DAKOTA	AIR EASEMENT	6-46-0048-07	1978
12	5	RAPID CITY, SOUTH DAKOTA	AIR EASEMENT	3-45-0048-07	1988



NOTE: THE PURPOSE OF THIS DRAWING IS TO PROVIDE INFORMATION OF THE ACQUISITION OF THE CURRENT AND FUTURE LEGAL USE OF AIRPORT PROPERTY. THIS DRAWING IS NOT TO BE USED FOR DISTANCES AND BEARINGS SHOWN IS RECORDED PLATS AND CITY PROPERTY MAP.

RECORDED

DEC 9 2016

Sheet No. **A-9**

RAPID CITY REGIONAL AIRPORT
CITY OF RAPID CITY (OWNER)

MAP OF CITY, SOUTH DAKOTA

Map of Rapid City, South Dakota

City of Rapid City, South Dakota

City Engineer