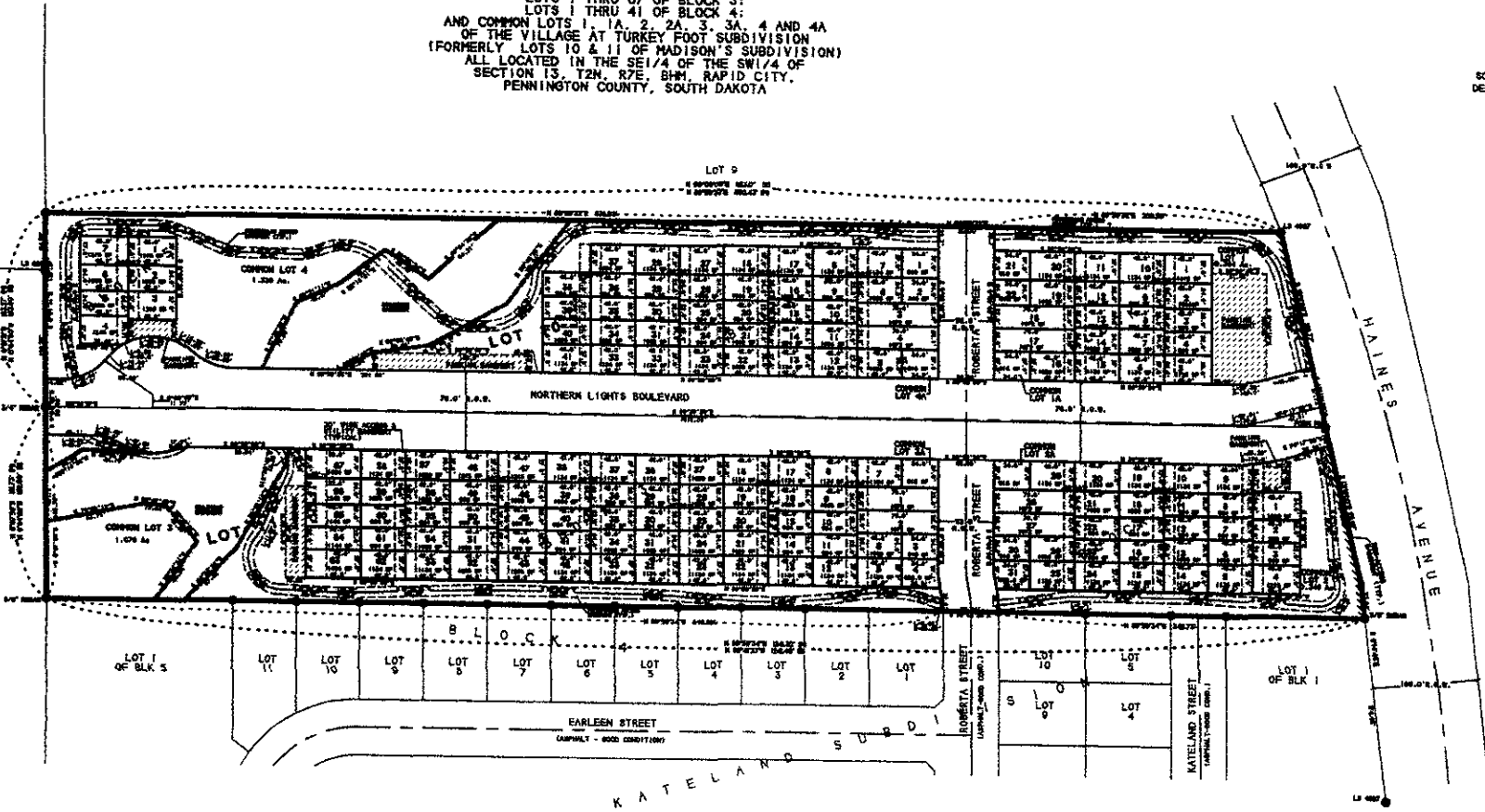


PRELIMINARY PLAT
 OF
 LOTS 1 THRU 21 OF BLOCK 1;
 LOTS 1 THRU 311 OF BLOCK 2;
 LOTS 1 THRU 67 OF BLOCK 3;
 LOTS 1 THRU 41 OF BLOCK 4;
 AND COMMON LOTS 1, 1A, 2, 2A, 3, 3A, 4 AND 4A
 OF THE VILLAGE AT TURKEY FOOT SUBDIVISION
 (FORMERLY LOTS 10 & 11 OF MADISON'S SUBDIVISION)
 ALL LOCATED IN THE SE1/4 OF THE SW1/4 OF
 SECTION 13, T2N, R7E, BHM, RAPID CITY,
 PENNINGTON COUNTY, SOUTH DAKOTA

SCALE: 1" = 50'
 DECEMBER 4, 2006

LOT 1 OF BLOCK 1 OF THE CHERRY LANE SUBDIVISION

0.1 ACRES (21,420 S.F.) LESS 33' STRIP ALONG WEST & SOUTH SIDES OF SECTION 13



AREA DEDICATED TO PUBLIC RIGHT OF WAY (R.O.W.)

NORTHERN LIGHTS BOULEVARD	2 130 AC.
ROBERTA STREET	0 346 AC.
TOTAL	2 466 AC.

BRITTON ENGINEERING & LAND SURVEYING, INC
 8035 BLACK HAWK ROAD, SUITE #5
 BLACK HAWK, SD 57718
 PH. (605) 716-7988

LOTS 10 & 11 OF MADISON'S SUB-
 DIVISION LOCATED IN SE1/4 OF THE SW1/4 OF
 SEC 13, T2N, R7E, BHM, RAPID CITY
 PENNINGTON COUNTY, SOUTH DAKOTA

PRELIMINARY PLAT
 THE VILLAGE AT TURKEY FOOT SUB.

Project No.	06-2009
Client	
Surveyed By	
Checked By	
Drawn By	
Date	