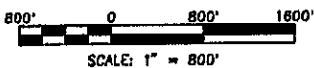
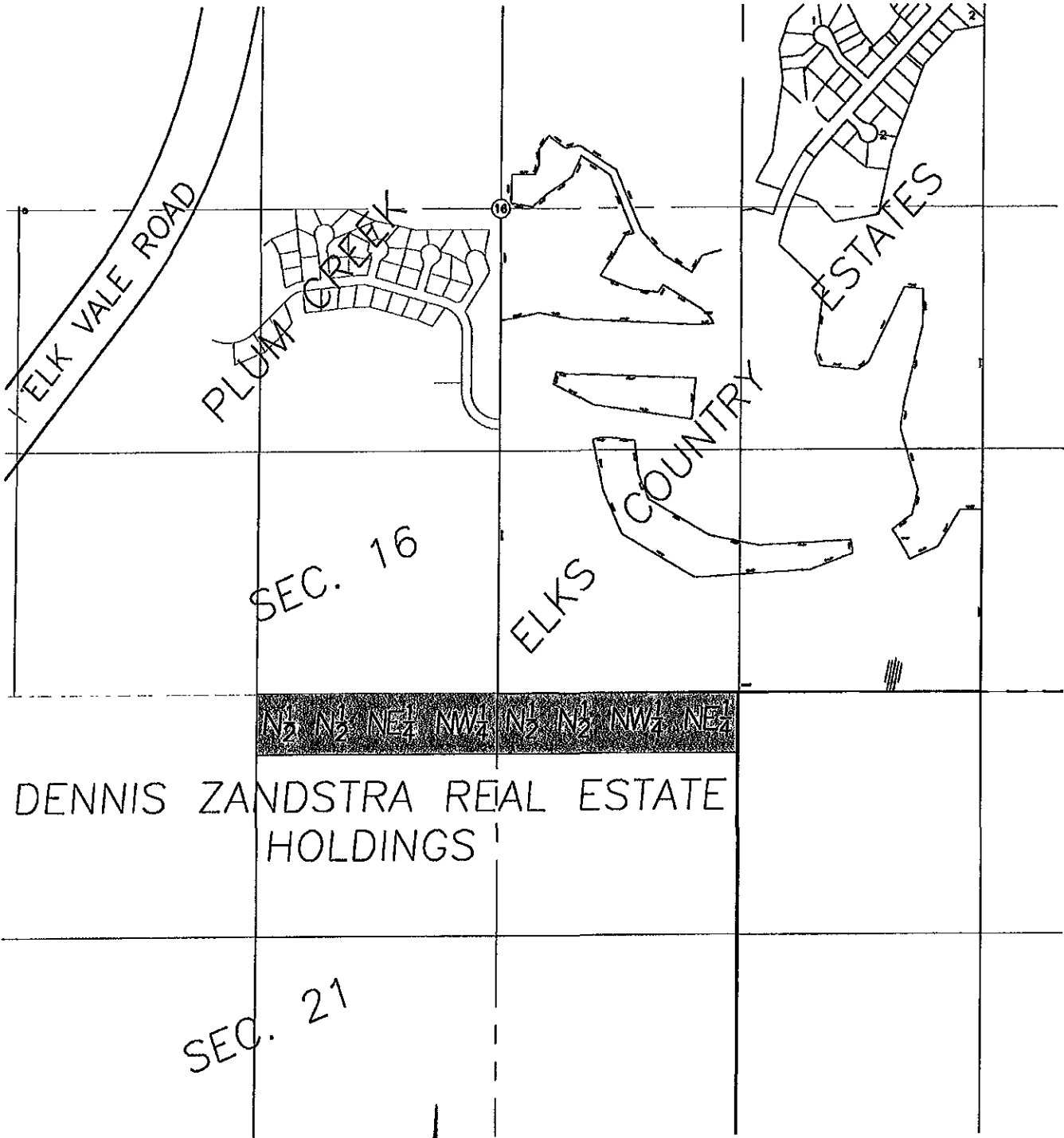


EXHIBIT A

ANNEXATION OF

$N\frac{1}{2} N\frac{1}{2} NE\frac{1}{4} NW\frac{1}{4}$ AND $N\frac{1}{2} N\frac{1}{2} NW\frac{1}{4} NE\frac{1}{4}$, SEC.21, T1N, R8E, BHM
RAPID CITY, PENNINGTON COUNTY, SOUTH DAKOTA



D.D.I.
DREAM DESIGN INTERNATIONAL, INC
 PROFESSIONAL STRUCTURAL & CIVIL ENGINEERING CONSULTANTS

620 KANSAS CITY ST., SUITE 4, RAPID CITY, SD 57701
 PH. 605-348-0638 FAX. 605-346-0645 EMAIL: engineers@dreamdesigninc.com