

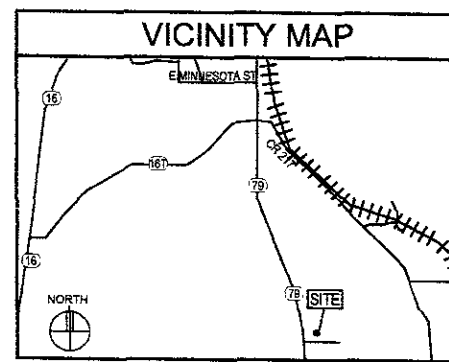
PROJECT INFORMATION

06SR077

SITE NAME:	RCYC BLACK GAP
SITE ADDRESS:	XXX S HIGHWAY 79 RAPID CITY , SD 57701
COUNTY:	PENNINGTON
GROUND ELEVATION:	3320' AMSL - 0' AGL
ANTENNA TIP HEIGHT:	3444' AMSL - 124' AGL
ANTENNA CENTERLINE HEIGHT:	3441' AMSL - 121' AGL
OVERALL HEIGHT:	3446' AMSL - 126' AGL
OCCUPANCY:	S-2
BUILDING TYPE:	V-B
PROJECT DESCRIPTION:	INSTALL A 120' TALL MONOPOLE TOWER AND 11'-6" X 30'-0" PREFAB EQUIPMENT SHELTER TO IMPROVE CELL PHONE SERVICE IN THE RAPID CITY, SD AREA.

RCYC BLACK GAP

VERIZON WIRELESS

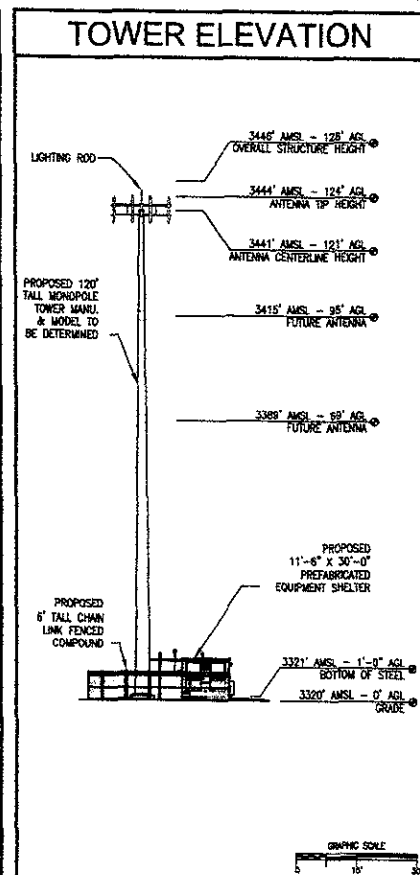
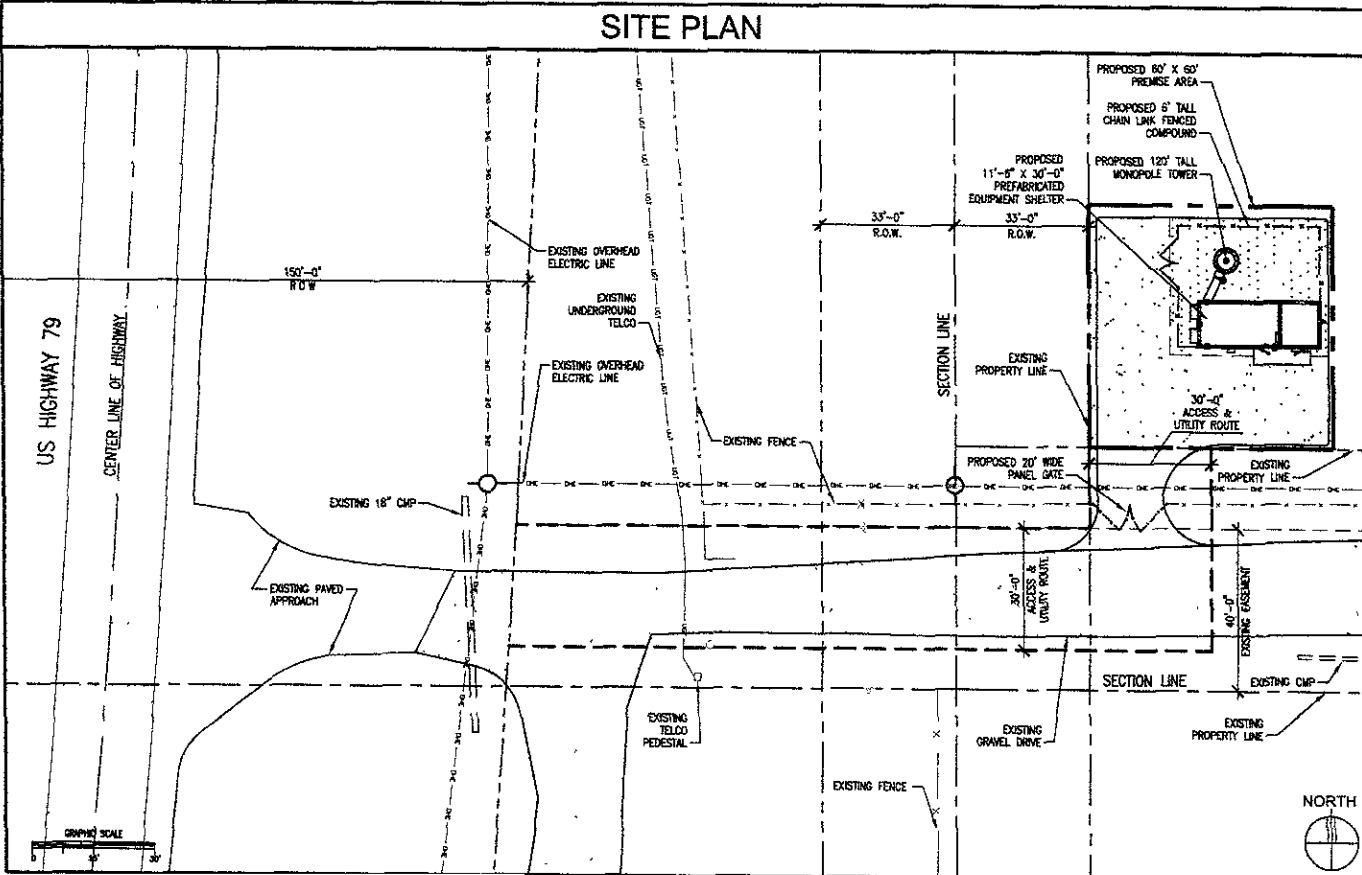


PROJECT INFORMATION	
SITE NAME:	RCYC BLACK GAP
SITE ADDRESS:	XXXX S HIGHWAY 79 RAPID CITY SD 57701
COUNTY:	PENNINGTON
GROUND ELEVATION:	3320' AMSL - 0' ASL
ANTENNA TIP HEIGHT:	3444' AMSL - 124' AGL
ANTENNA CENTERLINE HEIGHT:	3441' AMSL - 121' AGL
OVERALL HEIGHT:	3446' AMSL - 126' AGL
OCCUPANCY:	S-2
BUILDING TYPE:	V-B
PROJECT DESCRIPTION:	INSTALL A 120' TALL MONOPOLE TOWER AND 11'-6" X 30'-0" PREFAB EQUIPMENT SHELTER TO IMPROVE CELL PHONE SERVICE IN THE RAPID CITY, SD AREA.

NOT FOR CONSTRUCTION

DESIGN

PROJECT: RCYC BLACK GAP
DATE: 10-19-06
DRAWN BY: CJE
CHECKED BY:



VERIZON WIRELESS

9605 59th Avenue North, Suite # 120
Plymouth, MN 55442

PROJECT:
RCYC
BLACK GAP
XXXXX S. HIGHWAY 79
RAPID CITY, SD 57701

SHEET CONTENTS:
VICINITY MAP
PROJECT INFORMATION
SITE PLAN
TOWER ELEVATION

DRAWN BY: CJE
DATE: 10-19-06
CHECKED BY: