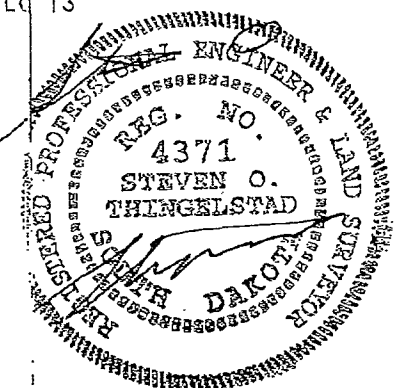
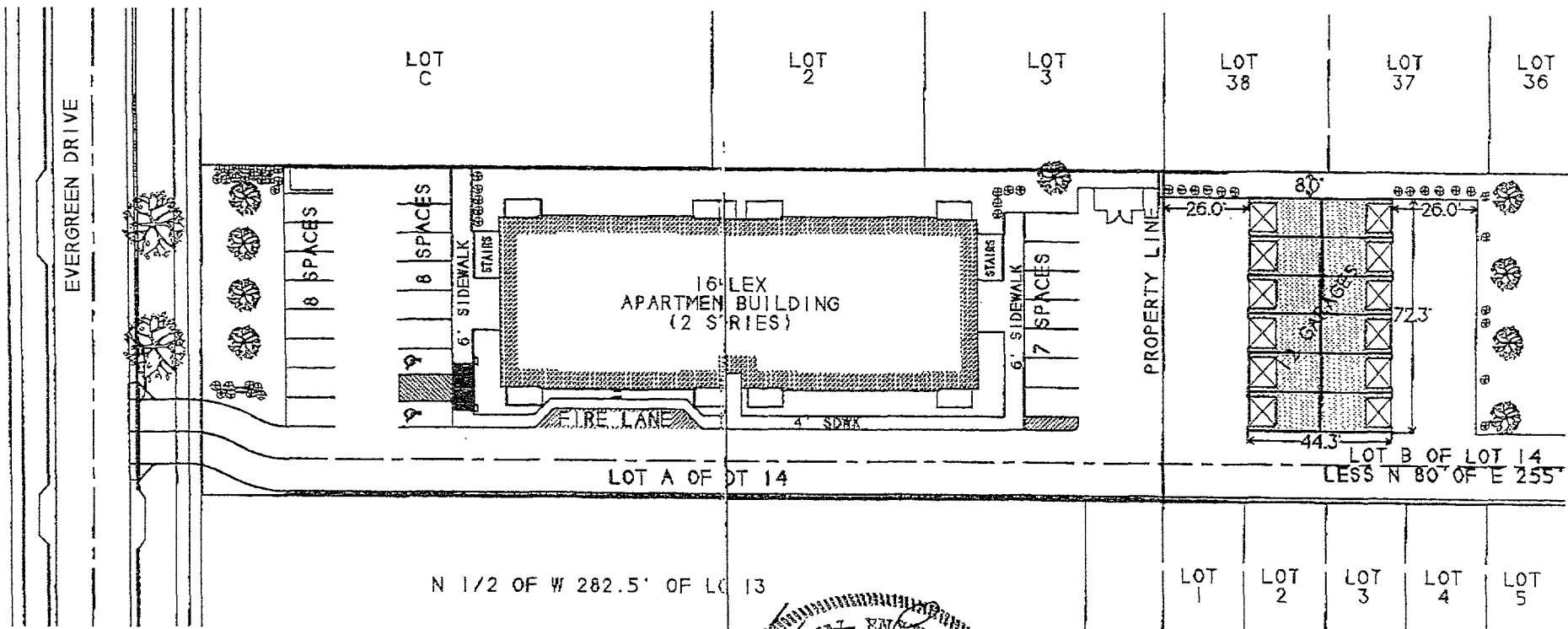


EXHIBIT
OF
PROPOSED GARAGES ON
LOT B OF LOT 14 ESS N 80' OF E 255'
ALL LOCATED IN SECTION 4,
T1N, R7E, HM, RAPID CITY
PENNINGTON COUNTY, SOUTH DAKOTA



SCALE: 1" = 50'
SEPTEMBER 6, 2006



PREPARED BY: STEVEN O. THINGELSTAD
 BRITTON ENGINEERING & LAND SURVEYING, INC.
 8035 BLACK HAWK ROAD, SUITE 5,
 BLACK HAWK, SOUTH DAKOTA 57718
 TELEPHONE: (605) 716-7988