

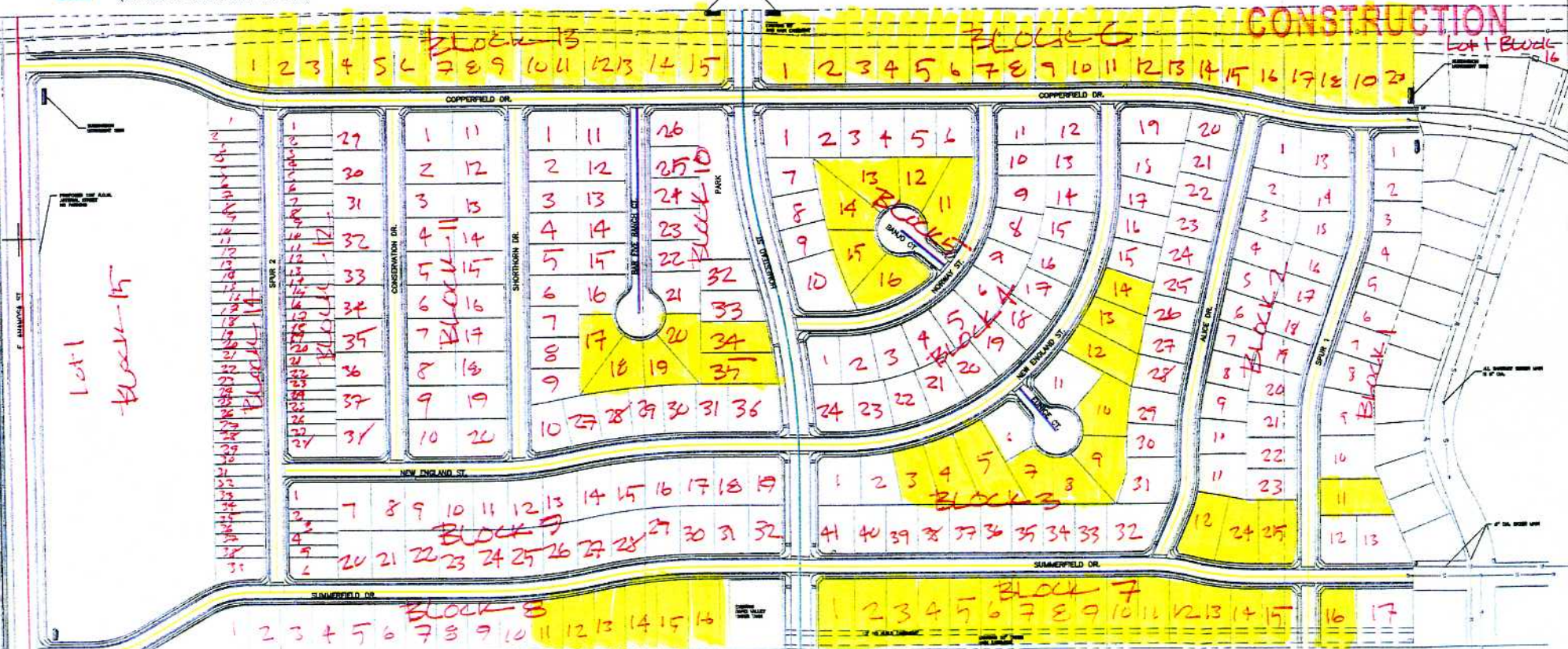
COPPERFIELD VISTA SUBDIVISION LAYOUT PLAT

ALL STREETS BUILT TO SUB COLLECTOR STANDARDS,
WITH PARKING UNLESS OTHERWISE NOTED.

- LANE, PLACE - R.O.W. = 49 FT, ST. WIDTH = 29.34 FT
(INC. CURB & GUTTER, PARK TWO SIDES)
- PRINCIPLE ARTERIAL - R.O.W. = 100 FT, ST. WIDTH = 53.34 FT
(INC. CURB & GUTTER, NO PARKING)
- SUB COLLECTOR - R.O.W. = 52 FT, ST. WIDTH = 32.34 FT
(INC. CURB & GUTTER, PARK TWO SIDES)
- COLLECTOR - R.O.W. = 76 FT, ST. WIDTH = 45.34 FT
(INC. CURB & GUTTER, PARK TWO SIDES)

→ Lots for the SNAR, lots as twice as long as wide. all but not limited to those that are highlighted.

NOT FOR
CONSTRUCTION



COPPERFIELD VISTA
PROJECT NO: 08-0432
DATE: OCTOBER 23, 2008
SHEET 1 OF 1