

SURVEY PLAT OF

LOT 1A AND LOT 1B OF STARLITE SUBDIVISION (FORMERLY LOT 1 OF STARLITE SUBDIVISION) LOCATED IN THE SW1/4 SW1/4 OF SECTION 28, TOWNSHIP 2 NORTH, RANGE 8 EAST OF THE BLACK HILLS MERIDIAN, RAPID CITY, PENNINGTON COUNTY, SOUTH DAKOTA. AUGUST, 2006

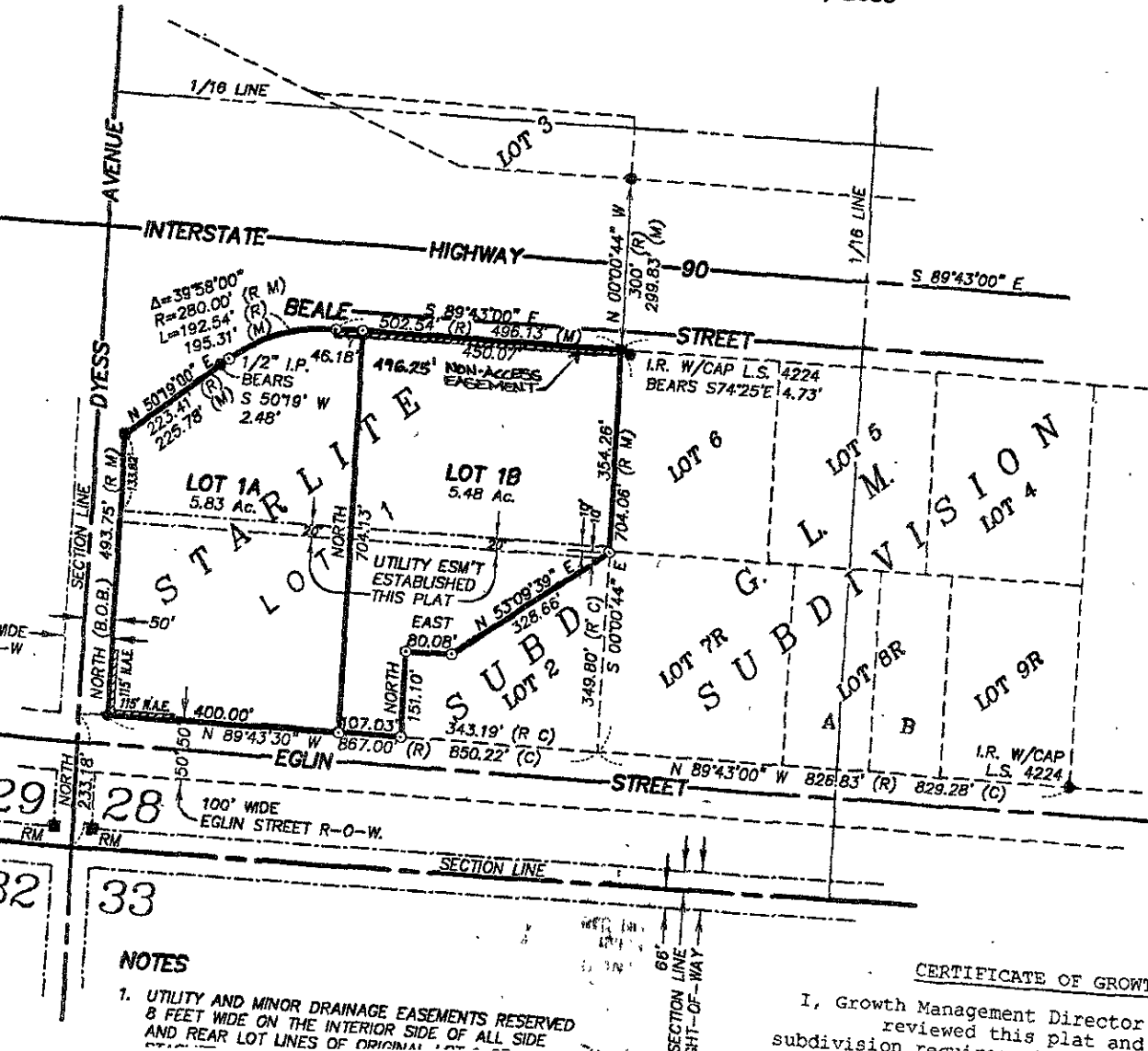


SCALE: 1" = 200'
100 0 100 200

PREPARED BY:



D.C. Scott
SURVEYORS, INC.
3153 ANDERSON ROAD
RAPID CITY, SD 57703
(605) 393-2400



- LEGEND**
- SET 5/8" IRON ROD WITH CAP MARKED "DEAN SCOTT, L.S. 4897".
 - FOUND 1/2" IRON PIPE UNLESS OTHERWISE NOTED.
 - I.R. IRON ROD.
 - I.P. IRON PIPE.
 - (R) RECORDED DIMENSION.
 - (M) MEASURED DIMENSION.
 - (C) COMPUTED DIMENSION.
 - R-O-W RIGHT-OF-WAY.
 - B.O.B. BASIS OF BEARINGS.
 - N.A.E. NON-ACCESS EASEMENT.

NOTES

1. UTILITY AND MINOR DRAINAGE EASEMENTS RESERVED 8 FEET WIDE ON THE INTERIOR SIDE OF ALL SIDE AND REAR LOT LINES OF ORIGINAL

CERTIFICATE OF GROWTH MANAGEMENT DIRECTOR

I, Growth Management Director of the City of Rapid City, have reviewed this plat and have found it to be in accordance with subdivision requirements.