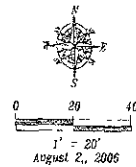


PRELIMINARY



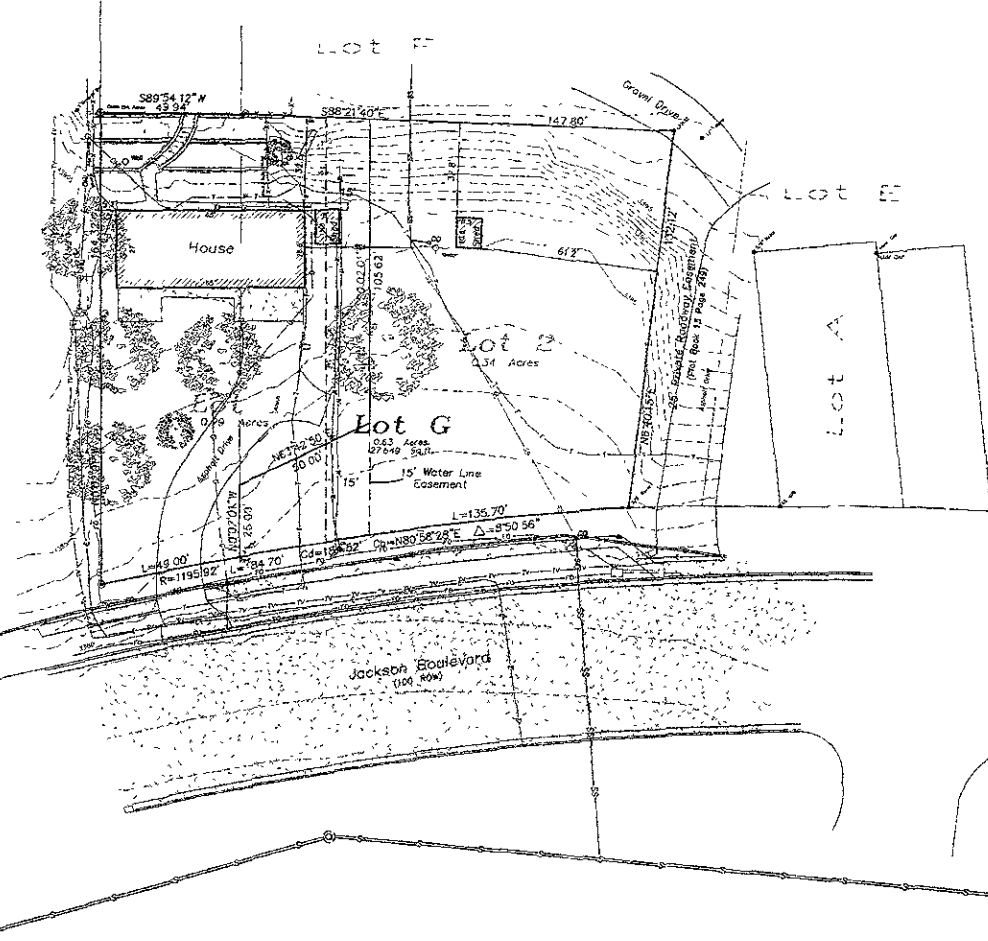
SURVEYOR'S NOTES

Utilities shown are from visual inspection, sketches provided by individual service providers and utility locates performed by South Dakota One Call. Ticket Number 061810130. The actual location of utilities and service lines may vary from the information shown herein.

Survey Mark

LEGEND

- o-o = Secondary Sewer Service Line Cleanout
- o = Yard Hydrant
- o = Fire Hydrant
- o = Water Valve
- o = Curb Stop
- o = Utility Pole
- o = Guy Wire
- o = Electric Meter
- o = Electric Sign
- o = Telecommunications Pedestal
- o = Natural Gas Meter
- o = Sign
- o = Man Box
- o = Fence Line
- o = Underground Electric
- o = Overhead Utility Line
- o = Underground Telephone
- o = Fire Sprinkler Line
- o = Storm Sewer Line
- o = Secondary Sewer Line
- o = Water Main
- o = Natural Gas Line
- o = Fixed Survey Monument as noted
- o = Set Rebar with cap marked "RW Flak 8565"
- o = "C" IN CONCRETE
- o = Control Point
- o = Tree (Deciduous)



RECEIVED

OCT 3 0 2006

Rapid City Growth
Management Department

Topographic Map and Boundary Survey
Lot G of Tract C of South Part of Lot 7
Red Cliff Terrace Subdivision
SW 1/4 NW 1/4 Section 9, T1N, R7E, B1M.
Rapid City, Pennington County, South Dakota

1022 Main Street
Rapid City, South Dakota
57709
(605) 348-1500
(605) 341-1122 (F)

Fisk Land Surveying
& Consulting
Engineers, Inc.

Surveyed by B.M.
Date 7/6/06
Drawn by RWF
Date 7/11/06
Checked by RWF

Project No.
06-08-04

Sheet
1
of
1