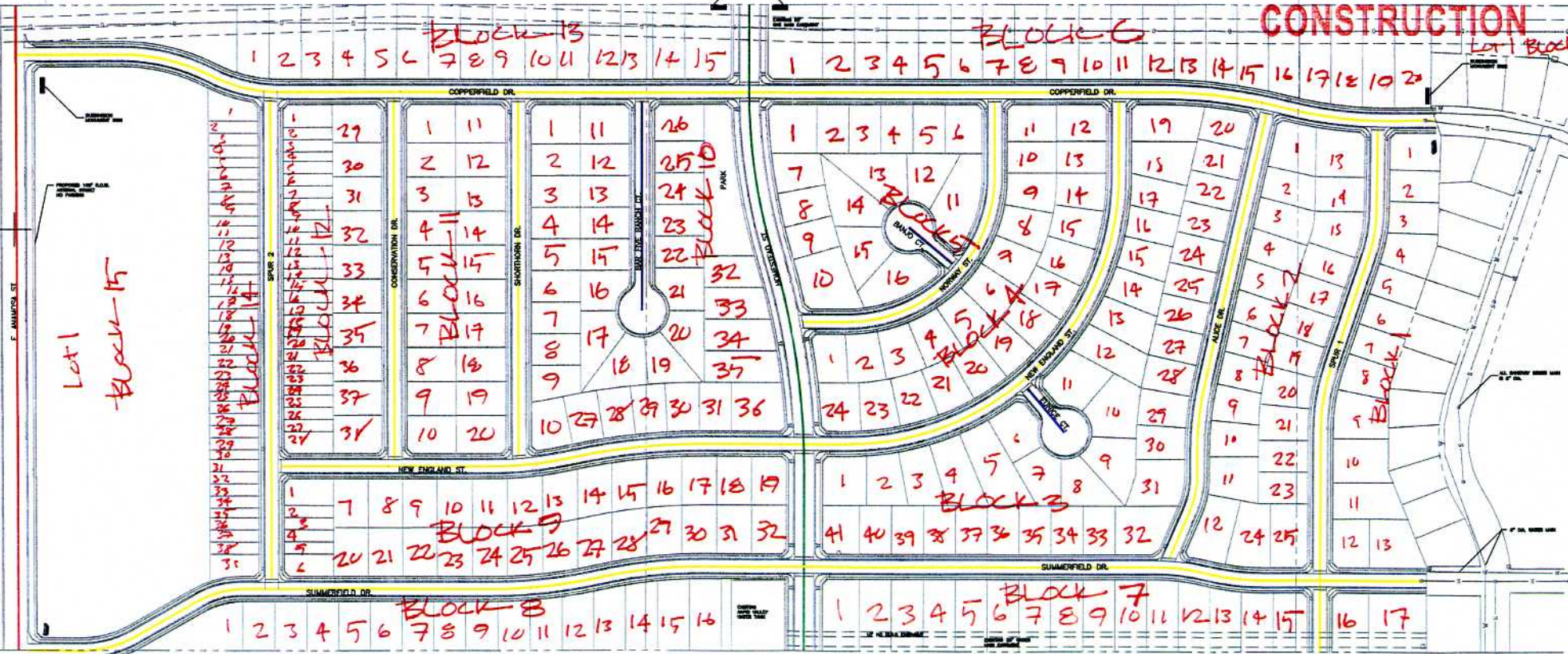


COPPERFIELD VISTA SUBDIVISION LAYOUT PLAT

ALL STREETS BUILT TO SUB COLLECTOR STANDARDS,
WITH PARKING UNLESS OTHERWISE NOTED.

- LANE, PLACE - R.O.W. = 49 FT, ST. WIDTH = 29.34 FT
(INC. CURB & GUTTER, PARK TWO SIDES)
- PRINCIPLE ARTERIAL - R.O.W. = 100 FT, ST. WIDTH = 53.34 FT
(INC. CURB & GUTTER, NO PARKING)
- SUB COLLECTOR - R.O.W. = 52 FT, ST. WIDTH = 32.34 FT
(INC. CURB & GUTTER, PARK TWO SIDES)
- COLLECTOR - R.O.W. = 76 FT, ST. WIDTH = 45.34 FT
(INC. CURB & GUTTER, PARK TWO SIDES)

**NOT FOR
CONSTRUCTION**



EXISTING WATER AND SEWER LINE LOCATIONS ARE APPROXIMATE

COPPERFIELD VISTA
PROJECT NO: 06-0432
DATE: OCTOBER 23, 2006
SHEET 1 OF 1

DREAM DESIGN INTERNATIONAL, INC.
PROFESSIONAL STRUCTURAL & CIVIL ENGINEERING CONSULTANTS

408 KANAWHA CITY ST., SUITE 4, KANAWHA CITY, WV 26031
TEL: 606-342-6600 FAX: 606-342-6640 EMAIL: engin@dreamdesigninc.com