

SURVEYOR'S NOTES

Utilities shown are from visual inspection, sketches provided by individual service providers and Utility Locates performed by South Dakota One Call, Ticket Number 061810152 & 061810149. The actual location of utilities and service lines may vary from the information shown hereon.

LEGEND

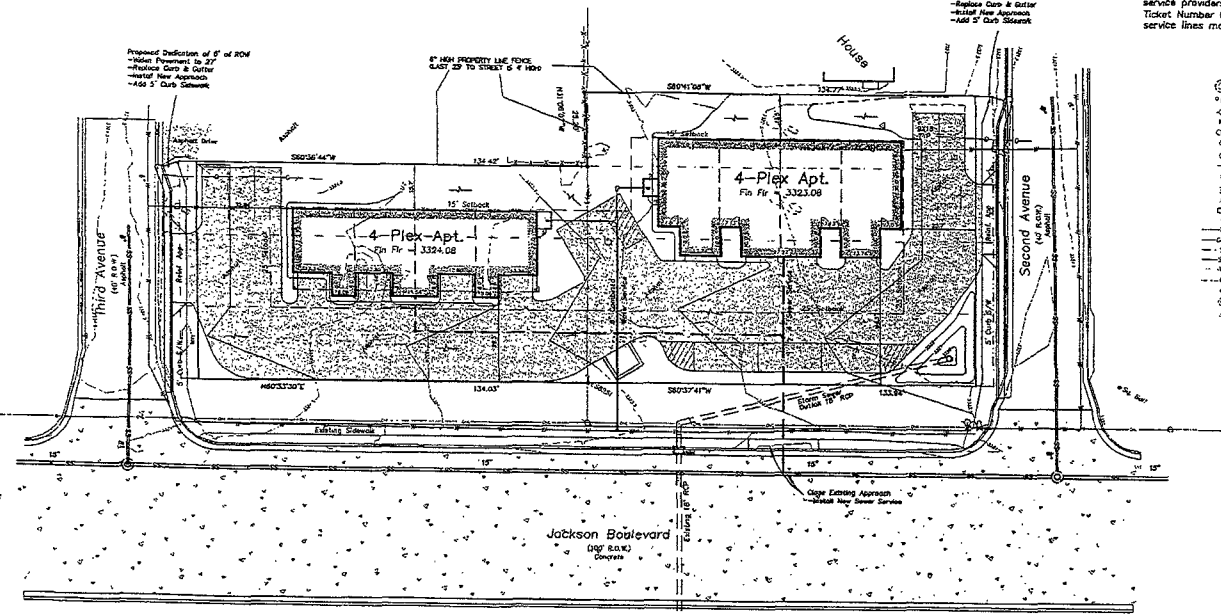
- ⊕ = Sanitary Sewer Manhole (Unless noted)
- ⊙ = Sanitary Sewer Service Line Cleanout
- ⊕ = Fire Hydrant
- ⊕ = Water Valve
- ⊕ = Curb Stop
- ⊕ = Utility Pole
- ⊕ = Yard Hydrant
- ⊕ = Day Wire
- ⊕ = Electric Meter
- ⊕ = Natural Gas Meter
- ⊕ = Sign
- ⊕ = Mail Box
- ⊕ = Post
- ⊕ = Fence Line
- ⊕ = Overhead Utility Line
- ⊕ = Storm Sewer Line
- ⊕ = Sanitary Sewer Line
- ⊕ = Water Main
- ⊕ = Natural Gas Line
- ⊕ = Found Survey Monument as noted
- ⊕ = Set Rebar with cap marked "RW Flsk 6565"
- ⊕ = Control Point

NOTE STREET WIDENING

Proposed Dedication of 5' of ROW
 -Shift Pavement to 2"
 -Replace Curb & Gutter
 -Install New Approach
 -Add 5' Curb Sloewalk

Proposed Dedication of 5' of ROW
 -Shift Pavement to 2"
 -Replace Curb & Gutter
 -Install New Approach
 -Add 5' Curb Sloewalk

8" HIGH PROPERTY LINE FENCE
 CLASH 20' TO STREET & 4' HIGH



Preliminary Site Plan
 Lots 1, 2, 38, 39, & 40, Block 3 of Cottonwood
 Subdivision & Adjacent Vacated Railroad Lane
 Section 9, T1N, R7E, B.H.M.
 Rapid City, Pennington County, South Dakota

1222 Main Street
 P.O. Box 6154
 Rapid City, South Dakota
 57709
 (605) 346-1538
 (605) 349-1112 (fx)

Fisk Land Surveying
 & Consulting
 Engineers, Inc.

Preliminary

Surveyed by: BL,ML
 Date: 7/17/06
 Drawn by: RME
 Date: 9/8/06
 Checked by: WF
 Revisions

Project No.
 98-08-03

Sheet
 1
 of
 1

PRELIMINARY

RECEIVED
 SEP 6 2006
 Rapid City Growth
 Management Department