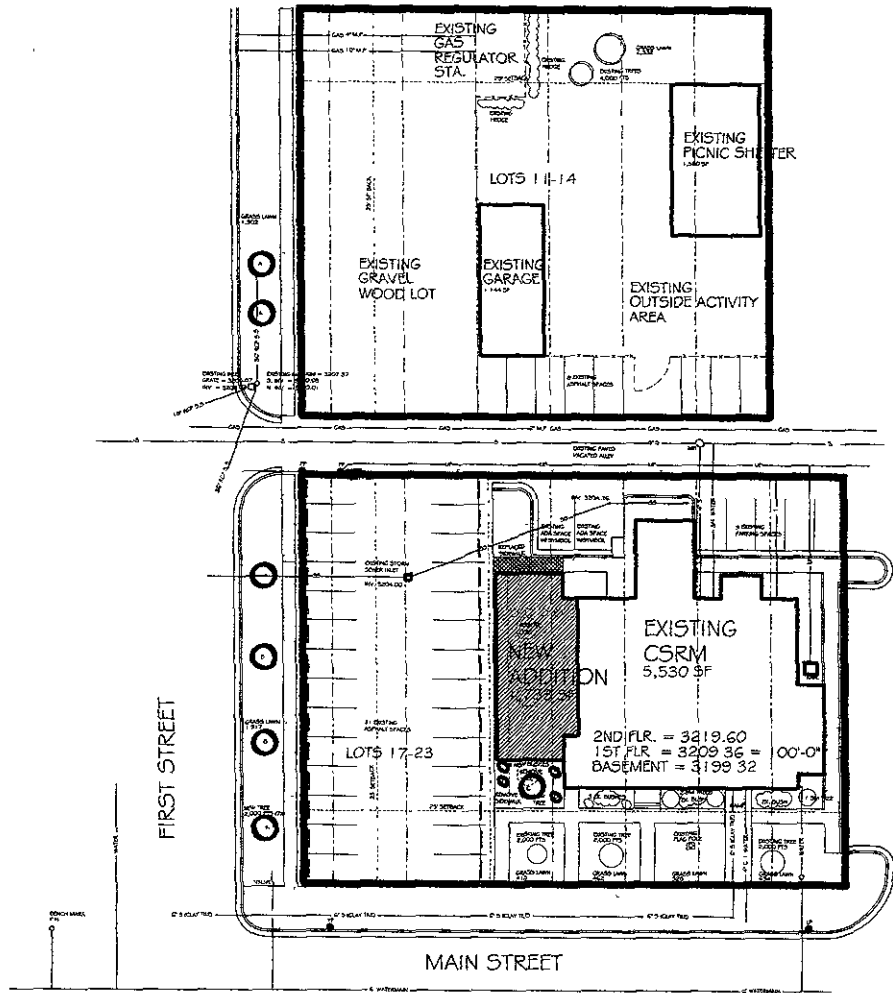
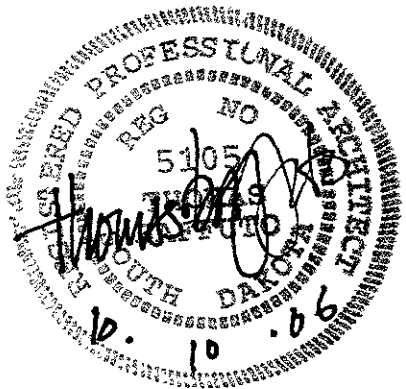


PLANNED

OCT 10 2006

Rapid City South
Management District



SITE PLAN
1" = 20'-0"
TRUE NORTH

PLANTING NOTES
A = SILVER MAPLE (2 000 PTS)
B = GREEN ASH (2,000 PTS)
C = MOUNTAIN ASH (500 PTS)
D = ALUGO PINE (250 PTS)

LANDSCAPING ORDINANCE NOTES
SITE #18-300 SF
BUILDINGS = 9,267 SF
LANDSCAPING REQUIRES 38,333 PTS
12 LARGE TREE @ 2000 PTS = 24,000 PTS
0 MEDIUM TREE @ 1000 PTS = 0 PTS
1 SMALL TREE @ 500 PTS = 500 PTS
19 SHRUBS @ 250 PTS = 4,750 PTS
910 SF GRASS @ 105 SF = 9,100 PTS
TOTAL POINTS = 58,350 PTS

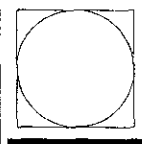
PARKING ORDINANCE NOTES
7 SPACE PER DORM ROOM = 6 DORM ROOMS X 1 = 6 SPACES
OFFICE AREA = 6,050 SF AT 5 PER 1,000 SQUARE FEET = 30 SPACES
6 + 30 = 36 SPACES
EXISTING SPACES = 46 > 36 REQUIRED

SITE NOTES
LEGAL DESCRIPTION: LOTS 11-14 AND LOTS 17-23 AND THE WEST 10 FEET OF VACATED RIGHT-OF-WAY ADJUTING LOT 17 AND VACATED ALLEY BETWEEN LOTS 11-14 AND LOTS 19-25 BLOCK 80, ORIGINAL TOWN OF RAPID CITY SECTION 1 T1N, R7E, B1M RAPID CITY, PENNINGTON COUNTY, SOUTH DAKOTA
LOCATION: 30 MAIN STREET
ZONING: GENERAL COMMERCIAL
SURROUNDING ZONING:
NORTH: GENERAL COMMERCIAL
SOUTH: GENERAL COMMERCIAL
EAST: LIGHT COMMERCIAL
WEST: GENERAL COMMERCIAL

2.1
Sheet Number
06-003
Project Number

10/09/06
09/22/06
09/02/06

V.A. ADDITION
THE CORNERSTONE
RESCUE MISSION
30 MAIN STREET
RAPID CITY, SOUTH DAKOTA
Drawn By: TE
Checked By: TE



baffuto
Architectural
1025 Suffer Blvd
Rapid City, SD 57702
605.341.1234 Fax 605.341.7307
www.baffuto.com
art + technology
reg. arch. architect
staff: tom + mel cfm

Copyright 2006, Governor of South Dakota
This approval, and any fees due, do not constitute a warranty of any kind, and the undersigned does not accept any liability for any errors or omissions in this plan or any other documents prepared by the undersigned.