

00P D078

10/23/2006 8:25AM

PRUDENTIAL KAHLER 605-343-7486

NO. 6991

P. 2

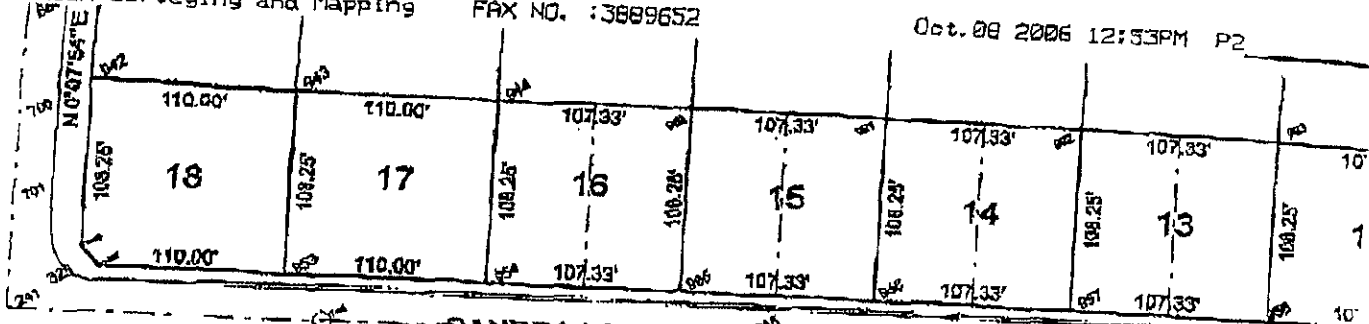
1-605-3991058

p.2

FROM : Hanson Surveying and Mapping

FAX NO. : 3689652

Oct. 28 2006 12:53PM P2



PARKVIEW DRIVE

S 0°07'54.5\"W 238.01'

S 89°52'01.9\"E 583.54'

5.9961 AC. +/-

S 0°07'54.4\"W 428.69'

SHELDY LANE

N 65°52'01.8\"W 526.53'

UNPLATTED

RECEIVED

OCT 23 2006

Rapid City Growth Management Department

Manhole
Rim EL = 3284.7
Inv. EL = 3280.1

S 45°07'54.5\"W 470.41'

N 0°07'54.4\"E