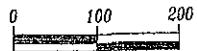


Plat of Lots 1 through 8 of Elysian Heights Subdivision and Dedicated Right-of-Way

located in the N1/2 SW1/4 of Section 21, T1N, R7E, BHM, Rapid City, Pennington County, South Dakota

Prepared by:
Flak Land Surveying & Consulting Engineers, Inc.
P.O. Box 8164
Rapid City, SD 57709
(605) 348-1638
Project No. 08-10-02



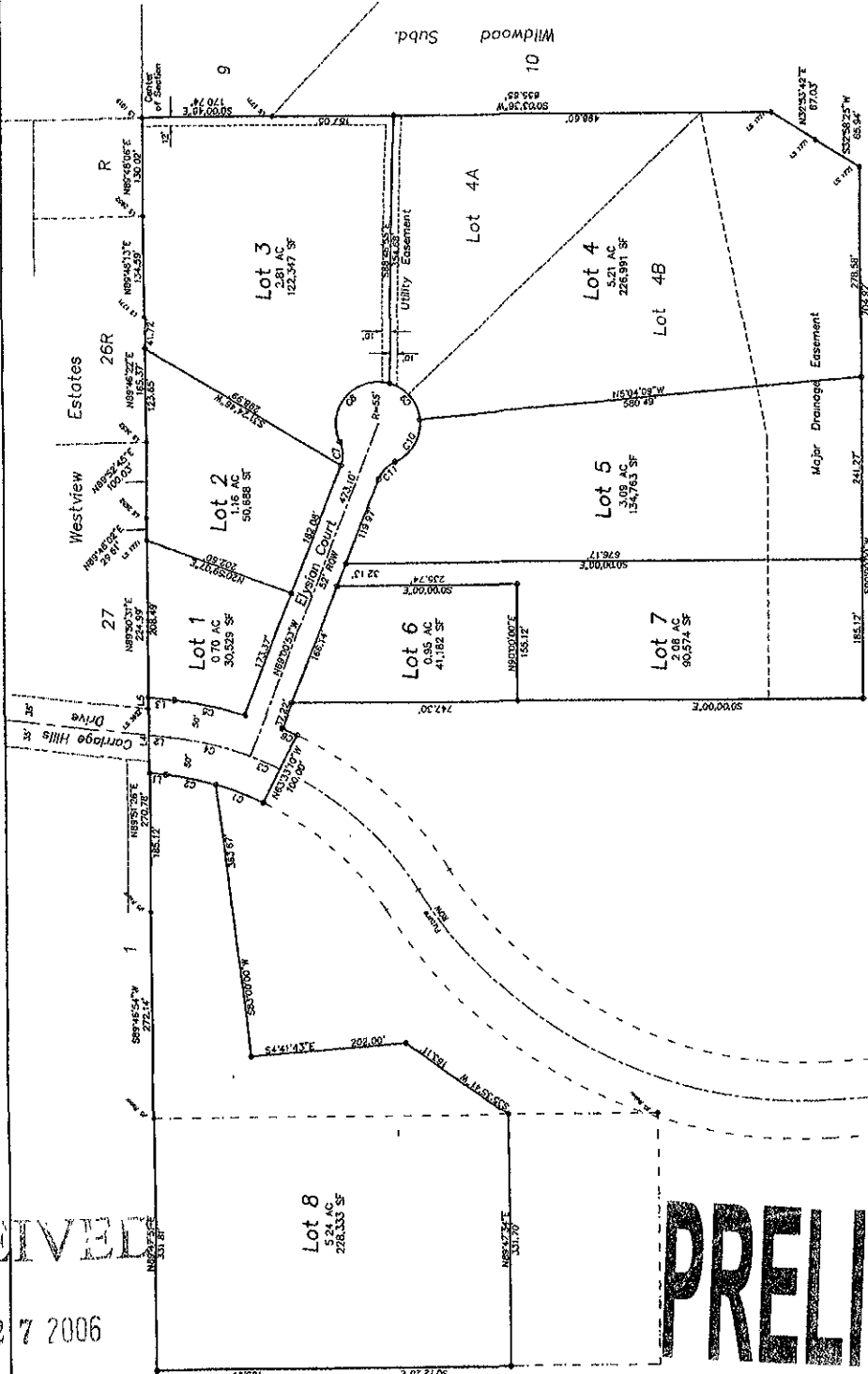
1" = 100'
August 23, 2006

8' Utility and Minor Drainage Easements on the interior sides of all lot lines except along the line adjoining Lots 1 and 2 of Davis Subdivision

All Major Drainage Easements Shown Hereon Shall Be Kept Free Of All Obstructions, Including But Not Limited To Buildings, Walls, Fences, Hedges, Trees And Shrubs. These Easements Grant To All Public Authorities The Right To Construct, Operate, Maintain, Inspect, And Repair Such Improvements And Structures As It Deems Expedient To Facilitate Drainage From Any Source.

Corralle Hills Drive and Elysian Court, containing 1.07 Acres more or less, as shown hereon are hereby dedicated as public right-of-ways, however, such dedication shall not be construed to mean a donation of the fee of said land.

● = Found Survey Monument marked as noted
⊙ = Set Rebar with cap marked "RW Flak 6585"



LINE	BEARING	DISTANCE
L1	N6°26'51"E	24.00'
L2	N8°35'31"E	26.30'
L3	N3°35'31"E	34.50'
L4	N83°29'21"E	15.81'

LINE	BEARING	DISTANCE
R1	S89°46'54"W	272.14'
R2	N89°37'36"E	279.78'
R3	N89°37'36"E	182.12'
R4	N89°37'36"E	383.87'
R5	N89°37'36"E	383.87'
R6	N89°37'36"E	383.87'
R7	N89°37'36"E	383.87'
R8	N89°37'36"E	383.87'
R9	N89°37'36"E	383.87'
R10	N89°37'36"E	383.87'
R11	N89°37'36"E	383.87'
R12	N89°37'36"E	383.87'
R13	N89°37'36"E	383.87'
R14	N89°37'36"E	383.87'
R15	N89°37'36"E	383.87'
R16	N89°37'36"E	383.87'
R17	N89°37'36"E	383.87'
R18	N89°37'36"E	383.87'
R19	N89°37'36"E	383.87'
R20	N89°37'36"E	383.87'
R21	N89°37'36"E	383.87'
R22	N89°37'36"E	383.87'
R23	N89°37'36"E	383.87'
R24	N89°37'36"E	383.87'
R25	N89°37'36"E	383.87'
R26	N89°37'36"E	383.87'
R27	N89°37'36"E	383.87'
R28	N89°37'36"E	383.87'
R29	N89°37'36"E	383.87'
R30	N89°37'36"E	383.87'
R31	N89°37'36"E	383.87'
R32	N89°37'36"E	383.87'
R33	N89°37'36"E	383.87'
R34	N89°37'36"E	383.87'
R35	N89°37'36"E	383.87'
R36	N89°37'36"E	383.87'
R37	N89°37'36"E	383.87'
R38	N89°37'36"E	383.87'
R39	N89°37'36"E	383.87'
R40	N89°37'36"E	383.87'
R41	N89°37'36"E	383.87'
R42	N89°37'36"E	383.87'
R43	N89°37'36"E	383.87'
R44	N89°37'36"E	383.87'
R45	N89°37'36"E	383.87'
R46	N89°37'36"E	383.87'
R47	N89°37'36"E	383.87'
R48	N89°37'36"E	383.87'
R49	N89°37'36"E	383.87'
R50	N89°37'36"E	383.87'
R51	N89°37'36"E	383.87'
R52	N89°37'36"E	383.87'
R53	N89°37'36"E	383.87'
R54	N89°37'36"E	383.87'
R55	N89°37'36"E	383.87'
R56	N89°37'36"E	383.87'
R57	N89°37'36"E	383.87'
R58	N89°37'36"E	383.87'
R59	N89°37'36"E	383.87'
R60	N89°37'36"E	383.87'
R61	N89°37'36"E	383.87'
R62	N89°37'36"E	383.87'
R63	N89°37'36"E	383.87'
R64	N89°37'36"E	383.87'
R65	N89°37'36"E	383.87'
R66	N89°37'36"E	383.87'
R67	N89°37'36"E	383.87'
R68	N89°37'36"E	383.87'
R69	N89°37'36"E	383.87'
R70	N89°37'36"E	383.87'
R71	N89°37'36"E	383.87'
R72	N89°37'36"E	383.87'
R73	N89°37'36"E	383.87'
R74	N89°37'36"E	383.87'
R75	N89°37'36"E	383.87'
R76	N89°37'36"E	383.87'
R77	N89°37'36"E	383.87'
R78	N89°37'36"E	383.87'
R79	N89°37'36"E	383.87'
R80	N89°37'36"E	383.87'
R81	N89°37'36"E	383.87'
R82	N89°37'36"E	383.87'
R83	N89°37'36"E	383.87'
R84	N89°37'36"E	383.87'
R85	N89°37'36"E	383.87'
R86	N89°37'36"E	383.87'
R87	N89°37'36"E	383.87'
R88	N89°37'36"E	383.87'
R89	N89°37'36"E	383.87'
R90	N89°37'36"E	383.87'
R91	N89°37'36"E	383.87'
R92	N89°37'36"E	383.87'
R93	N89°37'36"E	383.87'
R94	N89°37'36"E	383.87'
R95	N89°37'36"E	383.87'
R96	N89°37'36"E	383.87'
R97	N89°37'36"E	383.87'
R98	N89°37'36"E	383.87'
R99	N89°37'36"E	383.87'
R100	N89°37'36"E	383.87'

RECEIVED

SEP 27 2006

Rapid City Growth

Management

PRELIMINARY