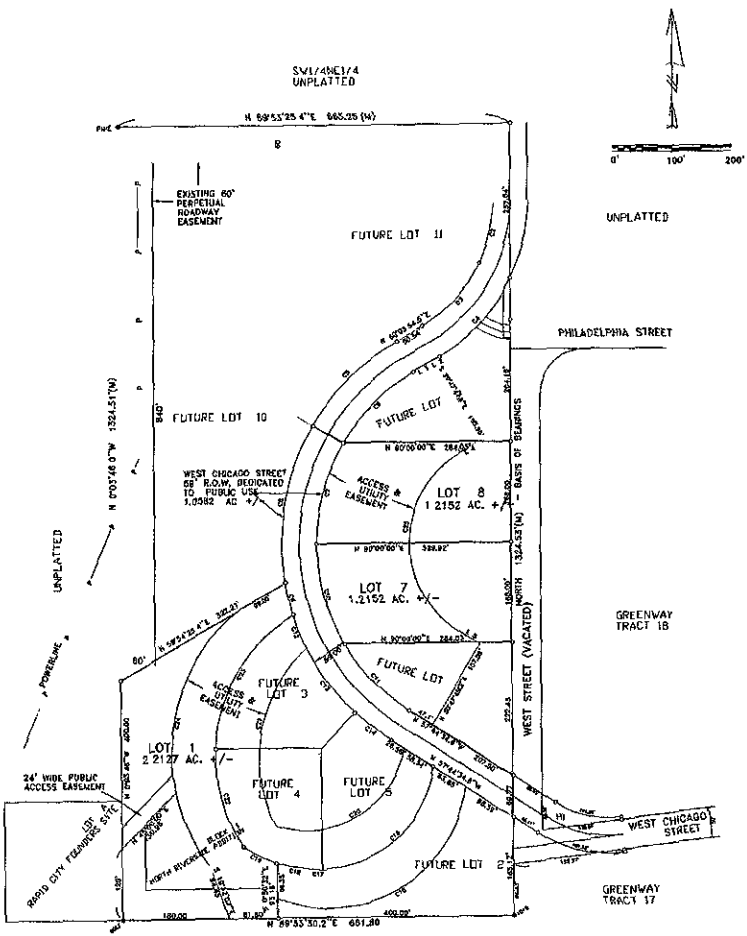


06PD083

PLAT OF LOTS 1,7 AND 8 OF FOUNDERS PARK SUBDIVISION AND DEDICATED PUBLIC R.O.W.
 FORMERLY A PORTION OF W1/2NW1/4SE1/4 IN SECTION 35, 12N, R7E, B.H.M. INCLUDING BLOCK 1 OF NORTH RIVERSIDE ADDITION
 LOCATED IN SE1/4 OF SECTION 35, 12N, R7E, B.H.M. RAPID CITY, PENNINGTON COUNTY, SOUTH DAKOTA



One Bearing Distance

1	66°03'54.47\"	16.89'
2	33°01'54.74\"	33.63'
3	27°11'50.97\"	38.80'

AREA DEDICATED TO PUBLIC R.O.W. = 1.0582 AC +/-

Curve	Delta Angle	Radius	Arc	Tangent	Chord	Chord Bearing
1	15°50'33.47\"	210.50	107.64	54.74	108.74	125°41'10.77\"
2	34°25'12.22\"	210.50	144.18	74.95	142.52	102°11'12.57\"
3	34°25'12.22\"	289.50	179.25	92.77	172.24	125°11'12.57\"
4	29°30'42.22\"	330.50	201.57	103.10	193.33	102°11'12.57\"
5	29°30'42.22\"	330.50	170.24	87.95	188.52	125°11'12.57\"
6	30°13'07.57\"	330.50	176.33	89.21	174.15	102°11'12.57\"
7	30°13'07.57\"	389.50	272.29	141.59	266.39	125°11'12.57\"
8	30°13'07.57\"	389.50	255.18	131.84	255.18	102°11'12.57\"
9	30°13'07.57\"	389.50	176.33	89.21	174.15	125°11'12.57\"
10	30°13'07.57\"	389.50	156.89	78.83	155.99	102°11'12.57\"
11	82°0'16.08\"	389.50	68.09	35.10	69.21	125°11'12.57\"
12	30°13'07.57\"	389.50	78.17	39.21	76.03	102°11'12.57\"
13	11°15'18.57\"	389.50	135.98	69.98	135.98	125°11'12.57\"
14	11°15'18.57\"	389.50	117.17	59.18	117.17	102°11'12.57\"
15	11°15'18.57\"	165.23	275.24	147.18	252.80	125°11'12.57\"
16	11°15'18.57\"	165.23	179.18	91.85	179.18	102°11'12.57\"
17	9°03'48.11\"	135.29	81.84	51.13	61.65	125°11'12.57\"
18	16°13'00.81\"	210.29	91.86	51.13	91.86	102°11'12.57\"
19	9°03'48.11\"	182.09	255.98	131.82	255.98	125°11'12.57\"
20	74°59'54.01\"	248.00	324.62	180.29	371.44	102°11'12.57\"
21	88°15'54.01\"	174.78	224.82	124.82	224.82	125°11'12.57\"
22	88°15'54.01\"	174.78	142.59	72.89	142.59	102°11'12.57\"
23	88°15'54.01\"	174.78	142.59	72.89	142.59	125°11'12.57\"
24	110°24'08.58\"	174.00	359.59	201.94	258.93	102°01'01.00\"

PREPARED BY:
 HANSON SURVEYING & MAPPING
 832 HORACE MANN DRIVE
 RAPID CITY, SD 57701
 605-386-9652