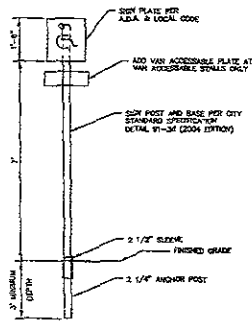
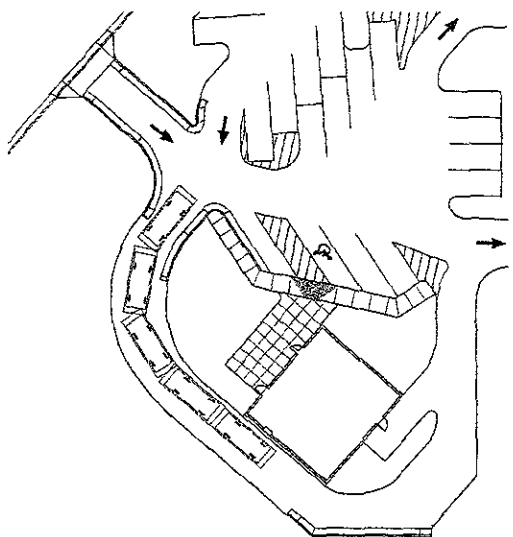


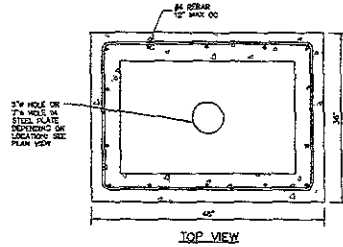
FIRE HYDRANT LOCATION MAP
SCALE: 1"=100'



HANDICAP SIGN
NOT TO SCALE



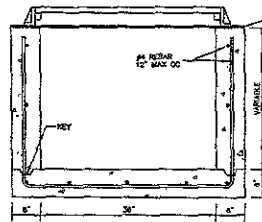
DRIVE THRU STACKING
SCALE: 1"=20'



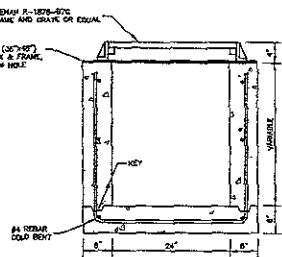
TOP VIEW

3/4" HOLE OR 7/8" HOLE IN STEEL PLATE (INDICATED ON LOCATION SEE PLAN VIEW)

CONSTRUCT INLET IN ACCORDANCE WITH CITY OF RAPID CITY SPECIFICATIONS FOR PUBLIC WORKS CONSTRUCTION

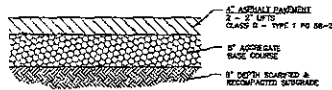


FRONT VIEW

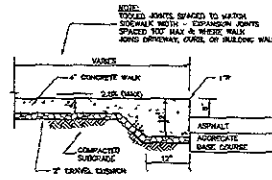


SIDE VIEW

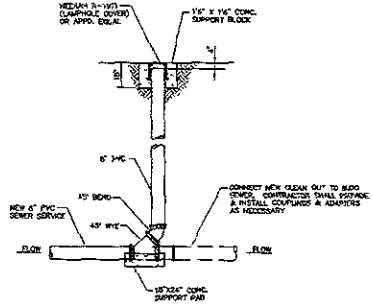
TYPE "A" INLET (MODIFIED)
NOT TO SCALE



ASPHALT PAVEMENT DETAIL
NOT TO SCALE



THICKENED EDGE SIDEWALK
NOT TO SCALE



SEWER CLEANOUT DETAIL
NOT TO SCALE



File Number	2015
Location	SECT 4 SECTION 4 17th, 21st, 24th
Drawn by	CH/ML/KCS
Checked by	ML/2008
Design by	CS
Drawn by	ML/2008
Checked by	ML/2008

DATE PLOTTED: 08/27/2008

FJORDS ICE CREAM & COFFEE SHOP
 CIVIL ENGINEERING SITE PLANS
 RAPID CITY, SD

Project / Date
 Sheet Name
 CIVIL SITE DETAILS
 Sheet Number
 PRIN, JJ
 SEP 27 2008
 FMG, Inc.
05

FMG, Inc.
 3700 S. Gurley Road
 Rapid City, SD 57703-0317
 (605) 342-4100 FAX (605) 342-4222
 www.fmginc.com