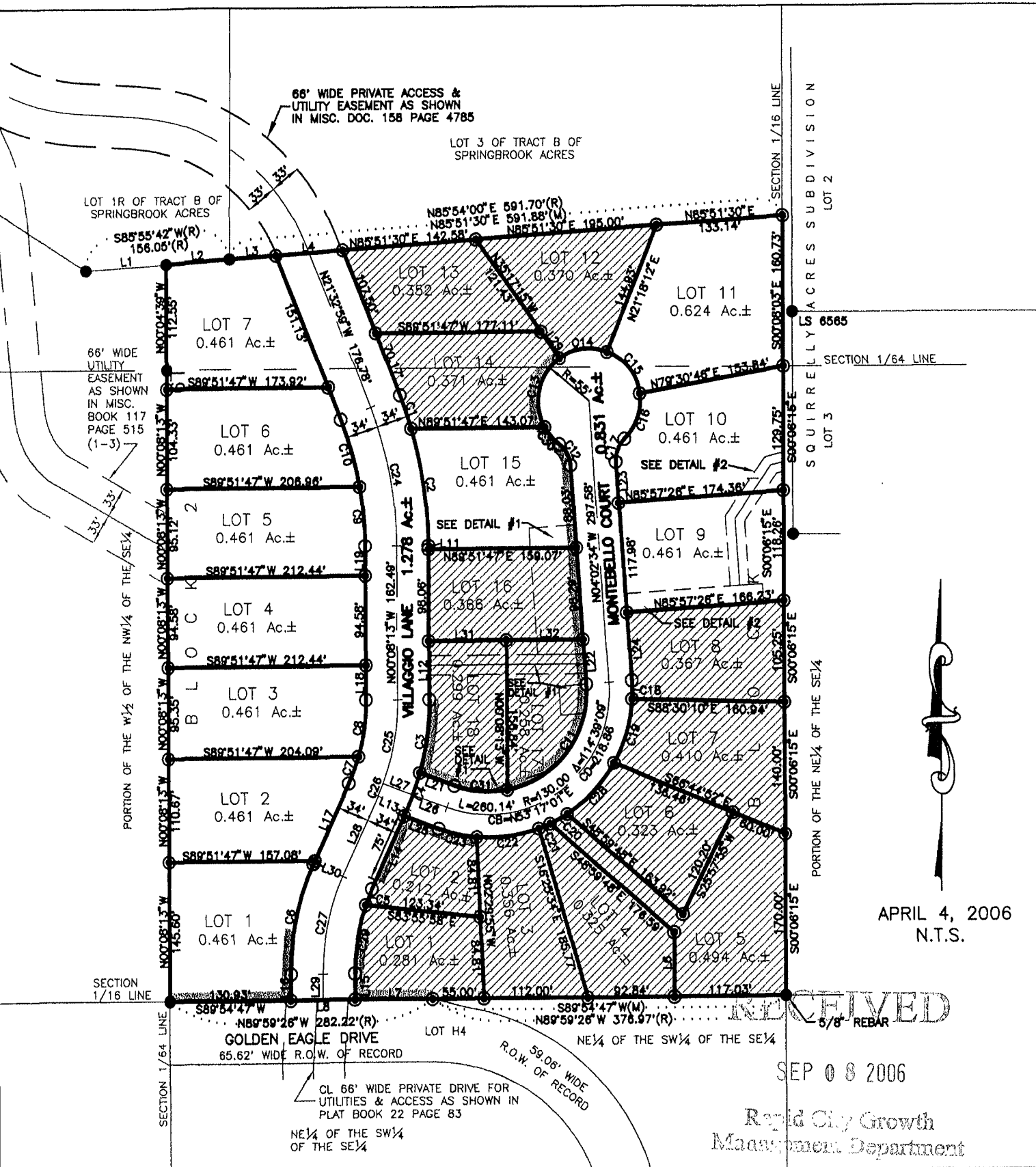


LOTS 1 THROUGH 18 OF BLOCK 1, AND LOTS 1 THROUGH 7 OF BLOCK 2, THE VILLAGGIO AT GOLDEN EAGLE

(formerly a portion of the E 1/2 of the NW 1/4 of the SE 1/4 of Section 22)
LOCATED IN THE E 1/2 OF THE NW 1/4 OF THE SE 1/4,
SECTION 22, T1N, R7E, BHM
RAPID CITY, PENNINGTON COUNTY, SOUTH DAKOTA



APRIL 4, 2006
N.T.S.

RECEIVED
SEP 08 2006
Rapid City Growth
Management Department