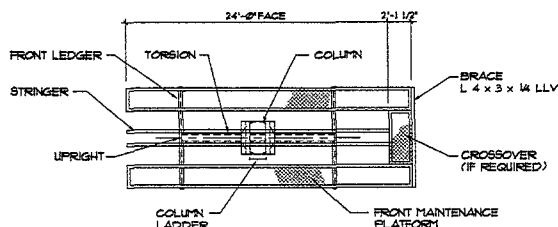
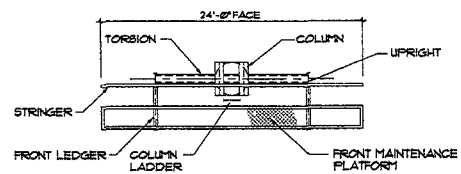


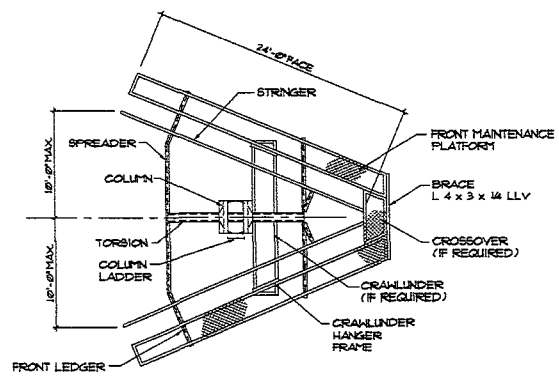
ELEVATION



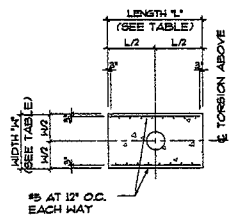
PLAN VIEW  
BACK TO BACK



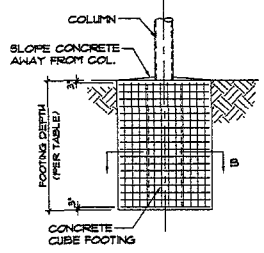
PLAN VIEW  
SINGLE FACE



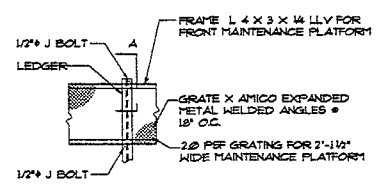
PLAN VIEW  
Y-BUILD



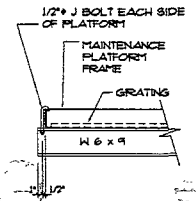
SECTION B



ALTERNATE CUBE  
FOOTING DETAIL



TYPICAL WALKWAY DETAIL



SECTION A

**NOTES AND SPECIFICATIONS**  
(APPLY UNLESS OTHERWISE NOTED ON PERMIT DRAWING)

CODE - 2001 CBC  
DESIGN WIND LOAD - 30 PSF  
SEISMIC ZONE - 4  
DESIGN LIVE LOAD - (2' WIDE FRONT AND 2' WIDE REAR MAINTENANCE PLATFORM) 20 PSF  
DESIGN DEAD LOAD - (SIGN FACES) - 25 PSF  
STEEL - ROLLED SECTIONS - ASTM A-36  
PIPE SECTIONS - ASTM A-53 B OR 252 OR 2 OR AP-514  
ALL STRUCTURAL STEEL SHALL BE FABRICATED AND DETECTED ACCORDING TO LATEST AISC SPECIFICATIONS AND STANDARD PRACTICE  
CONCRETE - MIN. COMPRESSIVE STRENGTH OF  $f_c$  - 3000 PSF @ 28 DAYS (150 PCF) 4" SLUMP (MAX.) (FOOTING DESIGN BASED ON 2500 PSF CONCRETE)  
REINFORCING - ASTM A-615 AND A-616 GRADE 60 DEFORMED (EQUIV.), PLACE REINFORCING PER ACI 318-02 AND CRS STANDARDS. LAP SPICES 30 BAR DIAMETERS. ASTM A-615 GRADE 60 DEFORMED (AS REQUIRED).  
WELDING ROBS - ASTM A-333 (E-70) SERIES LOW HYDROGEN WELDING PROCEDURE SHALL COMPLY WITH AMERICAN WELDING SOCIETY STANDARDS.  
SHOP WELDING TO BE PERFORMED BY CERTIFIED WELDERS.  
SHAP SHALL BE PAINTED. DO NOT USE LEAD BASED PAINT.  
WOOD STRUCTURAL MEMBERS - ROUGH SAWN DOUGLAS FIR-LARCH (#2 MIN. FB (REPEATING)) - 1310 PSF  
BOLTS AND NUTS - REGULAR BOLTS SHALL CONFORM TO ASTM A-307. HIGH STRENGTH BOLTS SHALL CONFORM TO ASTM A-325. IN BOLTING TYPE CONNECTIONS WITH THREADS ARE NOT REQUIRED BY DESIGN TO BE EXCLUDED FROM THE SHEAR PLAN OR WORKING IN TENSION. INSPECTION PRIOR TO OR DURING INSTALLATION WILL NOT BE REQUIRED. TENSION BOLTS PER AISC TENSION OF THE HOT METHOD (1/3 OF A TURN PAST A SLIGHT TIGHT CONDITION).  
ROUND OR SQUARE CUBE FOOTING - EMBEDMENT DEPTHS FOR FOOTINGS DO NOT APPLY TO LOADINGS WHERE WALLS OF THE HOLE WILL NOT STAND WITHOUT SUPPLEMENTAL SUPPORT OR WHERE UNCOMPACTED FILL OR CRUSHED FILL EXIST. DESIGN UTERON SOIL PRESSURE PER CRS TABLE M90-2 FOR CLASS 3 SOIL (SANDY GRAVEL) IS 400 LB/FT<sup>2</sup> (ALLOWABLE LATERAL SOIL PRESSURE HAS A FACTOR OF 2)  
EXTEND COLUMN PIPE TO BOTTOM OF FOOTING (2" CONCRETE COVER REVD).

THE DESIGNER SHALL VERIFY ALL DIMENSIONS AND CONDITIONS IN THE FIELD BEFORE ERECTION AND NOTIFY ENGINEER OF ANY DISCREPANCIES. DESIGNERS SHALL NOTIFY ENGINEER IF STRUCTURE IS LOCATED NEAR BUILDINGS.  
THE ABOVE NOTES AND SPECIFICATIONS SHALL MEET OR EXCEED ALL STATE AND LOCAL CODE REQUIREMENTS BEFORE ERECTION.  
THE UNDERSIGNED ENGINEER WILL NOT SUPERVISE THE FABRICATION OR ERECTION OF THIS STRUCTURE.

THIS PRINT IS THE PROPERTY OF METAL-WELD SPECIALTIES, INC. IT HAS BEEN PROVIDED FOR PERMIT PURPOSE ONLY. REPRODUCTION IS PROHIBITED WITHOUT WRITTEN CONSENT FROM METAL-WELD SPECIALTIES, INC.

ALTERNATE FOR POSTER FACE SIGNS REPLACE STRINGERS WITH CLIP ANGLES PER DETAIL 'G' ON SHEET 2.

H.A.G.L.	COLUMN PIPE SIZE (35 Ksf)	FOOTING SIZE			
		ROUND DIA.	DEPTH	LENGTH (L)	CUBE WIDTH (W) DEPTH
5'-0"	20" x 198	3'-0"	9'-6"	6'-0"	5'-0" 7'-0"
10'-0"	20" x 203	3'-0"	10'-6"	6'-0"	5'-0" 7'-6"
15'-0"	20" x 239	3'-0"	11'-6"	6'-0"	5'-0" 8'-0"
20'-0"	20" x 281	3'-0"	12'-6"	6'-0"	5'-0" 8'-6"
25'-0"	20" x 344	3'-0"	12'-6"	6'-0"	5'-0" 9'-0"
30'-0"	20" x 406	3'-0"	13'-6"	6'-0"	5'-0" 9'-6"
35'-0"	20" x 469	3'-0"	14'-6"	6'-0"	5'-0" 9'-6"
40'-0"	20" x 500	3'-0"	14'-6"	6'-0"	5'-0" 10'-0"
45'-0"	20" x 562	3'-0"	15'-6"	6'-0"	5'-0" 10'-0"
50'-0"	20" x 625	3'-0"	16'-6"	6'-0"	5'-0" 10'-6"
55'-0"	20" x 688	3'-0"	16'-6"	6'-0"	5'-0" 10'-6"
60'-0"	20" x 750	3'-0"	17'-0"	6'-0"	5'-0" 11'-0"

CUSTOMER: 30 PSF WIND, 400 PSF/FT SOILS

SIGN LOCATION: 12 x 24 CENTER MOUNT, BACK TO BACK & 20" V-BUILD

**METAL-WELD SPECIALTIES, INC.**

PAINT: DR. CG. CH. SL.

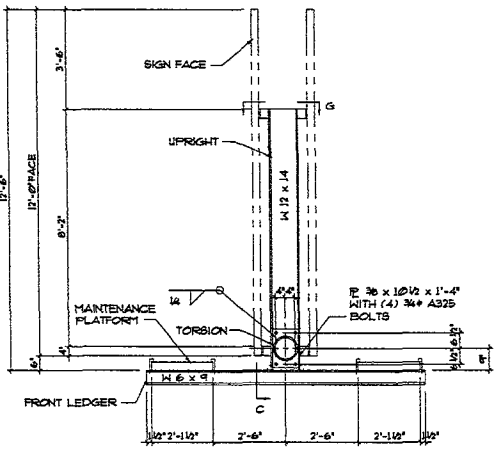
HOLE SIZE: 5/23/05

DATE: 5/23/05

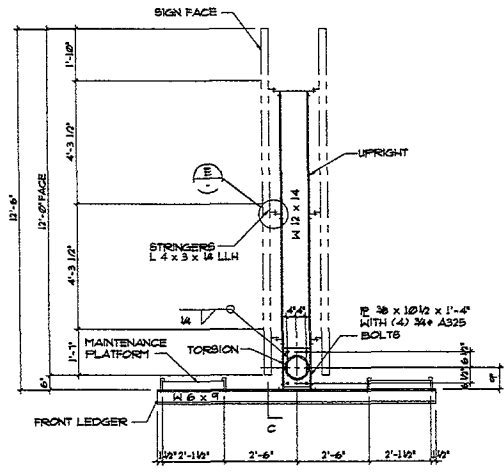
JOB NO.: 0528-00 (A)

SHEET NO.: 1 OF 2

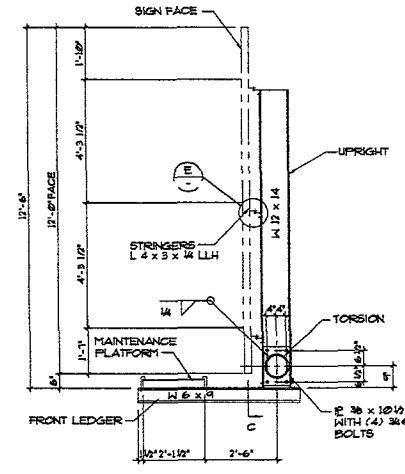
5117 N. 23<sup>rd</sup> Ave. Peoria, AZ 85605  
602-999-1117 Fax 602-999-1112  
Sewer Waterford Plaza, Suite 400  
500 West Monroe Street, Henderson, NV 89015  
602-525-1113 Fax 602-522-9490



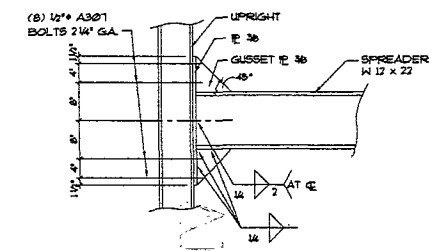
SECTION THROUGH BACK TO BACK SIGN  
(POSTER FACE)



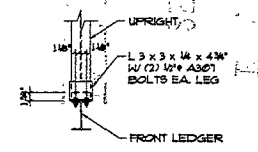
SECTION THROUGH BACK TO BACK SIGN  
(PAINT FACE)



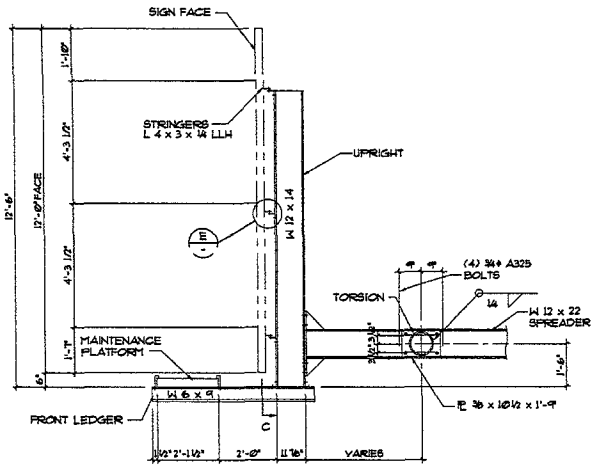
SECTION THROUGH SINGLE FACE SIGN



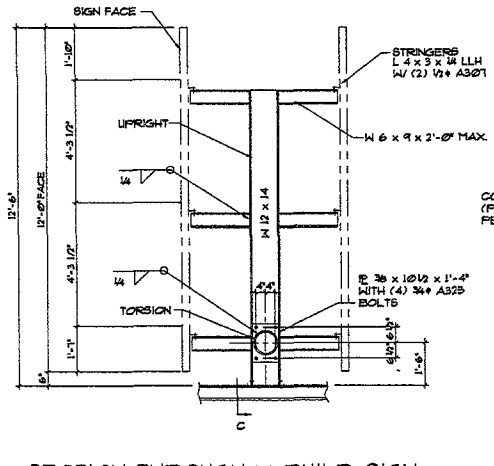
UPRIGHT - SPREADER - CONNECTION



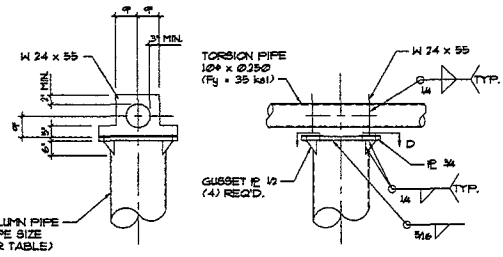
DETAIL C



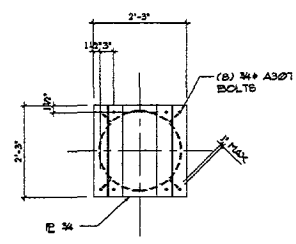
SECTION THROUGH V-BUILD SIGN  
(OPEN END)



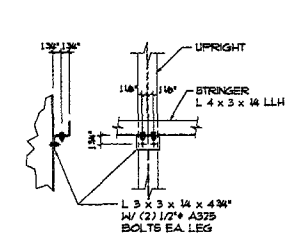
SECTION THROUGH V-BUILD SIGN  
(NARROW END)



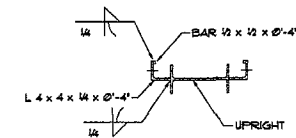
COLUMN-TORSION CONNECTION



SECTION D



DETAIL E



DETAIL G  
(POSTER FACE CLIP ANGLES)

CUSTOMER		30 PSF WIND 400 PSF/FT SOILS	
SIGN LOCATION		12 x 24 CENTER MOUNT BACK TO BACK & 20' V-BUILD	
		PAINT	DR. CN
8117 N. 81 <sup>st</sup> Ave. Phoenix, AZ 85044 602-979-1111 Fax: 602-979-9722 8000 W. McDowell Road, Suite 400 85026-3264 Phoenix, AZ 85043 602-526-4113 Fax: 602-526-9490		HOLE SIZE	DATE: 2/9/00
		JOB NO. 0328-00 (B)	SHEET NO. 2 OF 2