



DREAM DESIGN INTERNATIONAL, INC.
CIVIL, STRUCTURAL, AND LAND DEVELOPMENT ENGINEERS

September 8, 2006

Growth Management Department
300 Sixth Street
Rapid City, SD 57701

Re: Letter of Intent, New Park/McMahon Subdivision – Planned Residential
Development, I/F

Growth Management Department:

The follow pertains to Lots 1 & 2 of Tract A and Lots 1-7 of Tract B All in McMahon
Subdivision; Lots 1-6 of Tract A and Lots 7 & 8 of Tract B all of Lot 1 of New Park
Subdivision; located in Section 24, T2N, R7E, BHM, Rapid City, Pennington County,
South Dakota.

Building materials will consist of concrete foundation, timber structure for exterior and
interior walls, pre-engineered roof & floor trusses. Finishes include either pre-finished
horizontal hard board lap siding, steel siding or vinyl siding with earth tone colors, stone
and/ or brick accents, roof will consist of fiberglass shingles. A reduced front yard
setback of 18' to the garage and 15' to the living area are being requested.

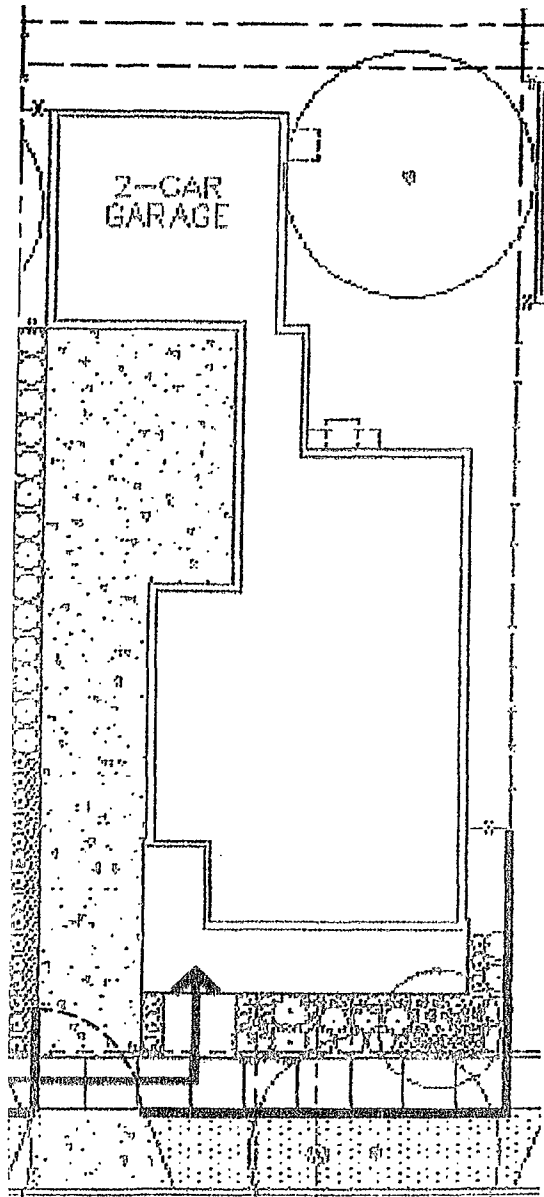
Sincerely,
Dream Design International, Inc.

Renee Catron-Blair
Project Coordinator

RECEIVED

SEP 08 2006

Rapid City Growth
Management Department

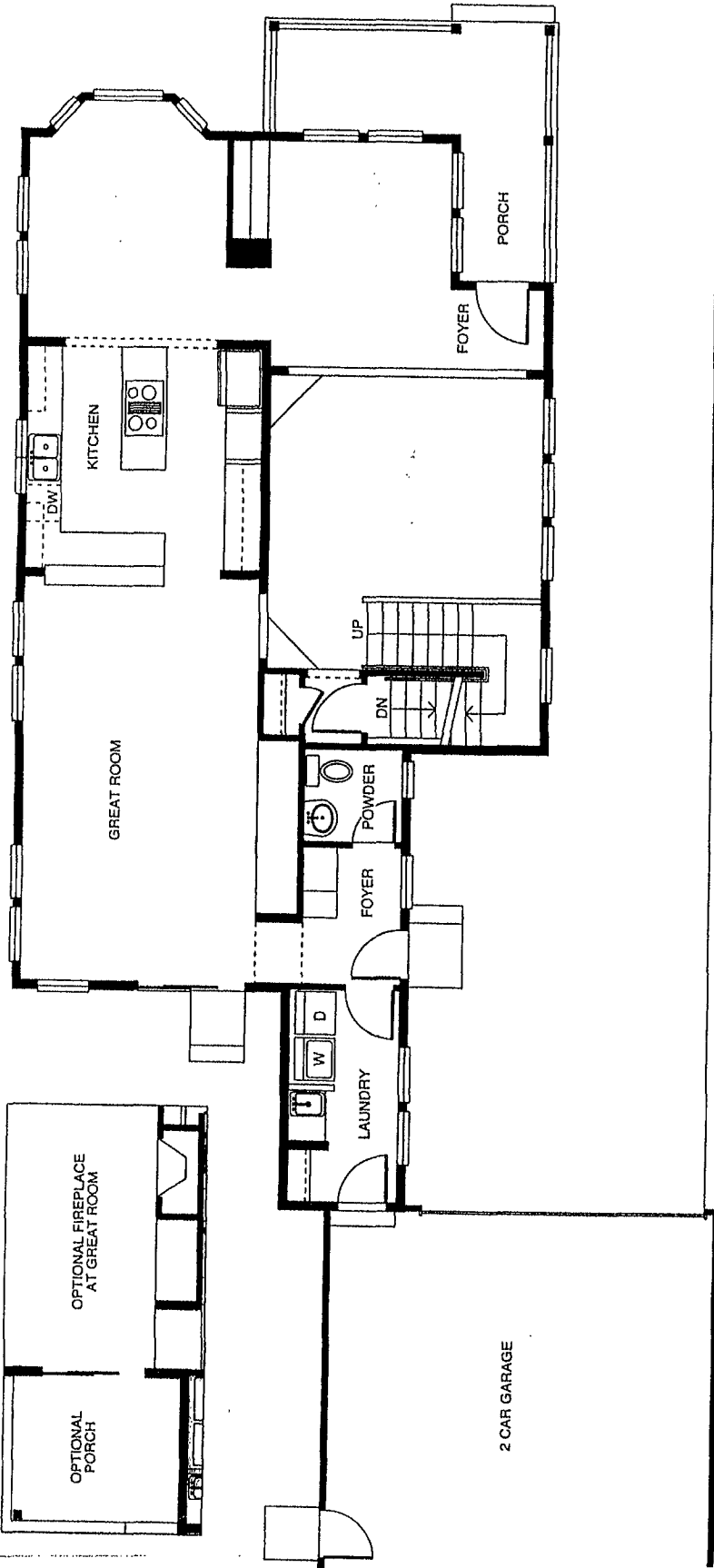


RECEIVED

SEP 08 2006

Rapid City Growth
Management Department

First Floor Options

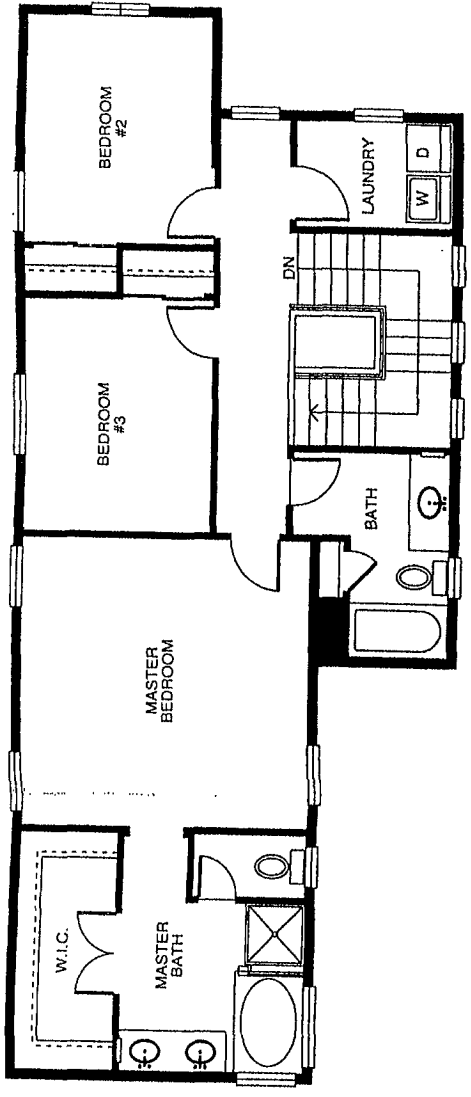


Rapid City Growth
Management Department

SEP 08 2006

RECEIVED

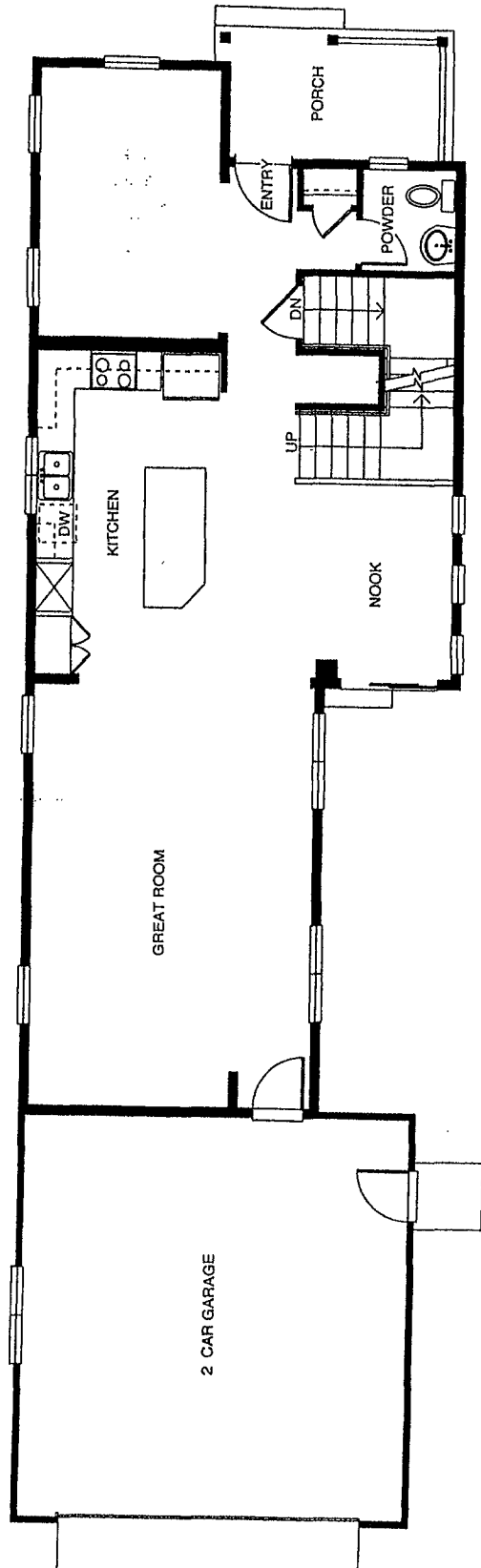
option 1 Connector



First Floor Options



OPTIONAL FIREPLACE AT GREAT ROOM

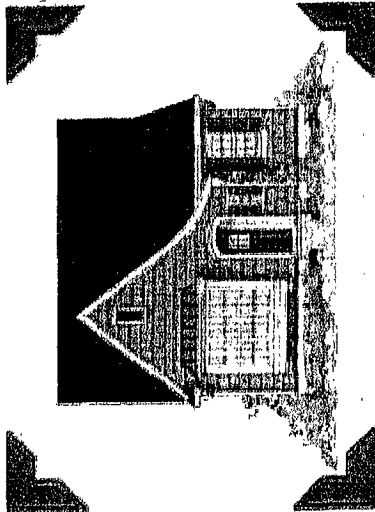


Rapid City Growth Management Department

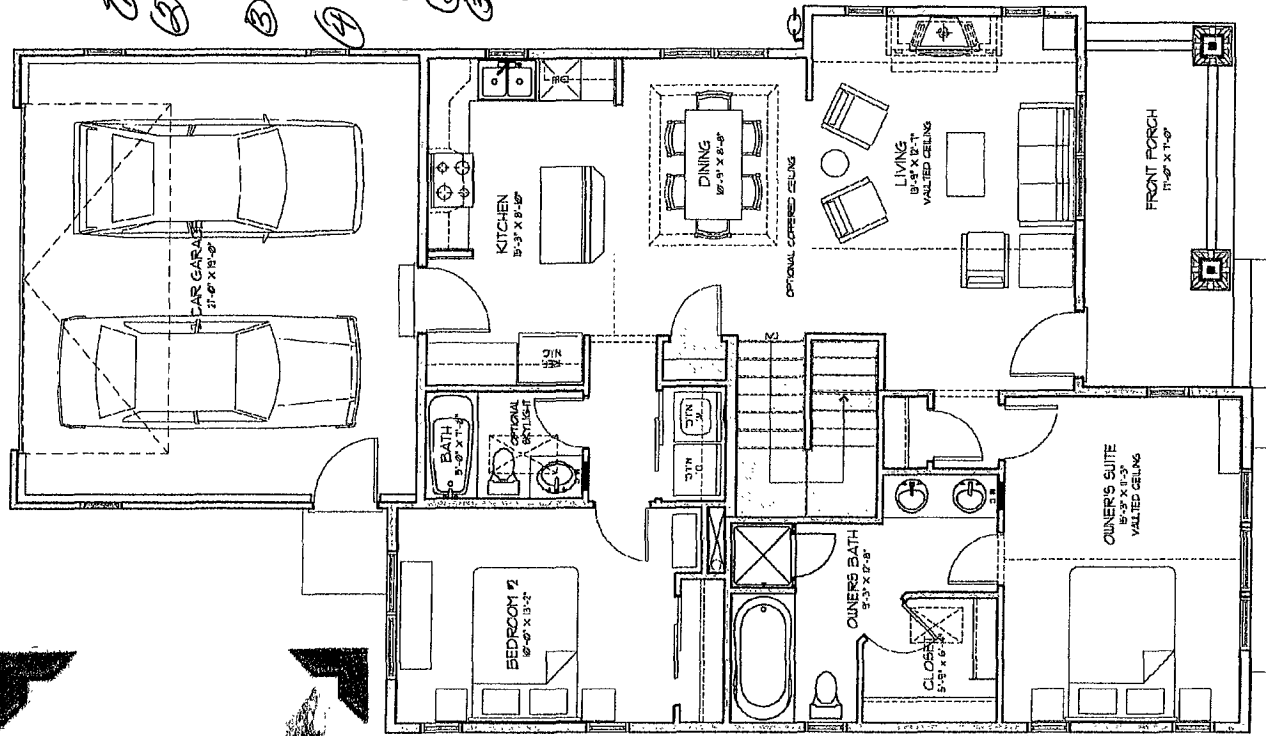
SEP 08 2006

RECEIVED

Option 2 Connector



1186 sq. feet



Main Level

Extra Options

- ① Bay-sitting windows
- ② Wrap around porch P. 59. foot
- ③ Extra door on toilet.
- ④ Garage Connector
 - ① Brezeway
 - ② great room
 - ③ office / bedroom

RECEIVED

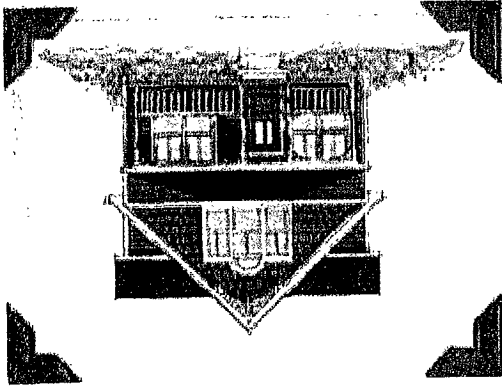
SEP 08 2006

Rapid City Growth Management Department

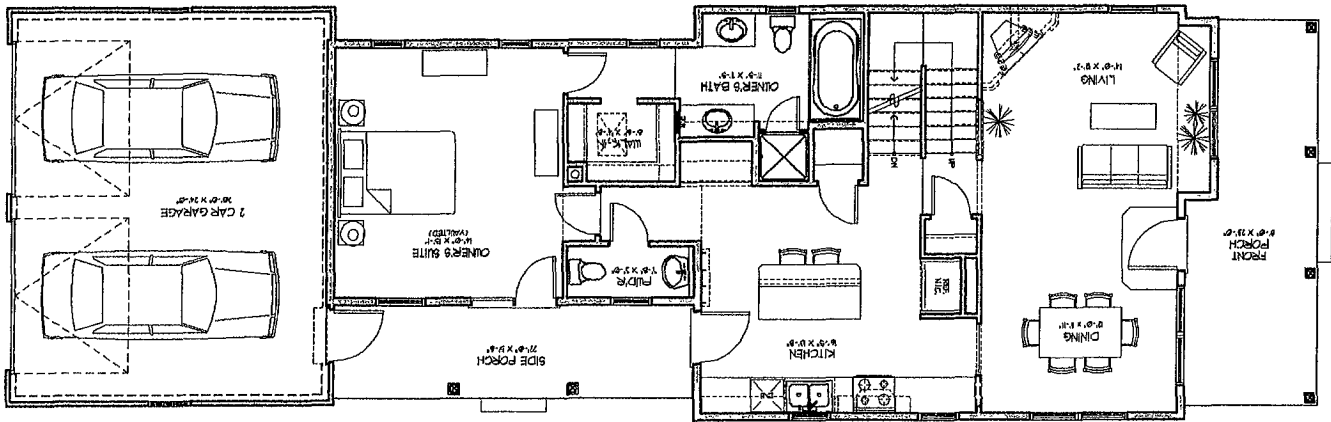
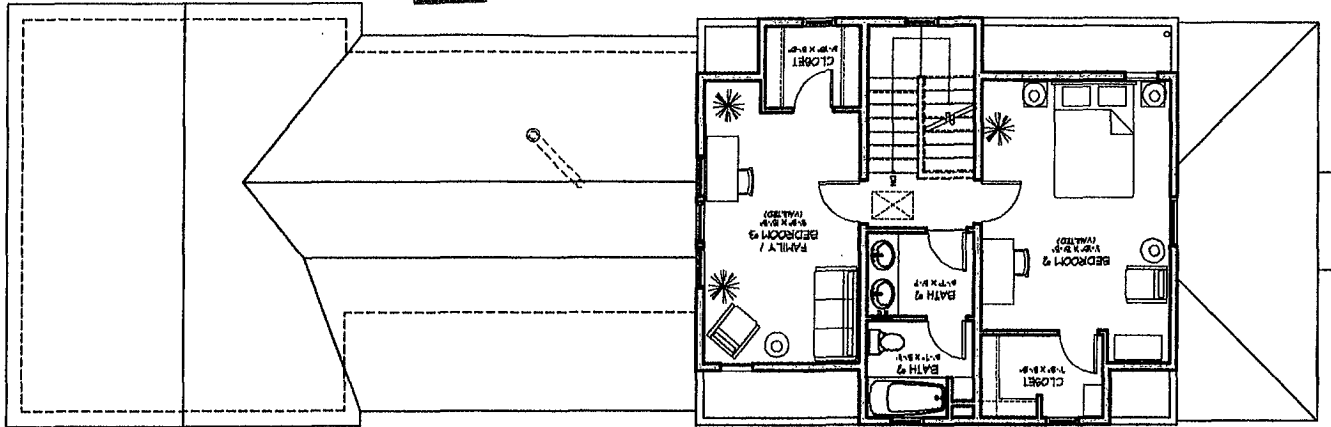
Rapid City Growth
Management Department

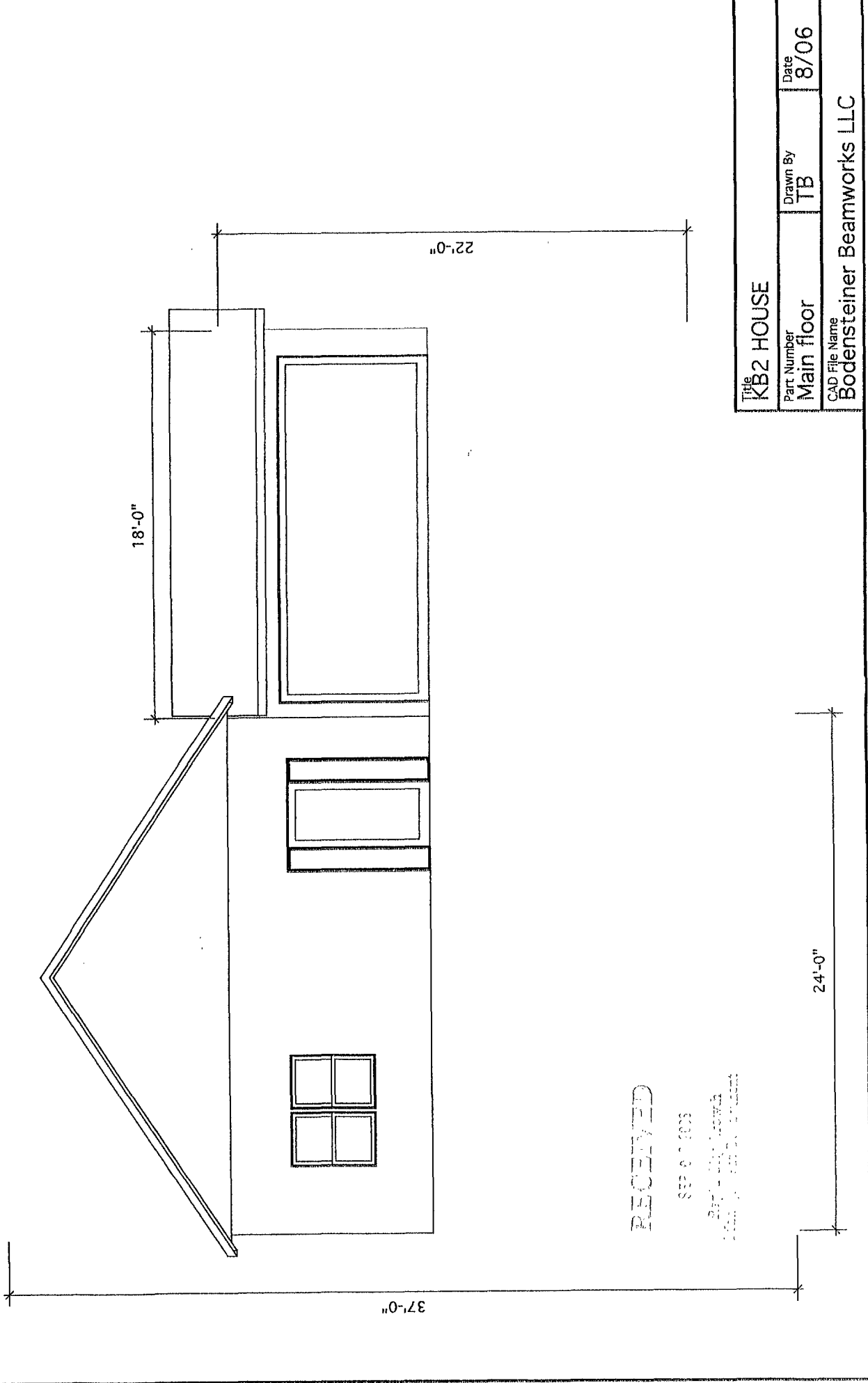
SEP 0 8 2006

RECEIVED



1776 sq. feet

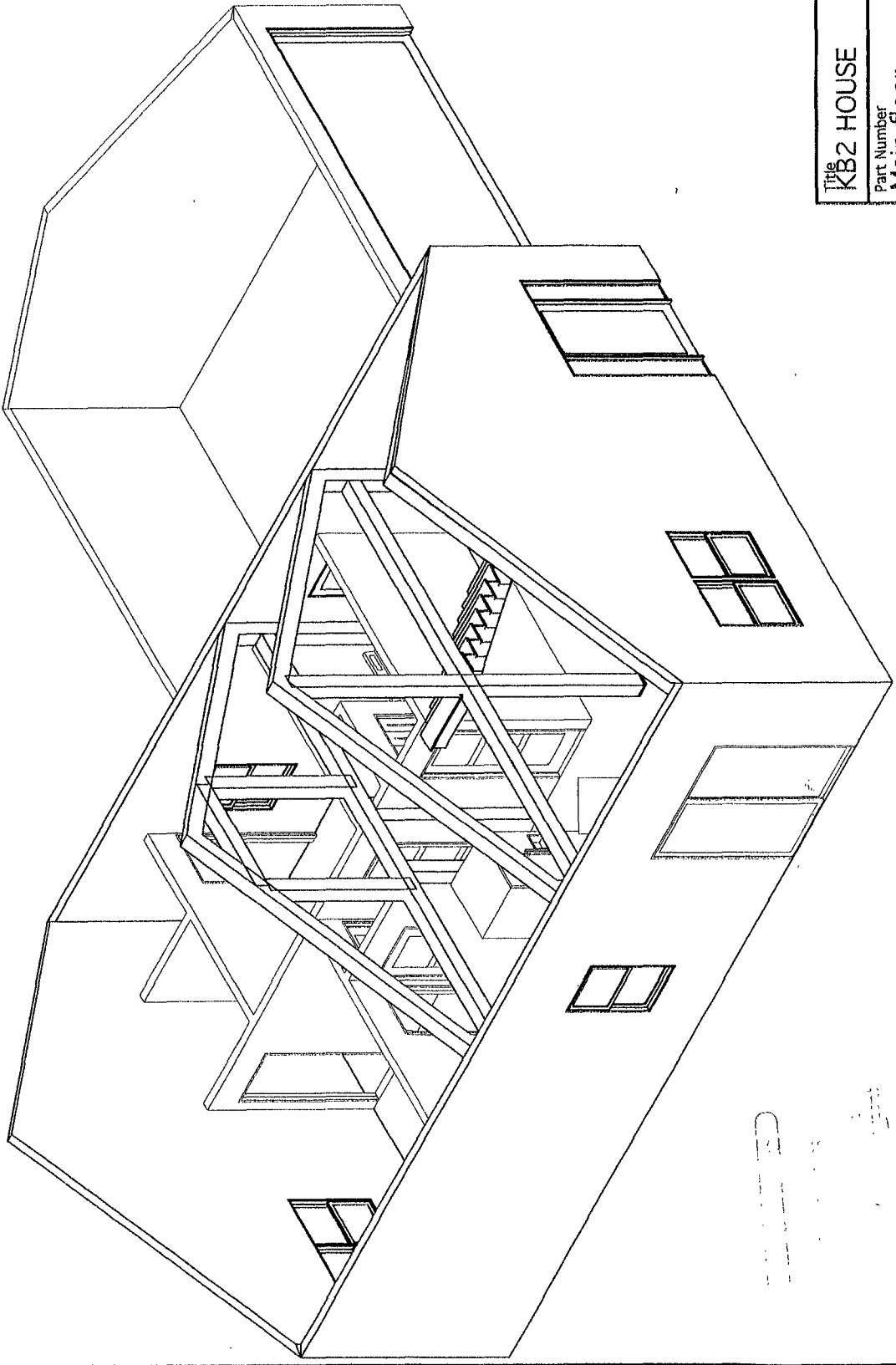




RECEIVED

SEP 6 2006
 Bodensteiner Beamworks
 10000 100th Ave S, Suite 100
 Golden, CO 80401

Title KB2 HOUSE		Drawn By TB	Date 8/06
Part Number Main floor		CAD File Name Bodensteiner Beamworks LLC	



The KB2 HOUSE

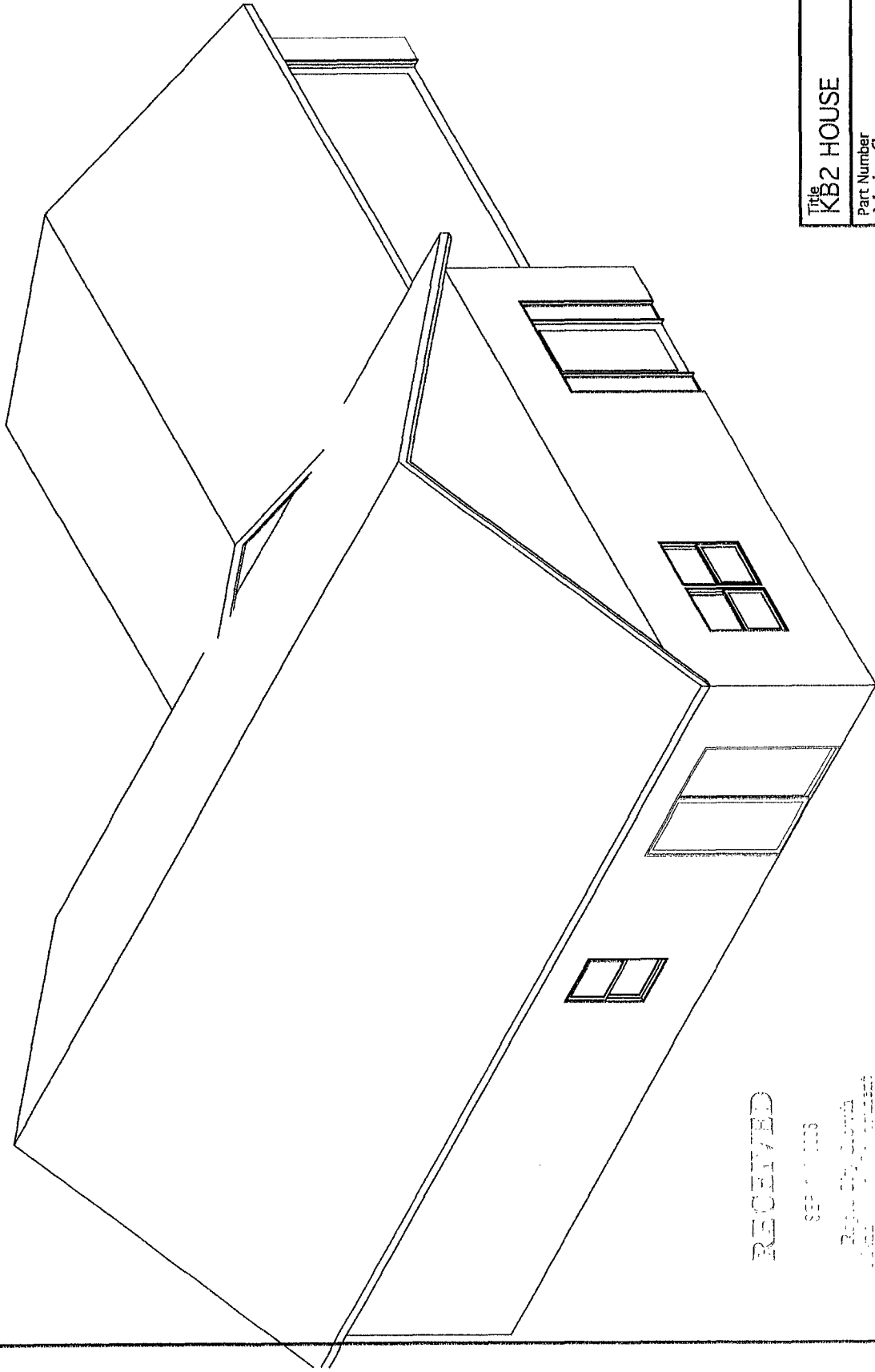
Part Number
Main floor

Drawn By
TB

Date
8/06

CAD File Name

Bodensteiner Beamworks LLC



Title
KB2 HOUSE

Part Number
Main floor

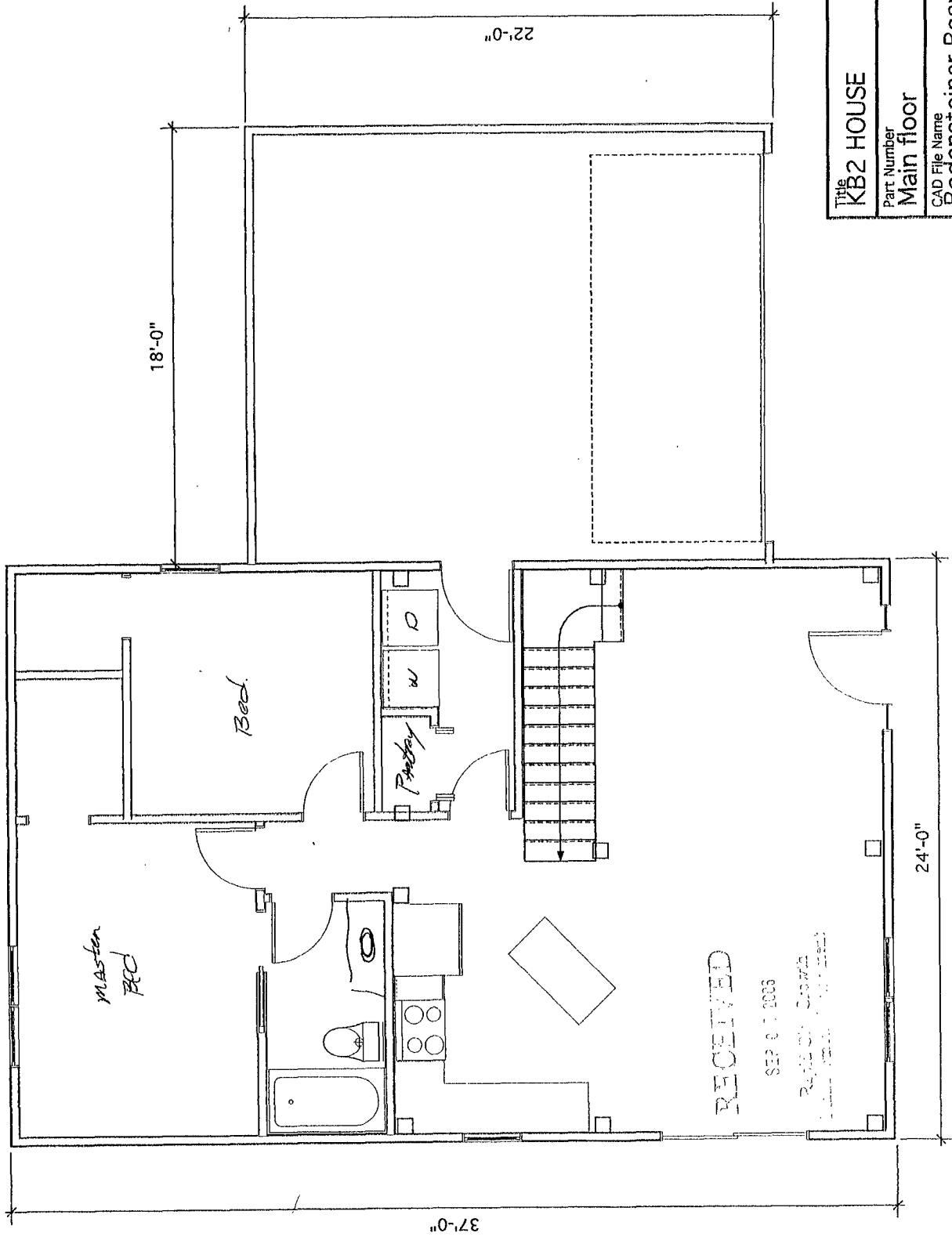
Date
8/06

CAD File Name
Bodensteiner Beamworks LLC

RECEIVED

SEP 11 2006

Raymond J. Bodensteiner
11111 11111 11111 11111 11111



For add garage space.
 finished beam
 post +

The KB2 HOUSE

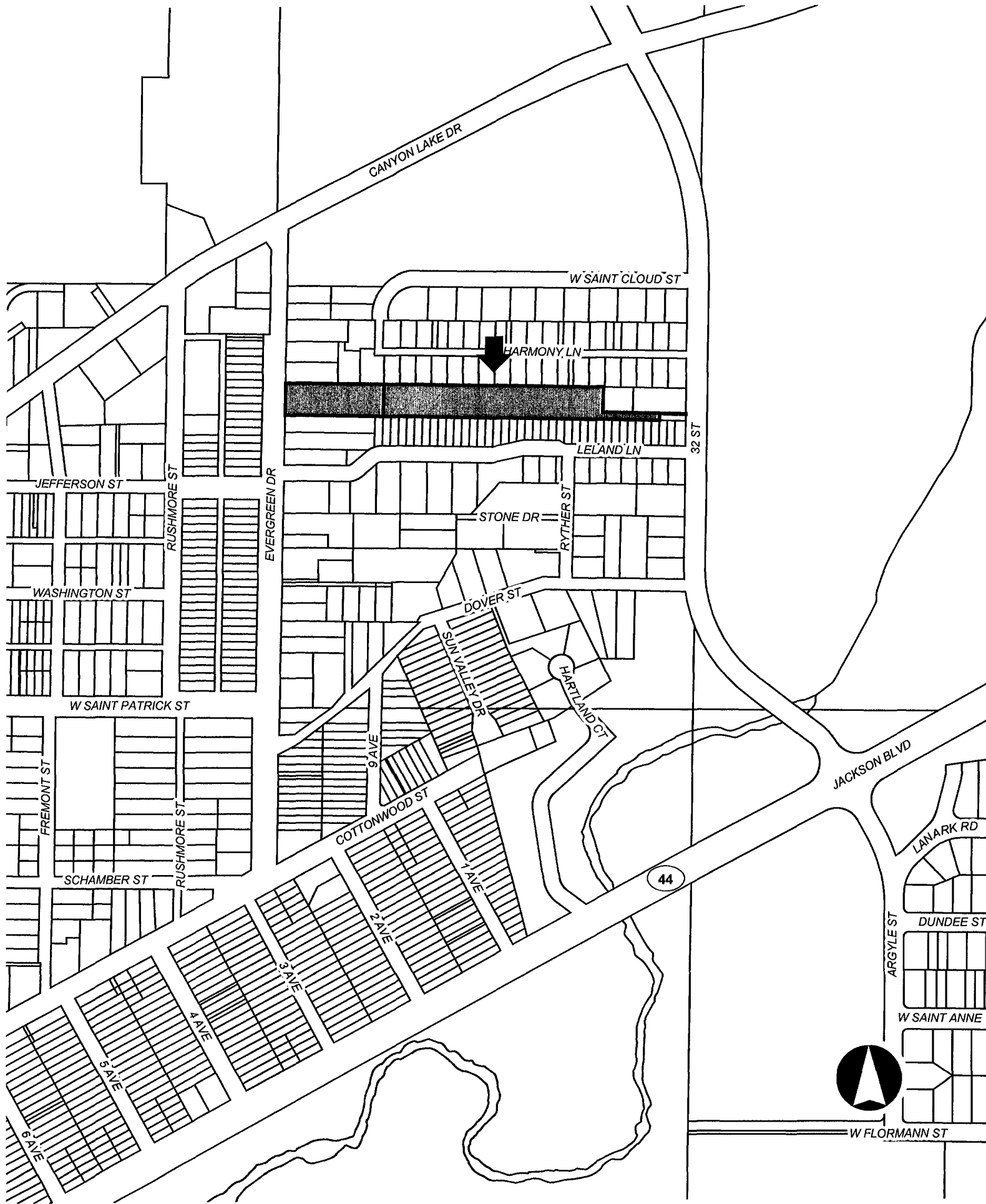
Part Number
Main floor

Drawn By
TB

Date
8/06

CAD File Name
Bodensteiner Beamworks LLC

06PD070



32 ST

W SAINT CLOUD ST

HARMONY LN

LELAND LN

RYTHER ST

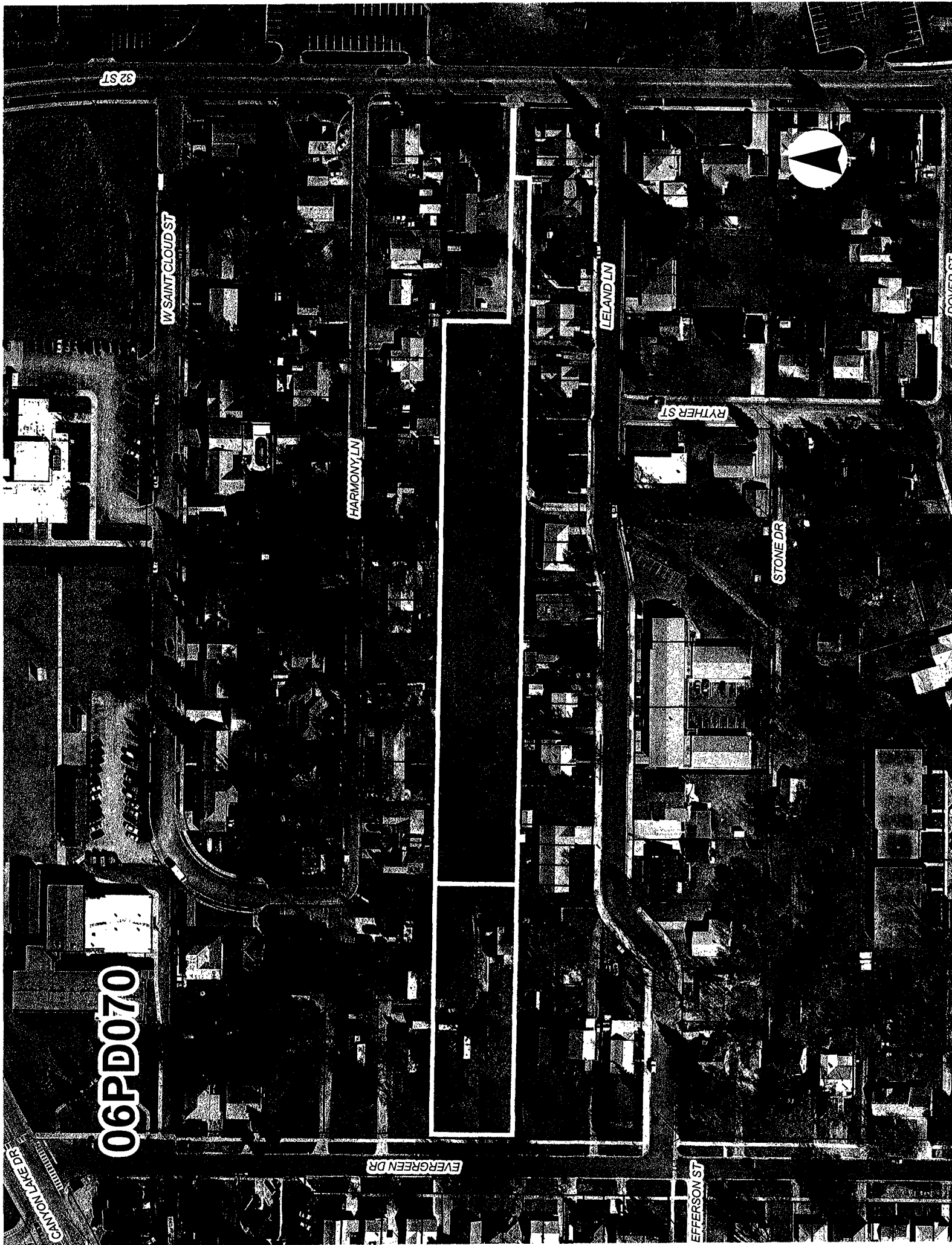
STONE DR

06PD070

EVERGREEN DR

EFFERSON ST

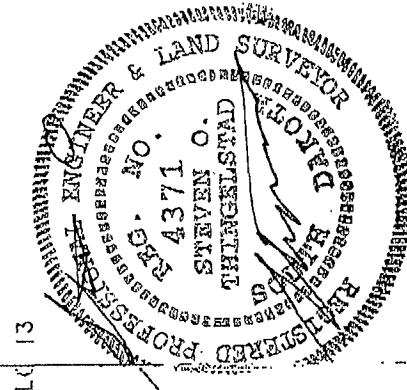
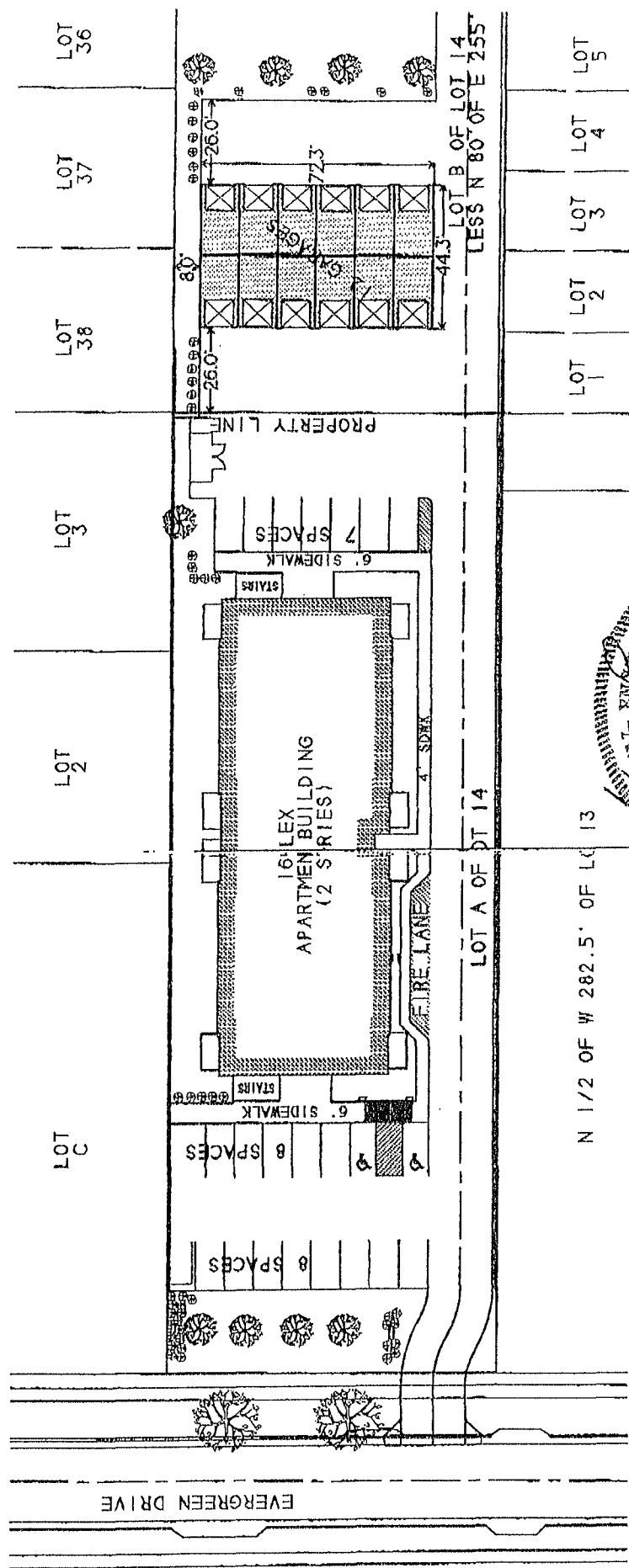
CANYON LAKE DR



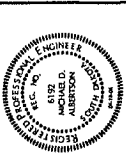
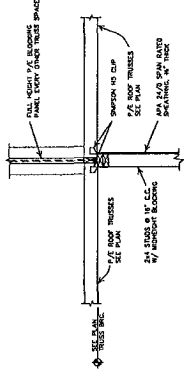
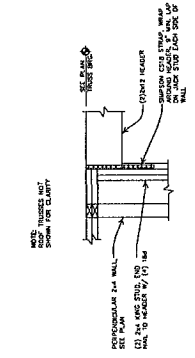
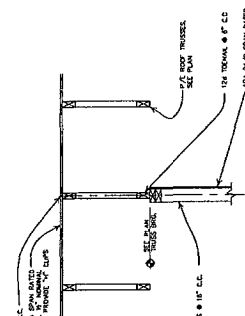
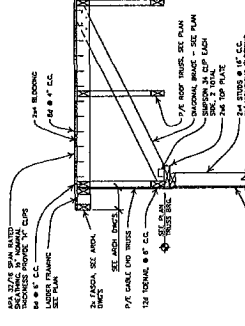
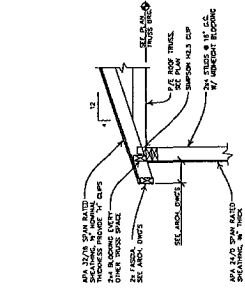
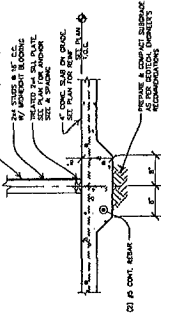
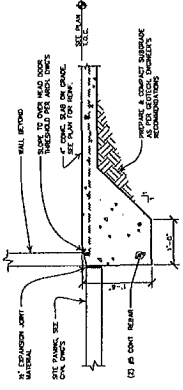
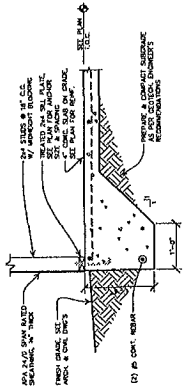


SCALE: 1" = 50'
SEPTEMBER 6, 2006

EXHIBIT
OF
PROPOSED GARAGES ON
LOT B OF LOT 14 LESS N 80' OF E 255'
ALL LOCATED IN SECTION 4,
T1N, R7E, HM, RAPID CITY
PENNINGTON COUNTY, SOUTH DAKOTA



PREPARED BY: STEVEN O. THINGELSTAD
BRITTON ENGINEERING & LAND SURVEYING, INC.
8035 BLACK HAWK ROAD, SUITE 5
BLACK HAWK, SOUTH DAKOTA 57718
TELEPHONE: (605) 716-7988



Albertson Engineering Inc.
2049 West Main
Rapid City, South Dakota 57702
605.343.5606

No.	Revision/Name	Date

J. Scull Construction
CONSTRUCTION SERVICES, INC.
J. SCULL CONSTRUCTION
803 INDUSTRIAL AVE.
R.A.P. 7656
RAPID CITY S.D. 57709-7636

PERFORMER APT. GARAGES
SECTIONS
RAPID CITY, SOUTH DAKOTA

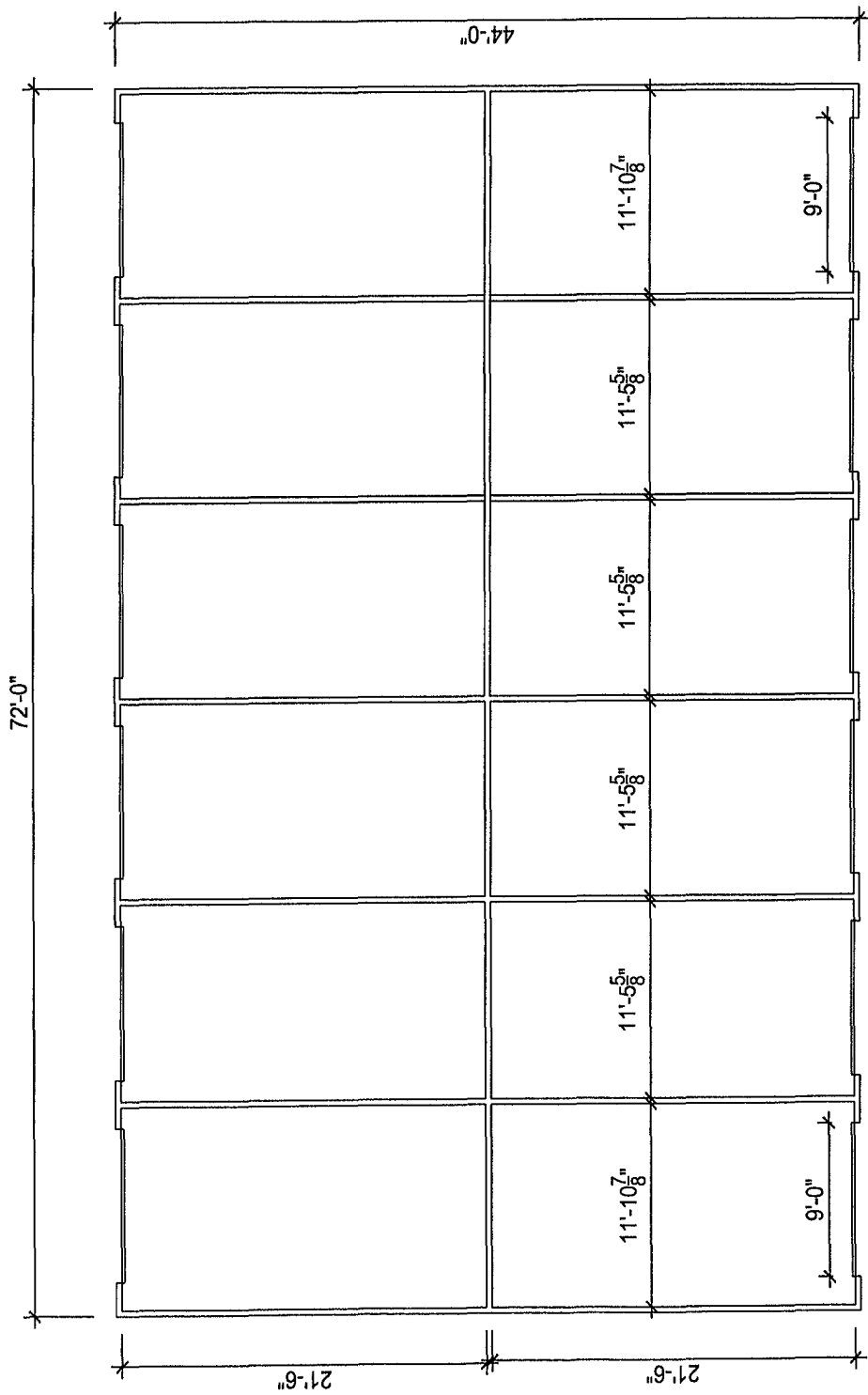
S2
04-18-06
1/4" = 1'-0"

General Notes	
No.	Revisions/Name
	Date

J. Scull
CONSTRUCTION
 J. SCULL CONSTRUCTION
 803 INDUSTRIAL AVE.
 BOX 7636
 RAPID CITY S.D. 57709-7636

Project Name and Address
 Evergreen Apt.
 RAPID CITY, SOUTH DAKOTA

A1	
Sheet No.	9/8/06
Scale	3/32" = 1'-0"



Floor Plan

Scale: 3/32" = 1'-0"

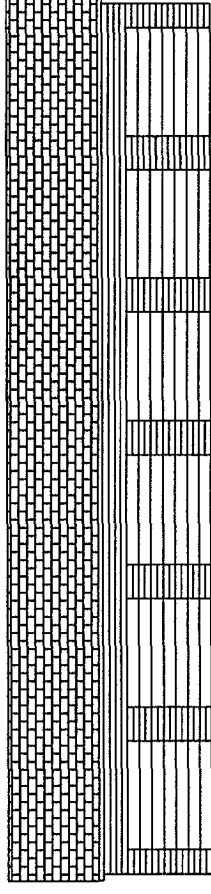
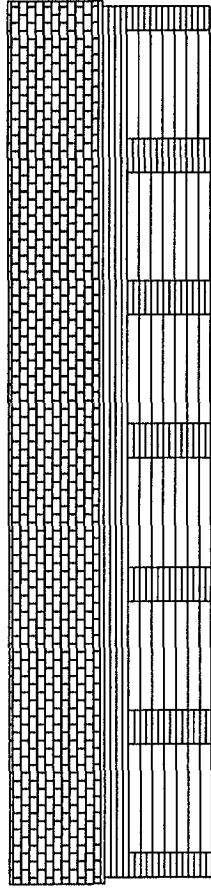
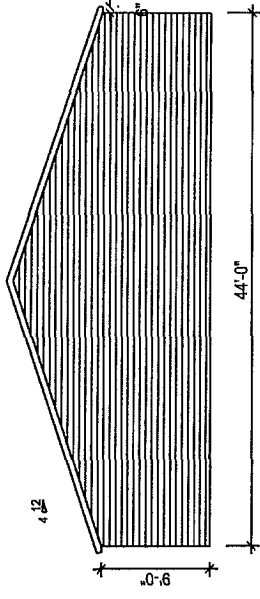
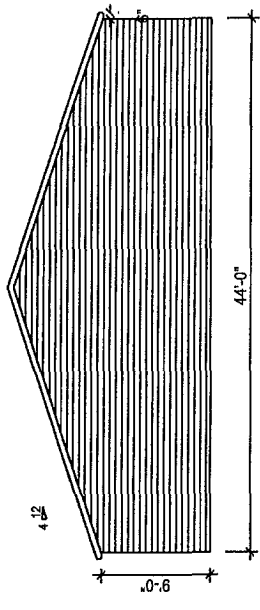
General Notes

No.	Revision/Measure	Date

J. Scull
CONSTRUCTION SERVICES, INC.
 J. SCULL CONSTRUCTION
 803 INDUSTRIAL AVE.
 BOX 7836
 RAPID CITY S.D. 57709-7636

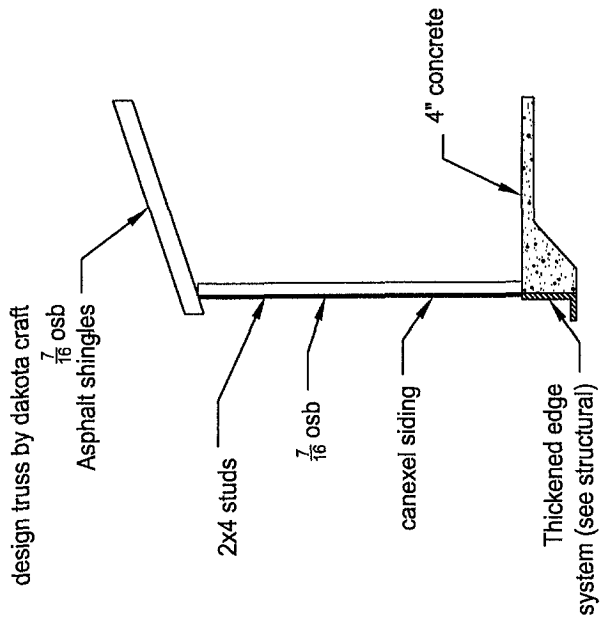
Project Name and Address
 Evergreen Apt.
 RAPID CITY, SOUTH DAKOTA

Sheet No. **A2**
 Date 9/8/08
 Scale 1/16" = 1'-0"



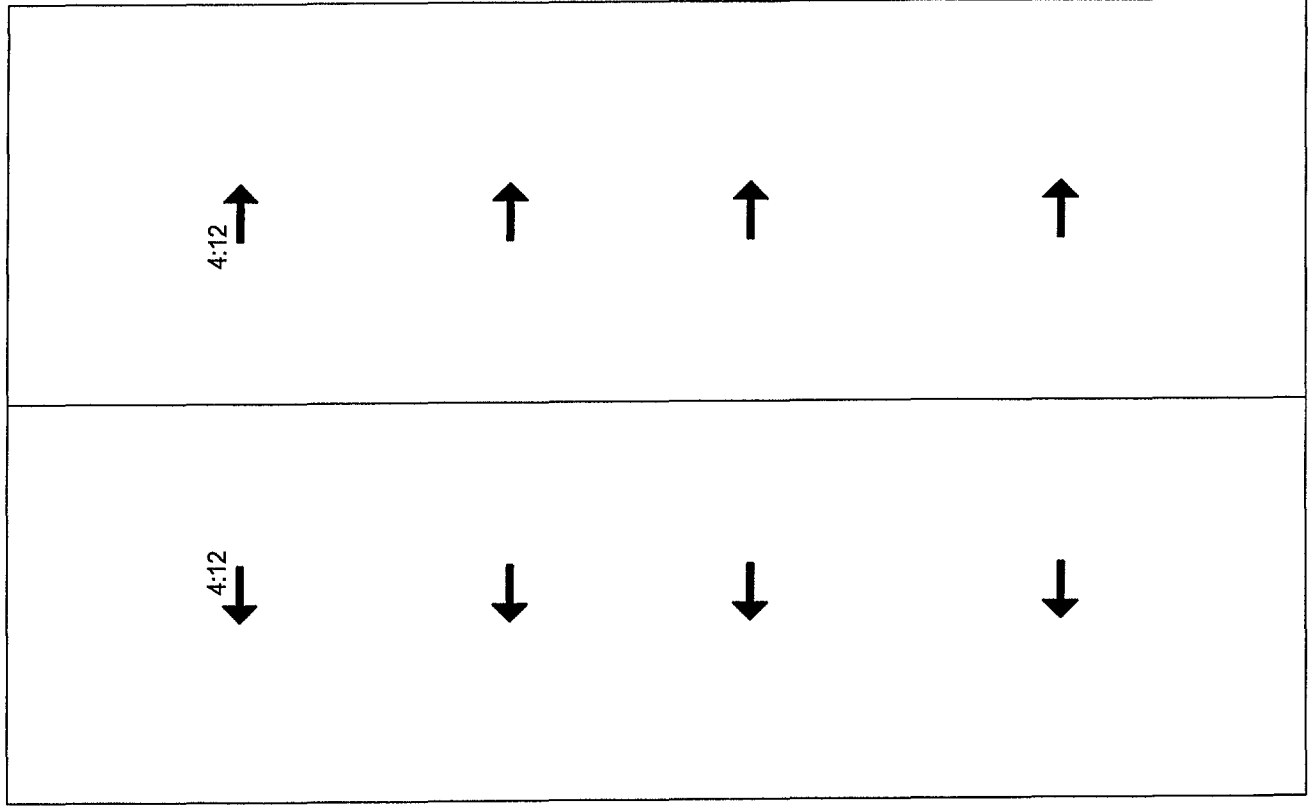
Elevations

Scale: 1/16" = 1'-0"



Wall Section

Scale: 3/16" = 1'-0"



Roof Plan

Scale: 3/32" = 1'-0"

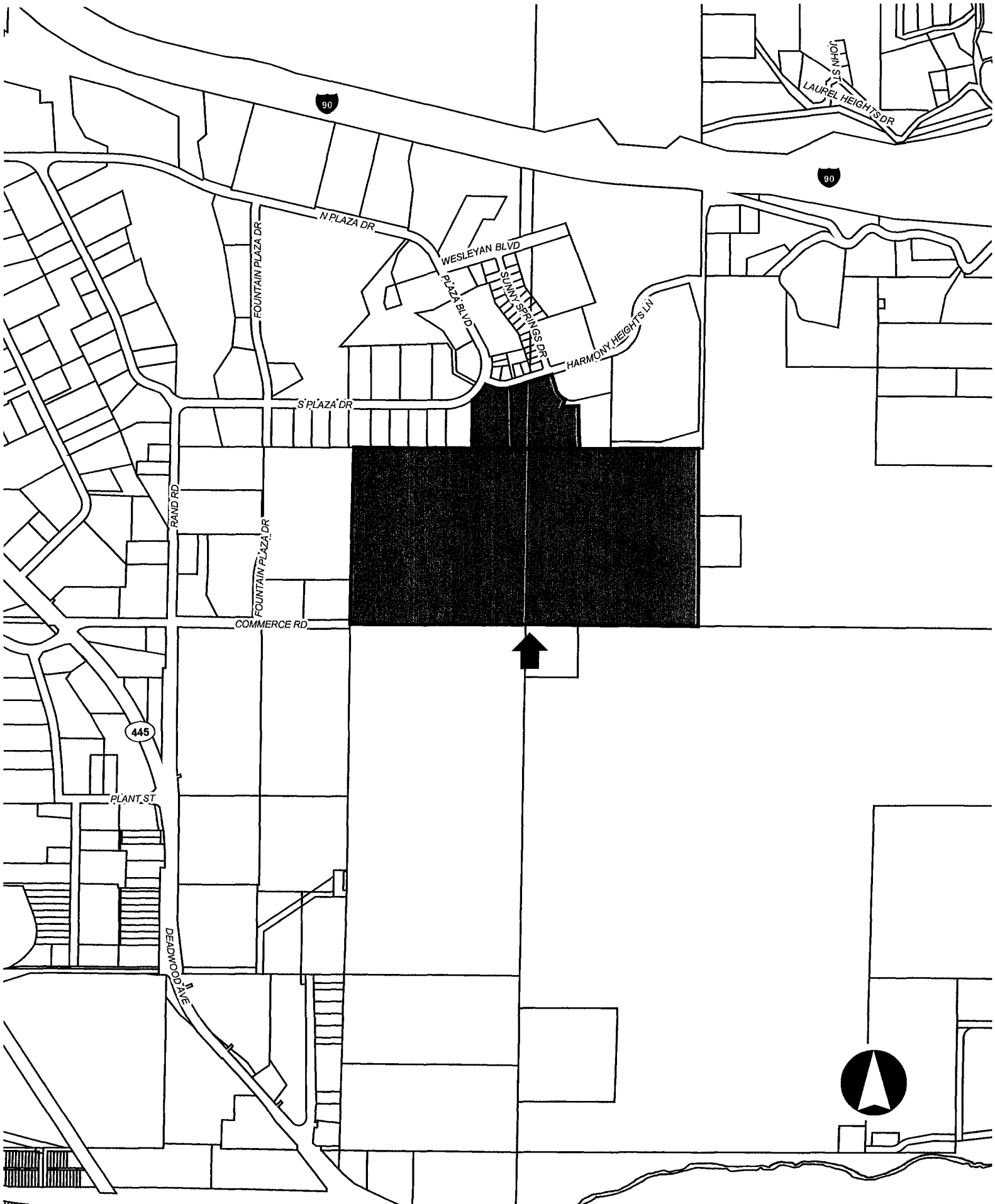
General Notes			
No.	Revision/Name	Date	

J. Scull
 J. SCULL CONSTRUCTION
 803 INDUSTRIAL AVE.
 BOX 7636
 RAPID CITY S.D. 57709-7636

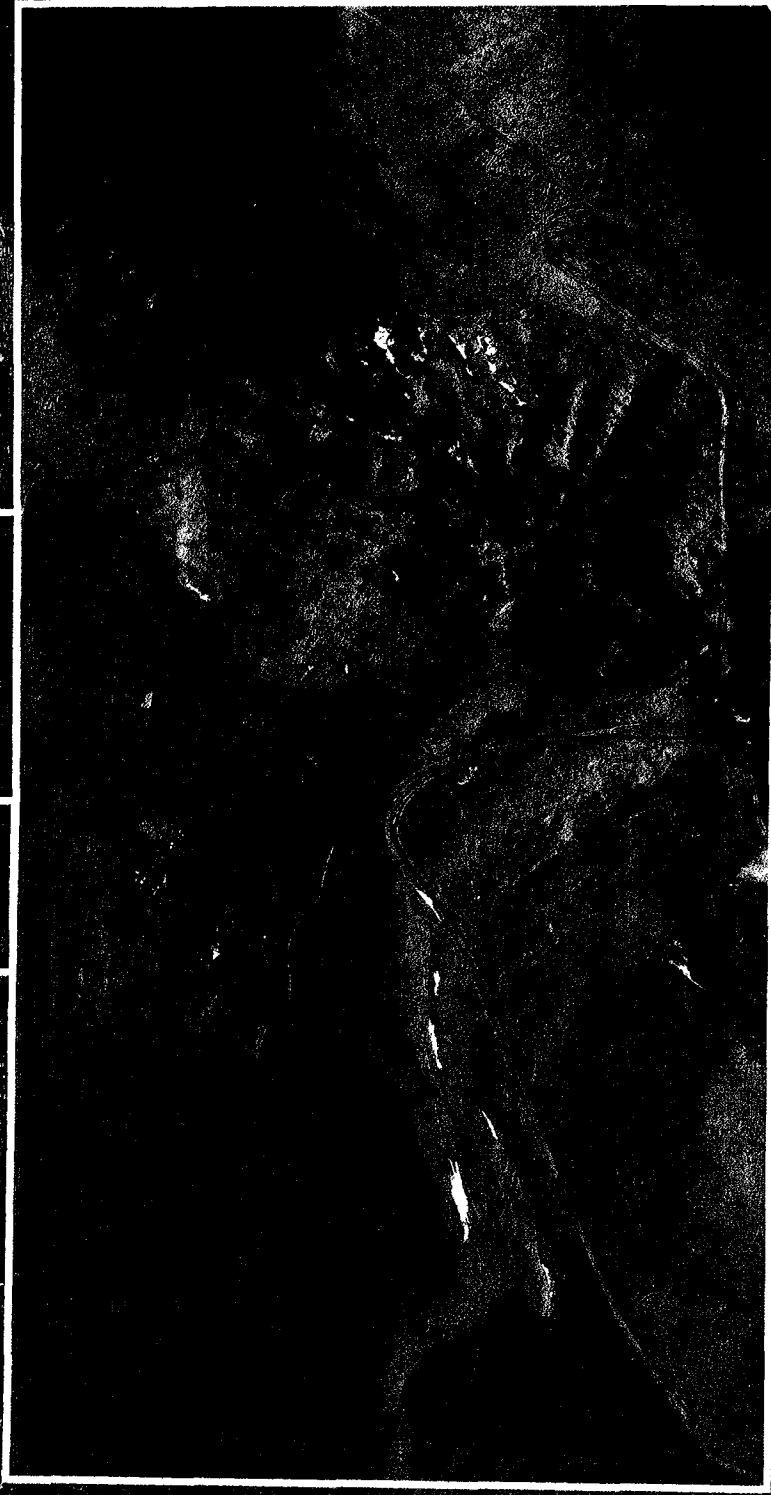
Project Name and Address
 Evergreen Apt.
 RAPID CITY, SOUTH DAKOTA

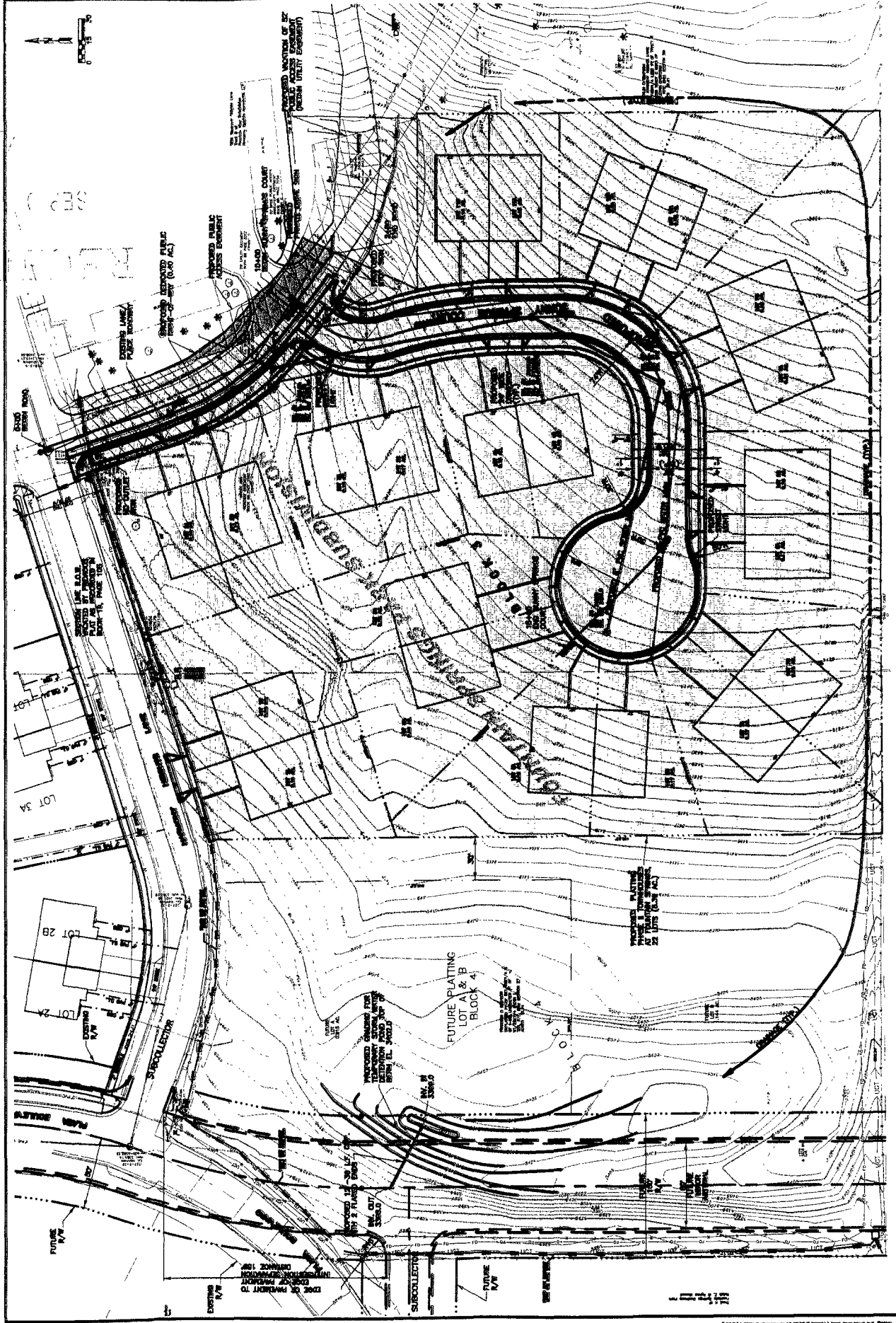
Sheet
A3
 Date: 9/6/06
 Scale: 3/32" = 1'-0"

06CA033



06GA033





1800 West Fulton Street
 Rapid City, SD 57702
 Phone: (605) 341-7800
 Fax: (605) 341-7804
 www.cetecengineering.com

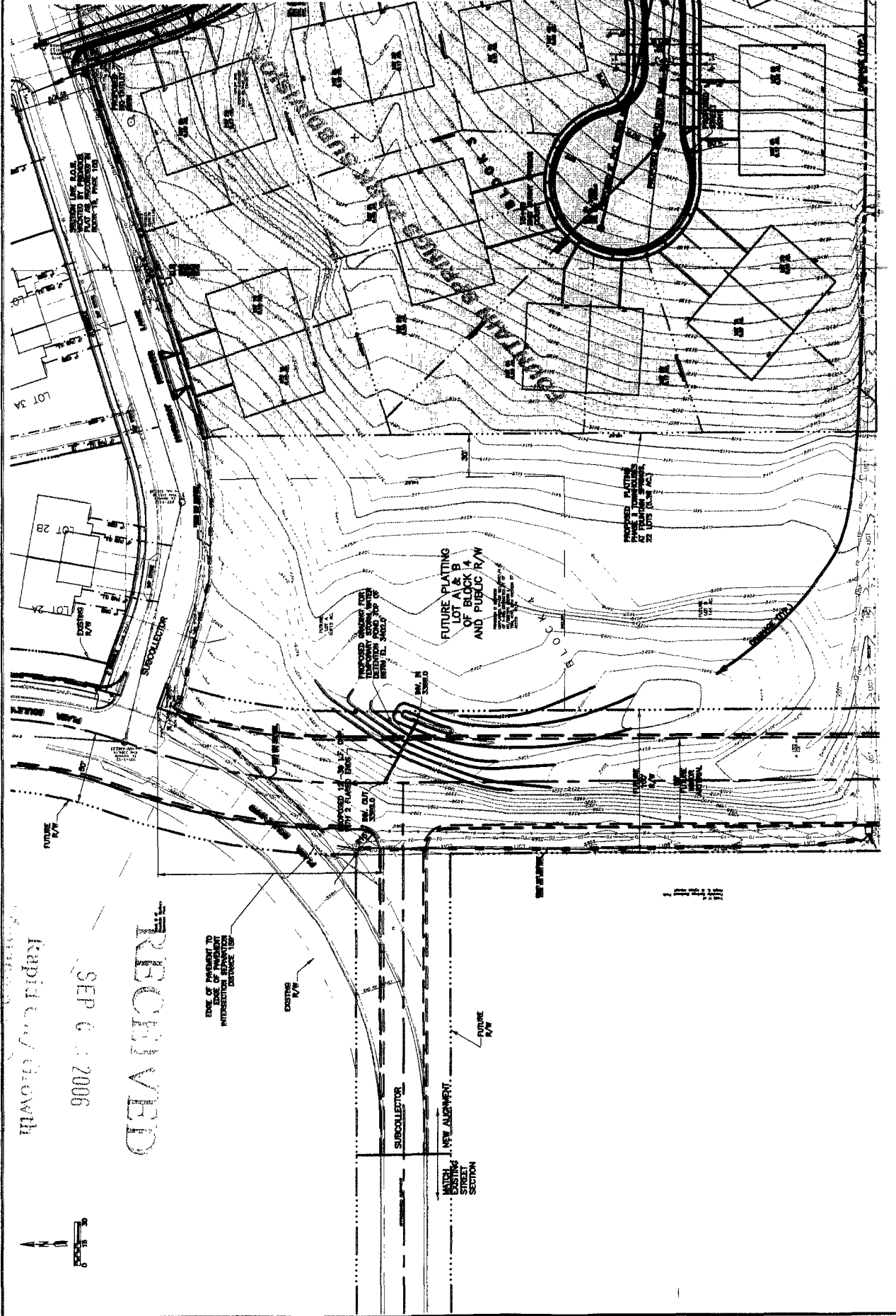
celec

DATE	09/27/06
APPROVED	X
DESIGNED	JL
CHECKED	JL
DESIGNED	JL

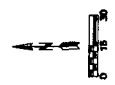
WATER PLAN FOR
 FUTURE PLAZA BLDG.
 UNDER AIRMAIL

PROJECTS AT POUNTAIN SPRINGS I
 RAPID CITY, SOUTH DAKOTA

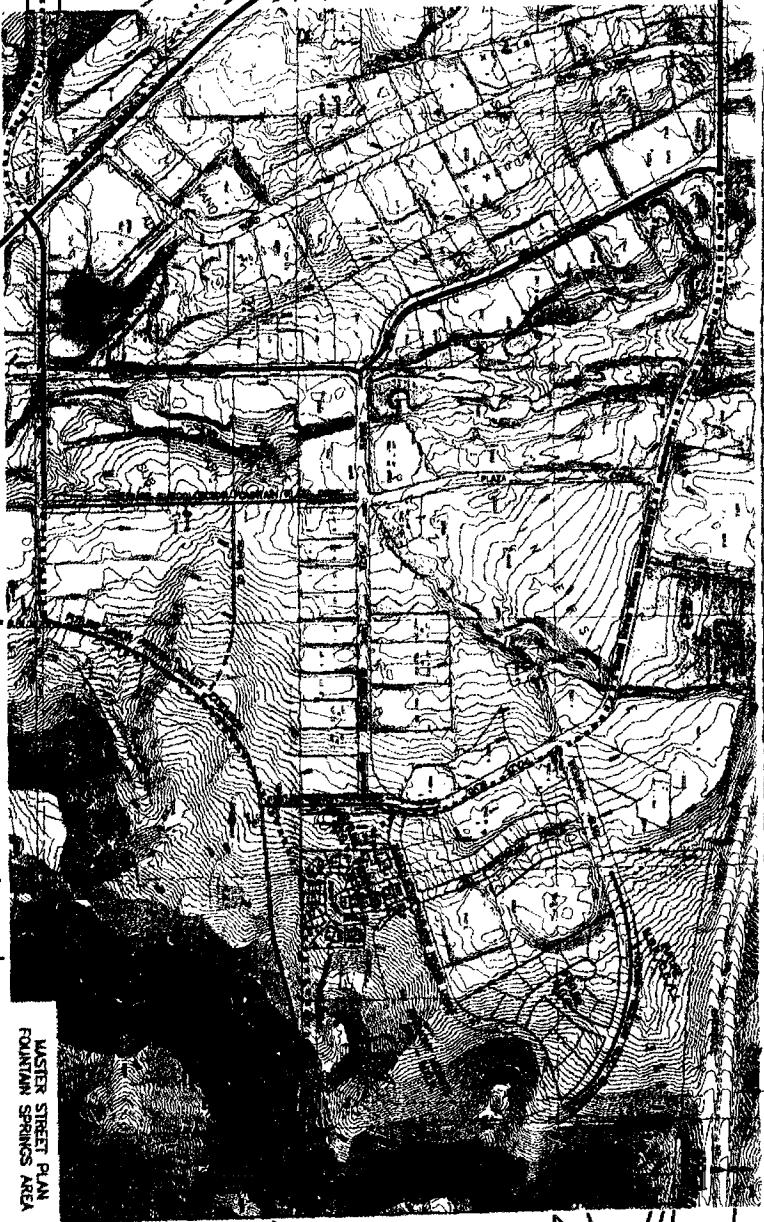
SHEET DESCRIPTION
 SHEET 1



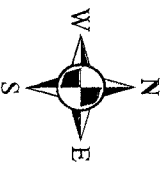
SEP 6 2006
 Rapid City Growth
 ROOM VED



THIS PLAN IS THE PROPERTY OF CELEC ENGINEERING AND ARCHITECTURE. IT IS TO BE USED ONLY FOR THE PROJECT AND SITE SPECIFICALLY IDENTIFIED HEREON. IT IS NOT TO BE REPRODUCED, COPIED, OR TRANSMITTED IN ANY FORM OR BY ANY MEANS, ELECTRONIC OR MECHANICAL, INCLUDING PHOTOCOPYING, RECORDING, OR BY ANY INFORMATION STORAGE AND RETRIEVAL SYSTEM, WITHOUT THE WRITTEN PERMISSION OF CELEC ENGINEERING AND ARCHITECTURE.



MASTER STREET PLAN
FOUNTAIN SPRINGS AREA



1 inch equals 1,000 feet

OMAHA ST

AROLDA ST

MOUNT RUSHMORE RD

06SR065

DEPH ST

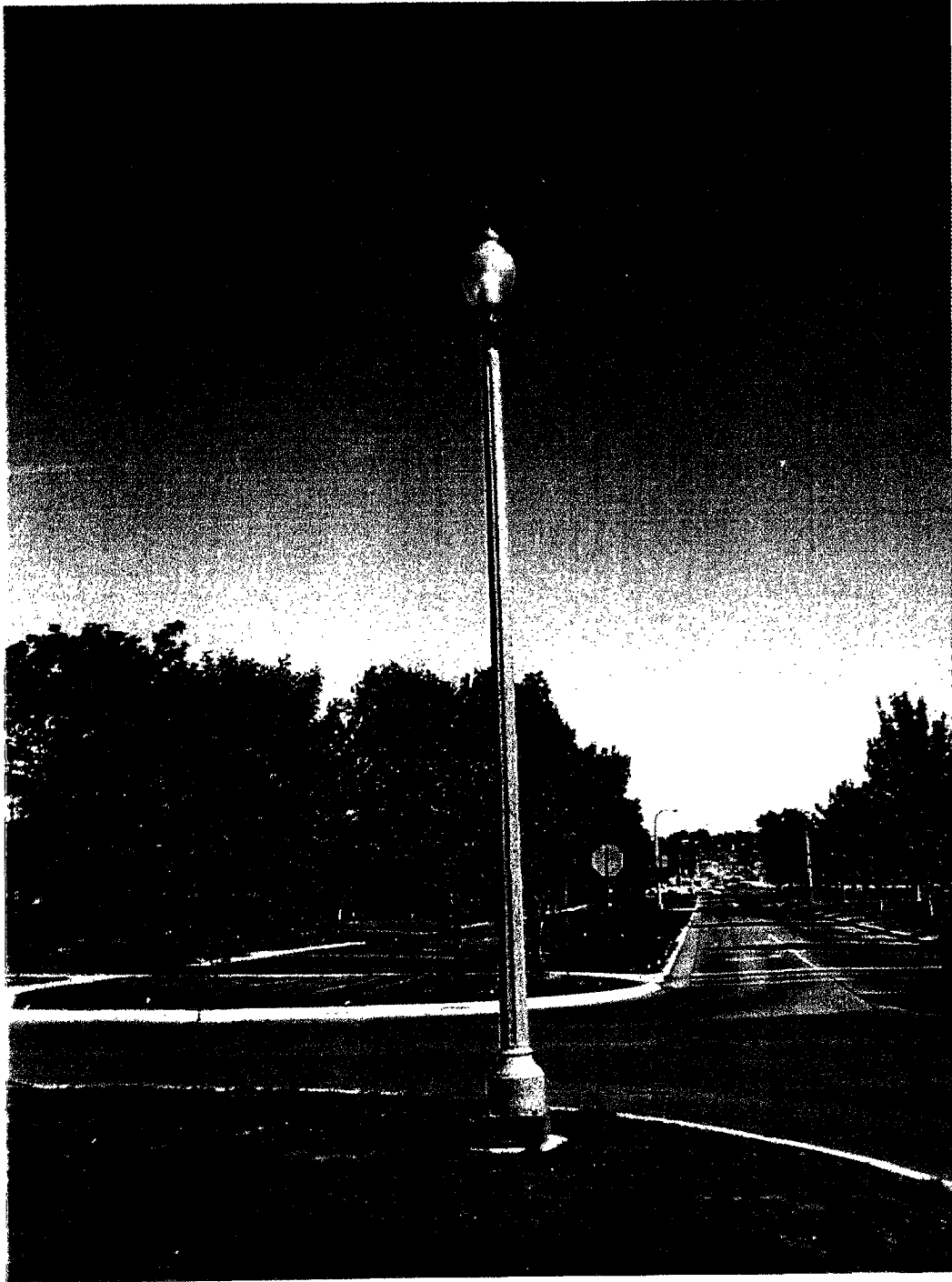
7ST

1S9

5ST

KANSAS CITY ST





RECEIVED

SEP 19 2006

Rapid City Growth
Management Department

DOWNTOWN BANNER POLES RAPID CITY, SOUTH DAKOTA

LATE
SUBMITTAL

DRAFT

SHEET INDEX	
10	GENERAL NOTES & SPECIFICATIONS
11	GENERAL NOTES & SPECIFICATIONS
12	POLE LOCATION PLAN - DOWNTOWN BANNER POLES
13	POLE LOCATION PLAN - DOWNTOWN BANNER POLES

DOWNTOWN BANNER POLES
RAPID CITY, SOUTH DAKOTA
DATE: 09/19/06
DRAWN BY: MRS

NO.	DATE	REVISION
1	09/19/06	

2006-094 COVER SHEET

Albertson Engineering Inc.
2040 W. Main
Rapid City, South Dakota 57702
605.343.9806



2040 West Main
Rapid City, South Dakota 57702
605.343.9806
Albertson Engineering Inc.

RECEIVED

SEP 19 2006
Rapid City Growth
Management Department

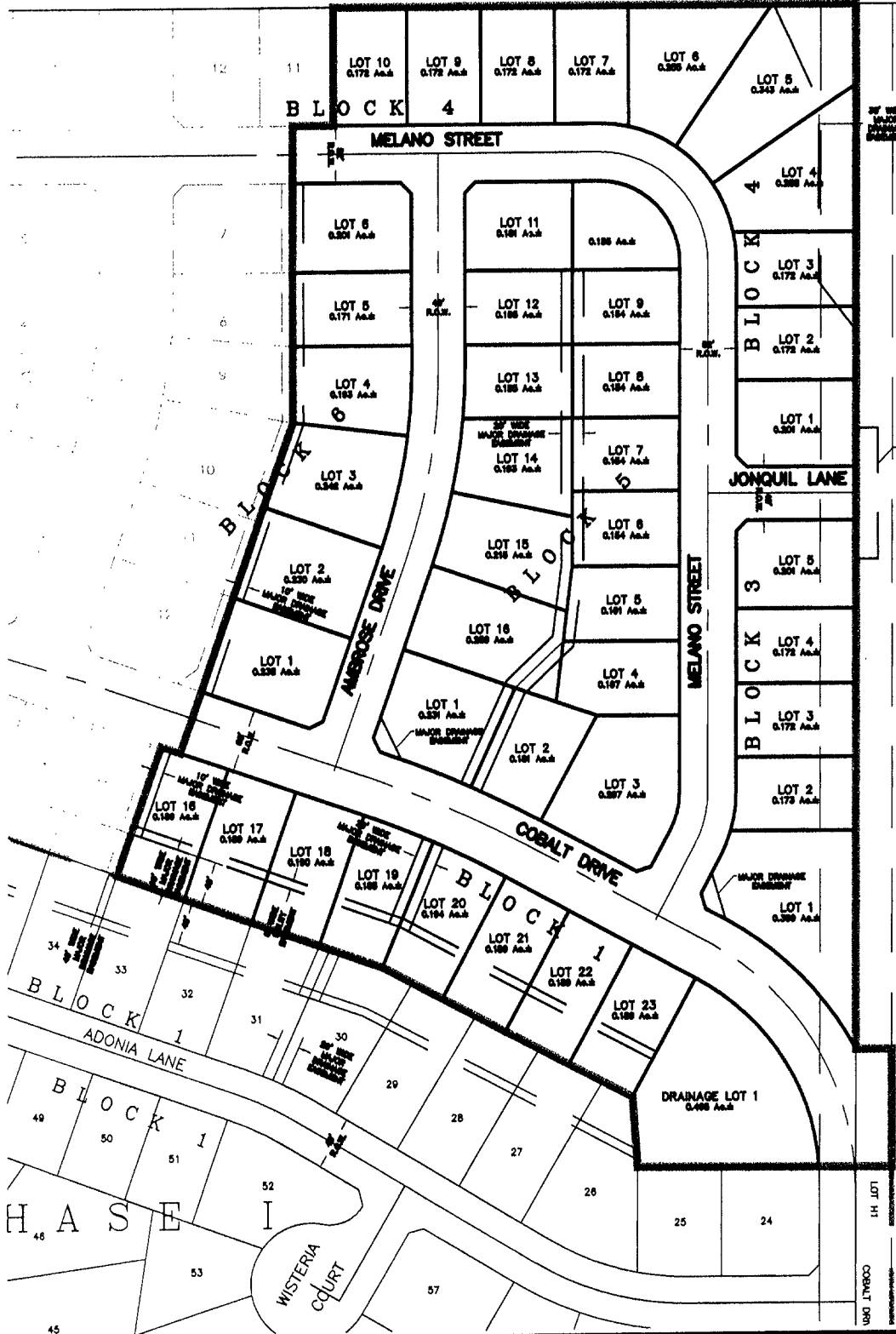
SITE PLAN

LOTS 16-23 BLOCK 1, LOTS 1-5 BLOCK 3, LOTS 1-10 BLOCK 4, LOTS 1-16 BLOCK 5, LOTS 1-6 BLOCK 6, AND DRAINAGE LOT 1 BROOKFIELD SUBDIVISION

LOCATED IN THE NE 1/4 SE 1/4 OF SECTION 13 T2N, R7E, BHM RAPID CITY, PENNINGTON COUNTY, SOUTH DAKOTA

SW 1/4 NE 1/4

SECTION 13
SECTION 18



NOT TO SCALE
SEPTEMBER 13, 2006

SLETTEN ADD.

TRACT 5

TR/

RECEIVED

SEP 18 2006

Rapid City Growth
Management Department

C:\DRAWINGS\3003\PHASE 2\PLAN-3003-PHASE2.dwg, 8x11 (5), 9/15/2006 9:39:33 AM