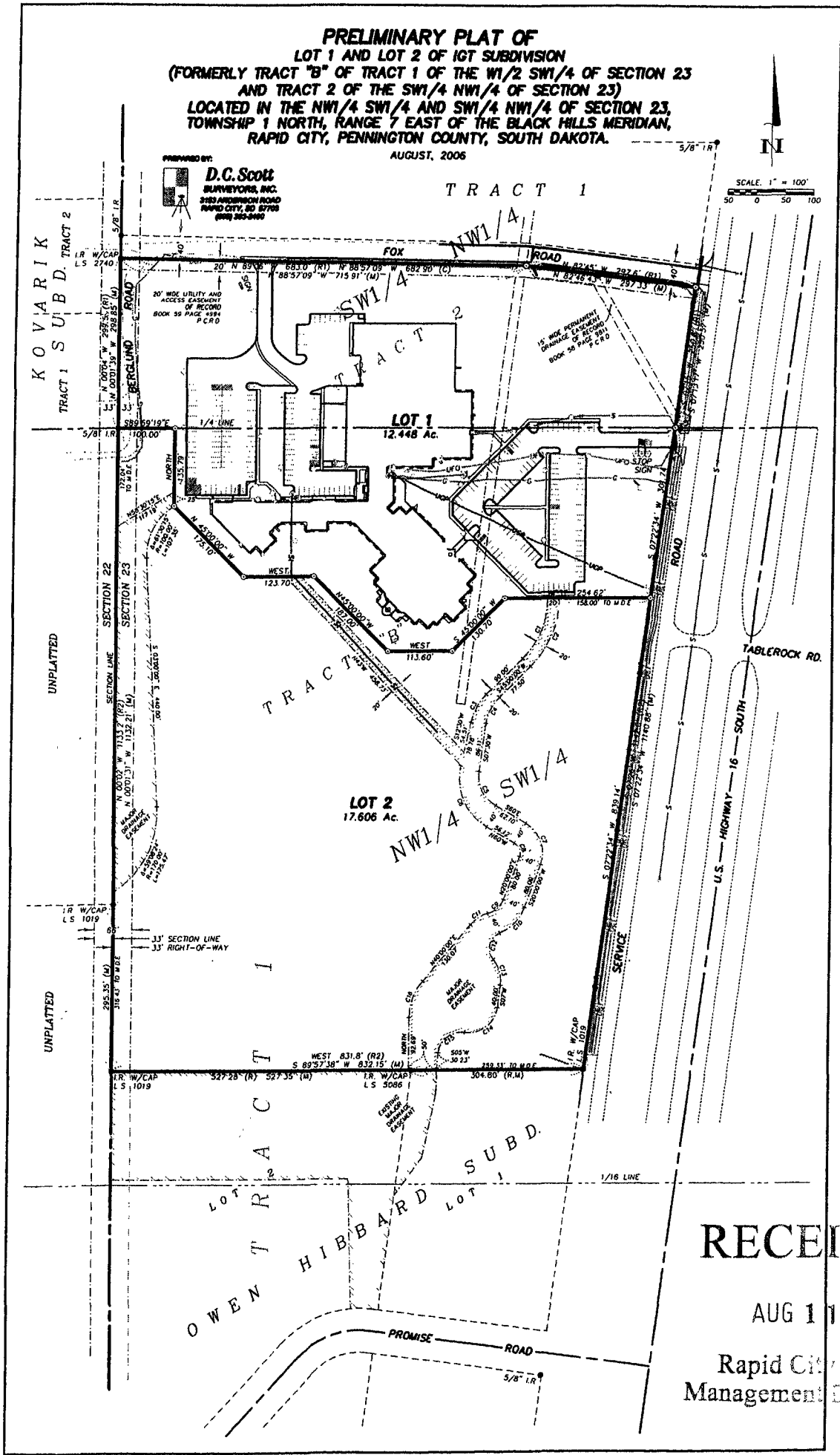


**PRELIMINARY PLAT OF
 LOT 1 AND LOT 2 OF IGT SUBDIVISION
 (FORMERLY TRACT "B" OF TRACT 1 OF THE W1/2 SW1/4 OF SECTION 23
 AND TRACT 2 OF THE SW1/4 NW1/4 OF SECTION 23)
 LOCATED IN THE NW1/4 SW1/4 AND SW1/4 NW1/4 OF SECTION 23,
 TOWNSHIP 1 NORTH, RANGE 7 EAST OF THE BLACK HILLS MERIDIAN,
 RAPID CITY, PENNINGTON COUNTY, SOUTH DAKOTA.**

AUGUST, 2006

PREPARED BY:
D.C. Scott
 SURVEYORS, INC.
 9183 ANDERSON ROAD
 RAPID CITY, SD 57108
 (605) 262-2400

SCALE: 1" = 100'
 50 0 50 100



RECEIVED
 AUG 11 2006
 Rapid City Growth
 Management Department