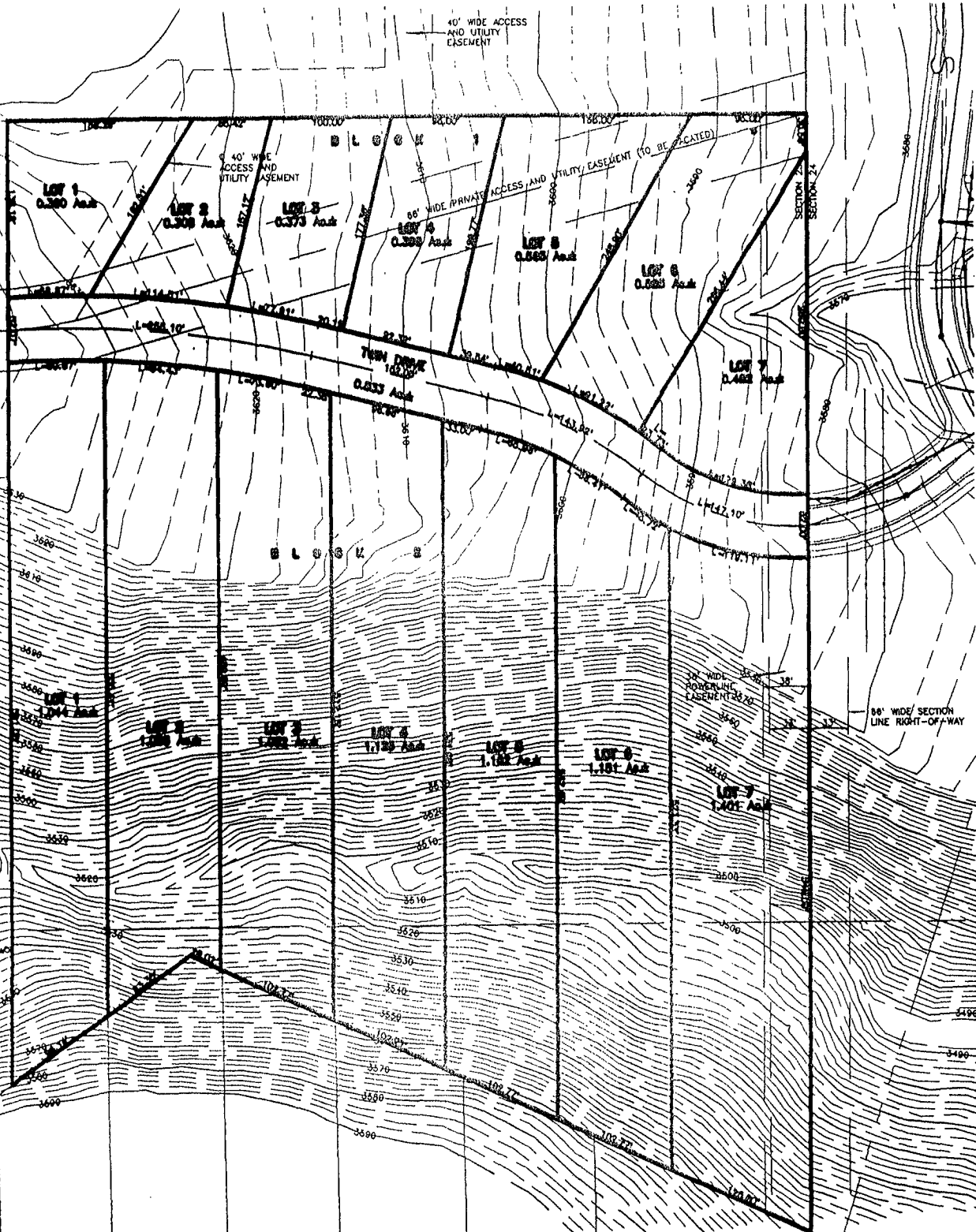


# LOTS 1 THROUGH 7 OF BLOCK 1, AND LOTS 1 THROUGH 7 OF BLOCK 2, MEDICINE RIDGE SUBDIVISION

LOCATED IN THE NE<sup>1</sup>/<sub>4</sub> OF THE NE<sup>1</sup>/<sub>4</sub> AND IN THE SE<sup>1</sup>/<sub>4</sub> OF THE NE<sup>1</sup>/<sub>4</sub>  
SECTION 23, T1N, R7E, BHM,  
RAPID CITY, PENNINGTON COUNTY, SOUTH DAKOTA



AUGUST 25, 2006  
N.T.S.