

Plat of Elk Meadows Subdivision - including
 Lots 1 thru 5 of Block 2,
 Lots 1 thru 10 of Block 3,
 Lots 1 thru 4 of Block 3,
 Lots 1 and 26 of Block 6,
 Lot 1 of Block 7,
 Lots 1 and 36 thru 41 of Block 8,
 Lots 1 thru 11 of Block 9,
 Lots 1 thru 13 of Block 10,
 Lots 1 thru 30 of Block 11 and
 Lot A and Lots 1 thru 23 of Block 12,
 and Dedicated Right-of-Way

06SV039



0 100 200

All major drainage easements shown herein shall be kept free of all obstructions including but not limited to buildings walls, fences, hedges, trees & shrubs. These easements grant to all public authorities the right to construct, operate, maintain, inspect and repair such improvements and structures as it deems expedient to facilitate drainage from any source

NOTE: The rear lot lines in Block 10 and portions of Block 11 represent the centerline of a 40' wide Major Drainage Easement (aka Cyclone Ditch). The side lot line annotations are to the Witness Corners located at the edge of the easement

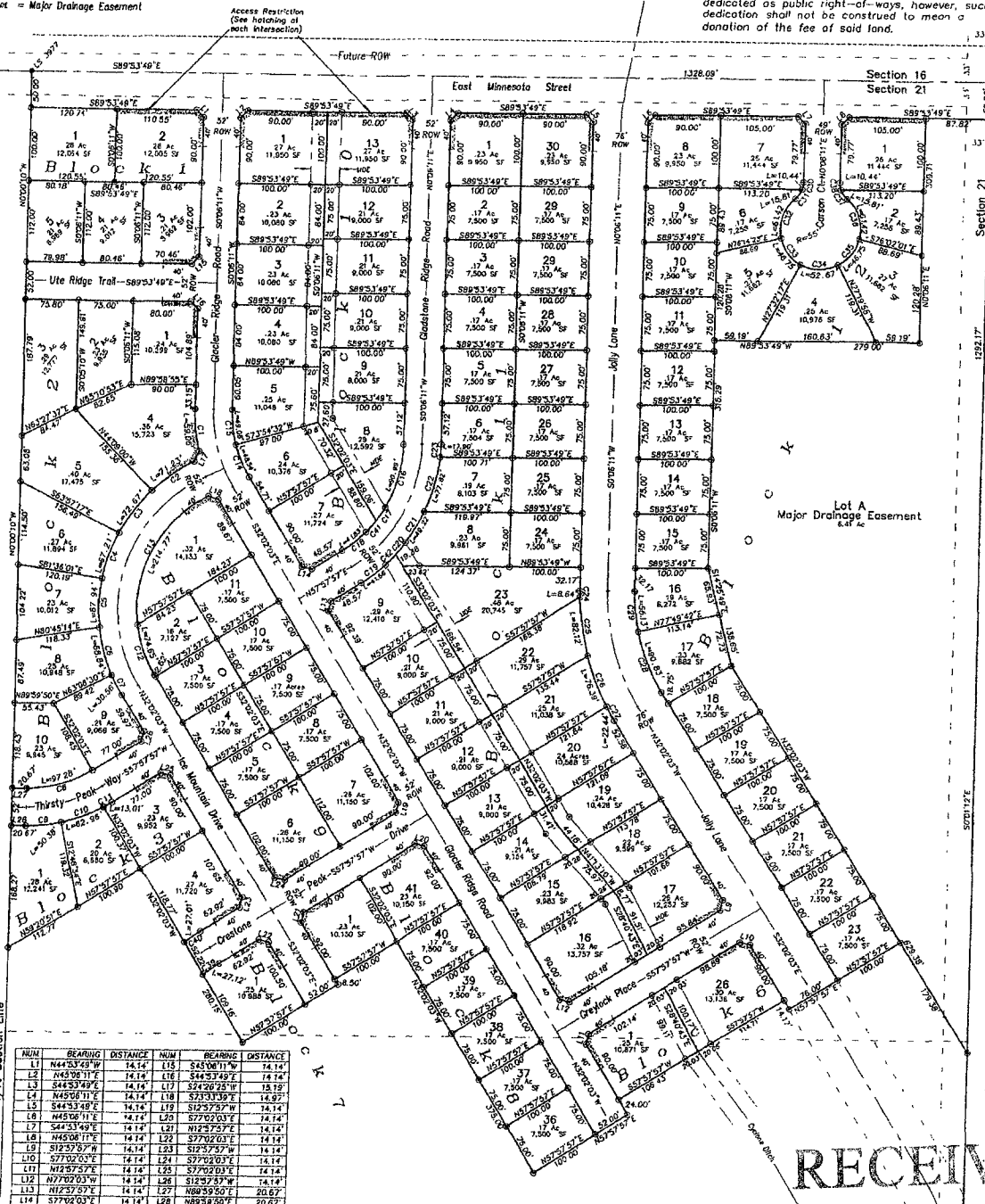
1" = 100'
 June 7, 2006
 Basis of Bearings
 Assumed from Previous Surveys
 and confirmed by
 Solar Observation

located in the E1/2 NE1/4 of Section 21
 T1N, R8E, BHM, Rapid City, Pennington County, South Dakota
 Prepared by:
 Fisk Land Surveying & Consulting Engineers, Inc.
 P.O. Box 8184
 Rapid City, SD 57709
 (605) 348-1638
 Project # 06-08-07

9' Utility and Minor Drainage Easements on the interior side of all lot lines

- Legend**
- = Found Survey Monument as noted
 - = Found Cross Cap (BLM - 1949)
 - ⊙ = Set Rebar/Cop "RW FISK LS 6565"
 - = Major Drainage Easement

East Minnesota Street (51/2), Glacier Ridge Road, Gladstone Ridge Road, Jolly Lane, Carson Court, Ice Mountain Drive, Ute Ridge Trail, Thirsty Peck Crestone Peck Drive and Greylock Place, containing 9.09 Acres more or less, as shown hereon are hereby dedicated as public right-of-ways, however, such dedication shall not be construed to mean a donation of the fee of said land.



NUM	BEARING	DISTANCE	NUM	BEARING	DISTANCE
L1	N44°53'29"W	14.14	L15	S45°06'11"E	14.14
L2	N49°08'31"E	14.14	L16	S44°53'48"E	14.14
L3	S44°53'49"E	14.14	L17	S74°20'25"W	12.19
L4	N45°58'11"E	14.14	L18	S73°33'39"E	14.14
L5	S44°53'48"E	14.14	L19	S12°25'29"W	14.14
L6	N45°08'11"E	14.14	L20	S77°02'03"E	14.14
L7	S44°53'49"E	14.14	L21	N12°25'29"E	14.14
L8	N45°08'11"E	14.14	L22	S77°02'03"E	14.14
L9	S12°25'29"W	14.14	L23	S12°25'29"W	14.14
L10	S77°02'03"E	14.14	L24	S77°02'03"E	14.14
L11	N45°58'11"E	14.14	L25	S77°02'03"E	14.14
L12	N47°02'03"E	14.14	L26	S12°25'29"W	14.14
L13	N12°25'29"E	14.14	L27	N80°58'50"E	20.67
L14	S77°02'03"E	14.14	L28	N89°58'50"E	20.67

RECEIVED