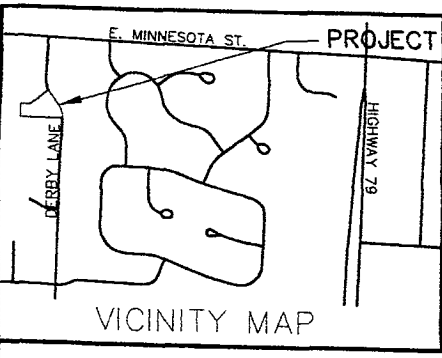


S:\Land Projects\2006\06137\06137.DWG (L:\V\B\T\OPTION B.DWG) SHEET 8/11/2006 8:40:14 AM

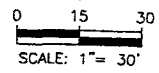


PROJECT LOCATION

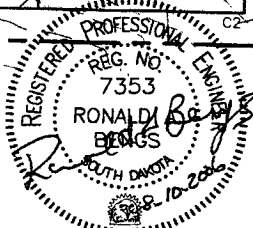
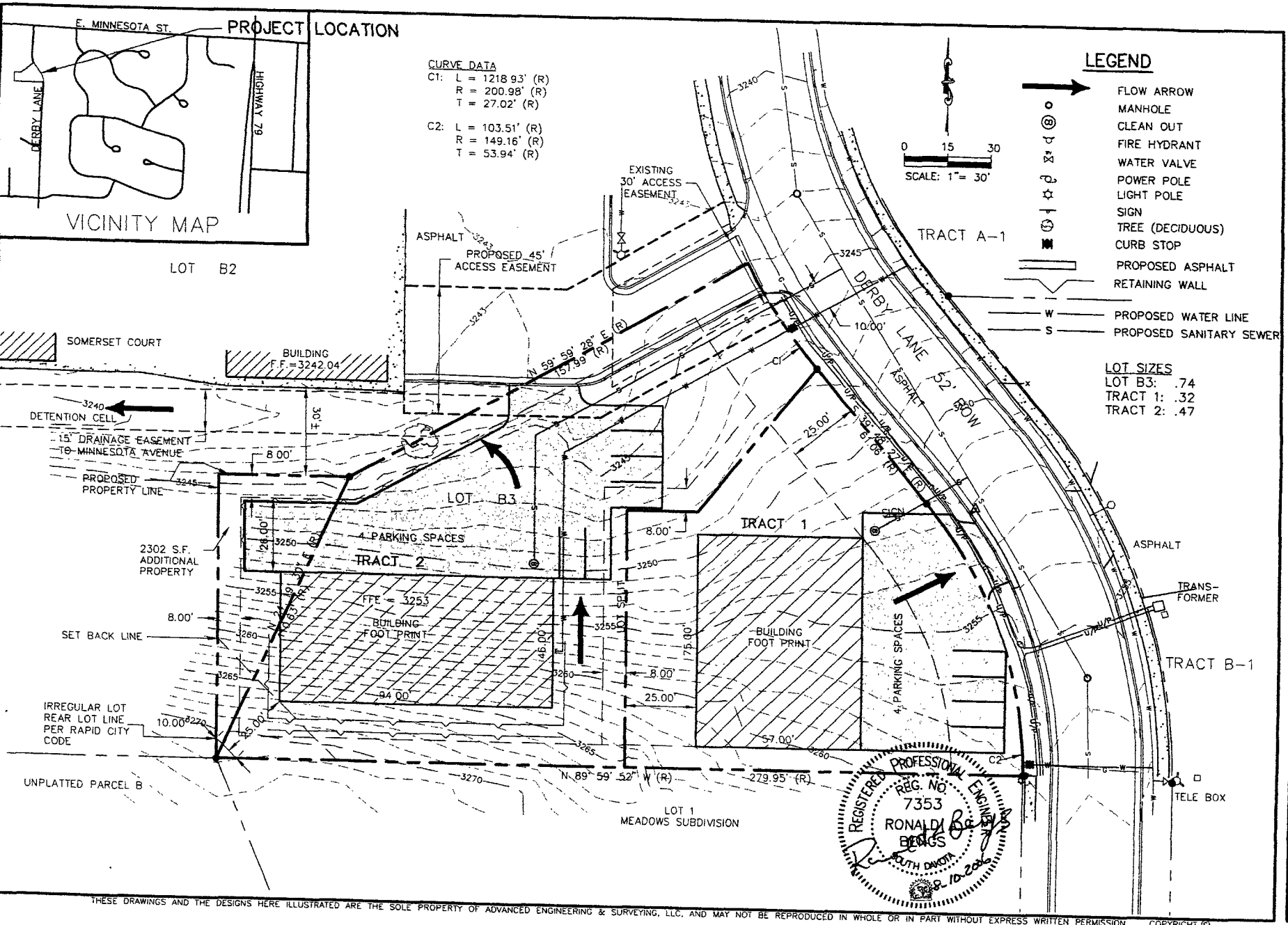
CURVE DATA
 C1: L = 1218.93' (R)
 R = 200.98' (R)
 T = 27.02' (R)
 C2: L = 103.51' (R)
 R = 149.16' (R)
 T = 53.94' (R)

LEGEND

- FLOW ARROW
- MANHOLE
- CLEAN OUT
- ⊕ FIRE HYDRANT
- ⊕ WATER VALVE
- ⊕ POWER POLE
- ⊕ LIGHT POLE
- ⊕ SIGN
- ⊕ TREE (DECIDUOUS)
- ▬ CURB STOP
- ▬ PROPOSED ASPHALT
- ▬ RETAINING WALL
- W PROPOSED WATER LINE
- S PROPOSED SANITARY SEWER



LOT SIZES
 LOT B3: .74
 TRACT 1: .32
 TRACT 2: .47



SITE LAYOUT
LAYOUT PLAN
LOT B3
 RAPID CITY, PENNINGTON COUNTY, SOUTH DAKOTA

ADVANCED ENGINEERING & SURVEYING, LLC
 100 WEST MAIN STREET
 RAPID CITY, SOUTH DAKOTA 57701
 PHONE: 605-718-8825 FAX: 605-718-8837
 EMAIL: adam@engringsurveys.com

DESIGNER	RAB
DRAFTER	KLM
CHECKED	RAB
DATE	8/10/06

REVISIONS:	
DATE	
DATE	
DATE	
JOB NO	06-037

SHEET #
 1
 OF
 1