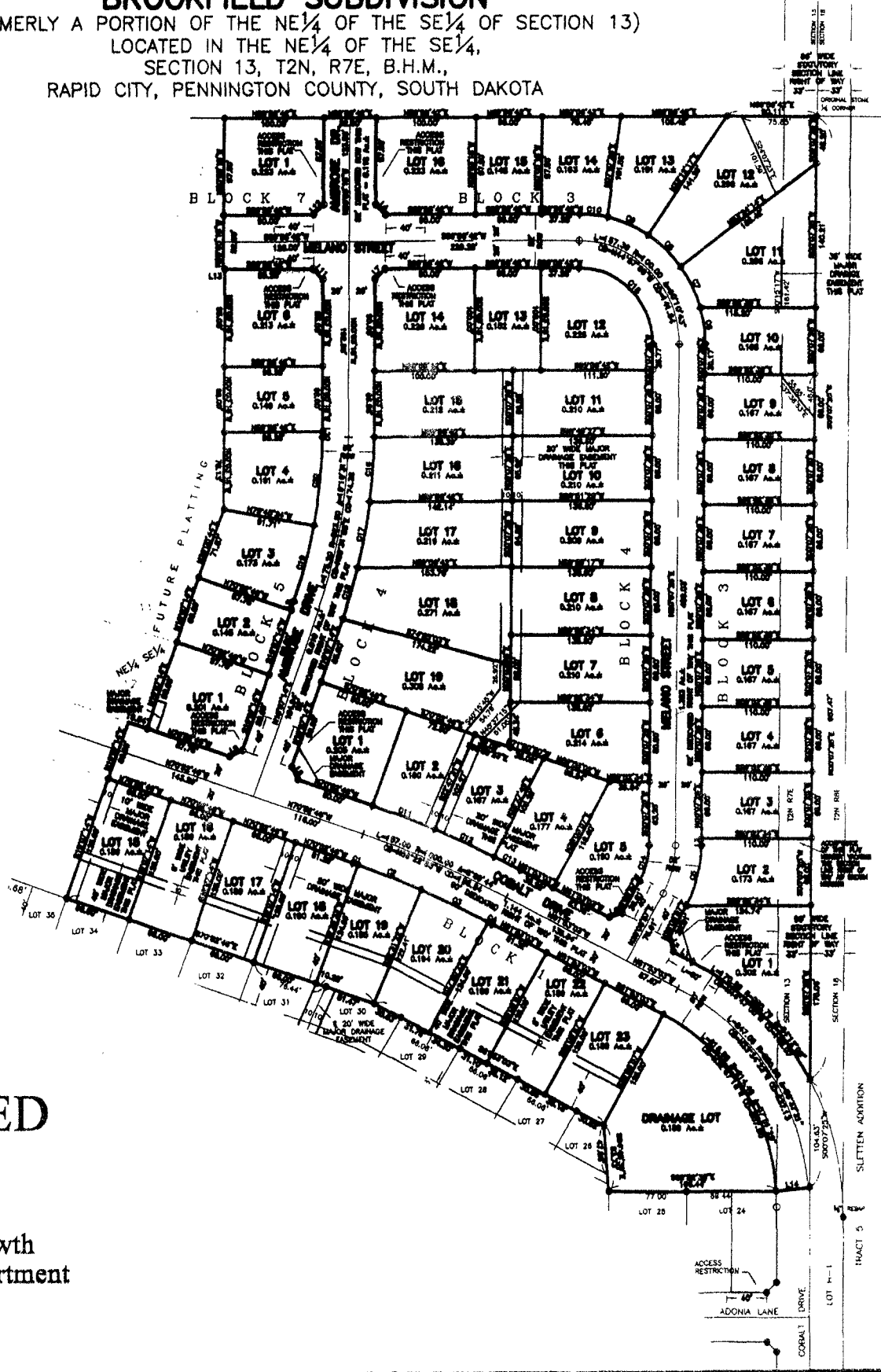


PLAT OF
LOTS 15 THROUGH 23 OF BLOCK 1, LOTS 1 THROUGH 16 OF BLOCK 3,
LOTS 1 THROUGH 19 OF BLOCK 4, LOTS 1 THROUGH 6 OF BLOCK 5,
LOT 1 OF BLOCK 7, AND DRAINAGE LOT 1,
BROOKFIELD SUBDIVISION

(FORMERLY A PORTION OF THE NE 1/4 OF THE SE 1/4 OF SECTION 13)
LOCATED IN THE NE 1/4 OF THE SE 1/4,
SECTION 13, T2N, R7E, B.H.M.,
RAPID CITY, PENNINGTON COUNTY, SOUTH DAKOTA



NO SCALE
AUGUST 11, 2006



RECEIVED

AUG 11 2006

Rapid City Growth
Management Department