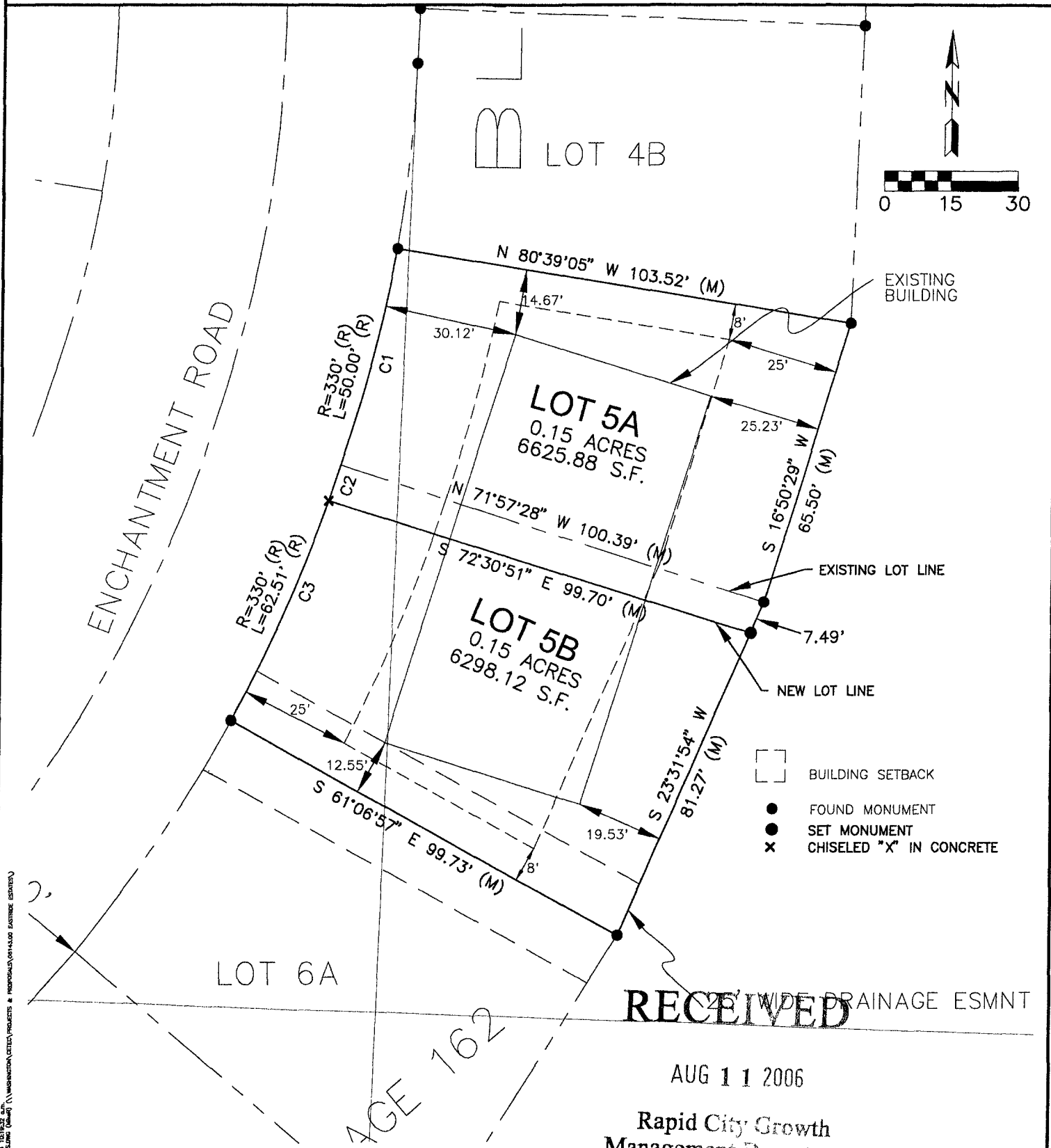


EXHIBIT A

LOTS 5A AND 5B OF THE EASTRIDGE ESTATES SUBDIVISION
IN THE W1/2NE1/4 AND E1/2 NW1/4 SECTION 7, T1N, R7E, B.H.M.
RAPID CITY, PENNINGTON COUNTY, S.D.



RECEIVED

AUG 11 2006

Rapid City Growth
Management Department



August 11, 2006 10:16:32 AM
Drawing: 06PD060 (Sheet 1) (Pennington, Cetec Projects & Engineering/06PD060 EASTRIDGE ESTATES)